

Product datasheet

Anti-ETS2 antibody [EPR22419] - BSA and Azide free ab243290

Recombinant RabMAb

[7 Images](#)

Overview

Product name	Anti-ETS2 antibody [EPR22419] - BSA and Azide free
Description	Rabbit monoclonal [EPR22419] to ETS2 - BSA and Azide free
Host species	Rabbit
Specificity	This antibody is not recommended for human in IHC.
Tested applications	Suitable for: WB, IHC-P, ICC/IF, IP Unsuitable for: Flow Cyt
Species reactivity	Reacts with: Mouse, Rat, Human
Immunogen	Recombinant fragment. This information is proprietary to Abcam and/or its suppliers.
Positive control	IHC-P: Mouse and rat thymus tissue. ICC/IF: LPS treated RAW 264.7 cells. IP: ETS2 IP in K562 whole cell lysate.
General notes	<p>ab243290 is the carrier-free version of ab219948.</p> <p>Our carrier-free antibodies are typically supplied in a PBS-only formulation, purified and free of BSA, sodium azide and glycerol. The carrier-free buffer and high concentration allow for increased conjugation efficiency.</p> <p>This conjugation-ready format is designed for use with fluorochromes, metal isotopes, oligonucleotides, and enzymes, which makes them ideal for antibody labelling, functional and cell-based assays, flow-based assays (e.g. mass cytometry) and Multiplex Imaging applications.</p> <p>Use our conjugation kits for antibody conjugates that are ready-to-use in as little as 20 minutes with <1 minute hands-on-time and 100% antibody recovery: available for fluorescent dyes, HRP, biotin and gold.</p> <p>This product is compatible with the Maxpar[®] Antibody Labeling Kit from Fluidigm, without the need for antibody preparation. Maxpar[®] is a trademark of Fluidigm Canada Inc.</p> <p>This product is a recombinant monoclonal antibody, which offers several advantages including:</p> <ul style="list-style-type: none">- High batch-to-batch consistency and reproducibility- Improved sensitivity and specificity- Long-term security of supply- Animal-free production <p>For more information see here.</p>

Our RabMAb[®] technology is a patented hybridoma-based technology for making rabbit monoclonal antibodies. For details on our patents, please refer to [RabMAb[®] patents](#).

Properties

Form	Liquid
Storage instructions	Shipped at 4°C. Store at +4°C. Do Not Freeze.
Storage buffer	pH: 7.2 Constituent: PBS
Carrier free	Yes
Purity	Protein A purified
Clonality	Monoclonal
Clone number	EPR22419
Isotype	IgG

Applications

The Abpromise guarantee Our [Abpromise guarantee](#) covers the use of ab243290 in the following tested applications. The application notes include recommended starting dilutions; optimal dilutions/concentrations should be determined by the end user.

Application	Abreviews	Notes
WB		Use at an assay dependent concentration. Predicted molecular weight: 53 kDa.
IHC-P		Use at an assay dependent concentration. Perform heat mediated antigen retrieval with Tris/EDTA buffer pH 9.0 before commencing with IHC staining protocol.
ICC/IF		Use at an assay dependent concentration.
IP		Use at an assay dependent concentration.

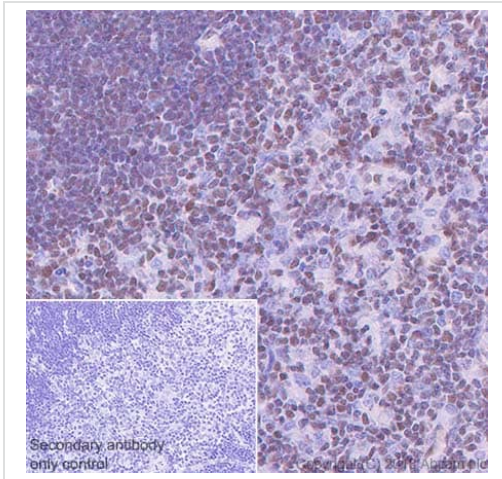
Application notes Is unsuitable for Flow Cyt.

Target

Sequence similarities Belongs to the ETS family.
Contains 1 ETS DNA-binding domain.
Contains 1 PNT (pointed) domain.

Cellular localization Nucleus.

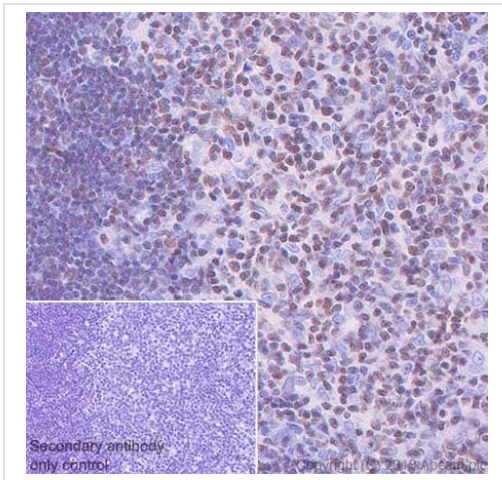
Images



Immunohistochemistry (Formalin/PFA-fixed paraffin-embedded sections) - Anti-ETS2 antibody [EPR22419] - BSA and Azide free (ab243290)

Immunohistochemical analysis of paraffin-embedded mouse thymus tissue labeling ETS2 with **ab219948** at 1/500 dilution, followed by a ready to use Goat Anti-Rabbit IgG H&L (HRP). Nuclear staining on mouse thymus (PMID: 3472202, PMID:26926107) is observed. Counterstained with hematoxylin. Secondary antibody only control: Used PBS instead of primary antibody, secondary antibody is a ready to use Goat Anti-Rabbit IgG H&L (HRP). Perform heat mediated antigen retrieval using **ab93684** (Tris/EDTA buffer, pH 9.0).

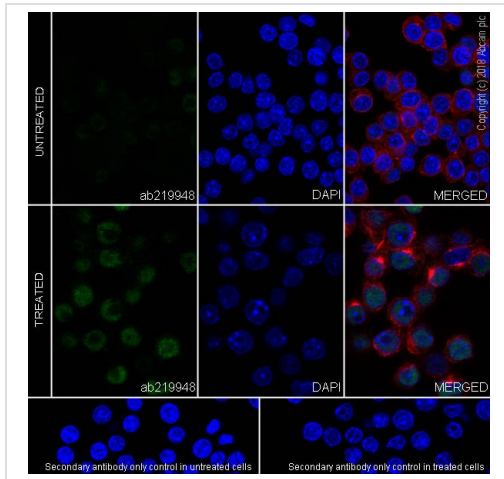
This data was developed using the same antibody clone in a different buffer formulation containing PBS, BSA, glycerol, and sodium azide (**ab219948**).



Immunohistochemistry (Formalin/PFA-fixed paraffin-embedded sections) - Anti-ETS2 antibody [EPR22419] - BSA and Azide free (ab243290)

Immunohistochemical analysis of paraffin-embedded rat thymus tissue labeling ETS2 with **ab219948** at 1/500 dilution, followed by a ready to use Goat Anti-Rabbit IgG H&L (HRP). Nuclear staining on rat thymus (PMID: 3472202, PMID:26926107) is observed. Counterstained with hematoxylin. Secondary antibody only control: Used PBS instead of primary antibody, secondary antibody is a ready to use Goat Anti-Rabbit IgG H&L (HRP). Perform heat mediated antigen retrieval using **ab93684** (Tris/EDTA buffer, pH 9.0).

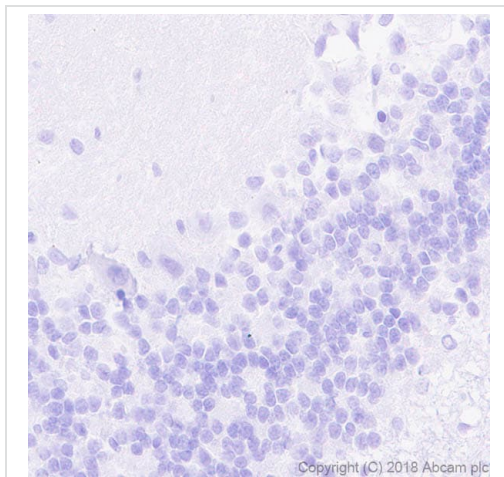
This data was developed using the same antibody clone in a different buffer formulation containing PBS, BSA, glycerol, and sodium azide (**ab219948**).



Immunocytochemistry/ Immunofluorescence - Anti-ETS2 antibody [EPR22419] - BSA and Azide free (ab243290)

Immunofluorescent analysis of 4% paraformaldehyde-fixed, 0.1% Triton X-100 permeabilized RAW 264.7 (mouse macrophage cell line transformed with Abelson murine leukemia virus) cells labeling ETS2 with [ab219948](#) at 1/500 dilution, followed by Goat Anti-Rabbit IgG H&L (Alexa Fluor[®] 488) ([ab150077](#)) secondary antibody at 1/1000 dilution (green). Confocal image showing nuclear staining in RAW 264.7 cells treated with lipopolysaccharide (500 ng/ml) for 6 hours. The nuclear counterstain is DAPI (blue). Counterstained with [ab195889](#) Anti-alpha Tubulin antibody [DM1A] - Microtubule Marker (Alexa Fluor[®] 594) at a 1/200 dilution (red). Secondary antibody control: Used PBS instead of primary antibody, followed by Goat Anti-Rabbit IgG H&L (Alexa Fluor[®] 488) ([ab150077](#)) secondary antibody at 1/1000 dilution.

This data was developed using the same antibody clone in a different buffer formulation containing PBS, BSA, glycerol, and sodium azide ([ab219948](#)).



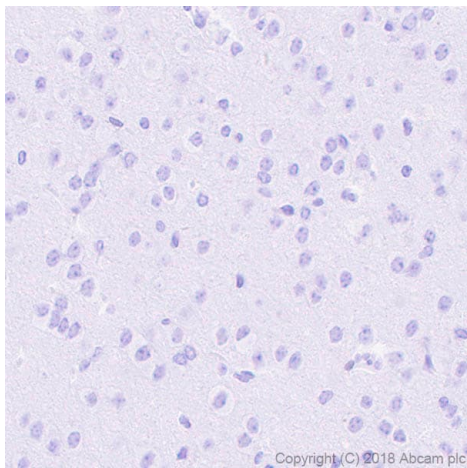
Immunohistochemistry (Formalin/PFA-fixed paraffin-embedded sections) - Anti-ETS2 antibody [EPR22419] - BSA and Azide free (ab243290)

Immunohistochemical analysis of paraffin-embedded rat cerebellum tissue labeling ETS2 with [ab219948](#) at 1/500 dilution, followed by a ready to use Goat Anti-Rabbit IgG H&L (HRP).

Negative control: No staining on rat cerebellum (PMID: 3472202) is observed. Counterstained with hematoxylin.

Perform heat mediated antigen retrieval using [ab93684](#) (Tris/EDTA buffer, pH 9.0).

This data was developed using the same antibody clone in a different buffer formulation containing PBS, BSA, glycerol, and sodium azide ([ab219948](#)).



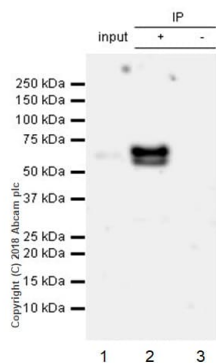
Immunohistochemistry (Formalin/PFA-fixed paraffin-embedded sections) - Anti-ETS2 antibody [EPR22419] - BSA and Azide free (ab243290)

Immunohistochemical analysis of paraffin-embedded mouse cerebrum tissue labeling ETS2 with **ab219948** at 1/500 dilution, followed by a ready to use Goat Anti-Rabbit IgG H&L (HRP).

Negative control: No staining on mouse cerebrum (PMID: 3472202) is observed. Counterstained with hematoxylin.

Perform heat mediated antigen retrieval using **ab93684** (Tris/EDTA buffer, pH 9.0).

This data was developed using the same antibody clone in a different buffer formulation containing PBS, BSA, glycerol, and sodium azide (**ab219948**).



Immunoprecipitation - Anti-ETS2 antibody [EPR22419] - BSA and Azide free (ab243290)

ETS2 was immunoprecipitated from 0.35 mg K562 (human chronic myelogenous leukemia cell line from bone marrow) whole cell lysate with **ab219948** at 1/30 dilution. Western blot was performed from the immunoprecipitate using **ab219948** at 1/1000 dilution. VeriBlot for IP Detection Reagent (HRP) (**ab131366**), was used for detection at 1/5000 dilution.

Lane 1: K562 whole cell lysate 10 µg (Input).

Lane 2: **ab219948** IP in K562 whole cell lysate.

Lane 3: Rabbit monoclonal IgG (**ab172730**) instead of **ab219948** in K562 whole cell lysate.





Blocking/Dilution buffer: 5% NFDm/TBST.

Exposure time: 3 minutes.

The two immunoprecipitated bands represent non-phosphorylated and phosphorylated ETS2.

This data was developed using the same antibody clone in a different buffer formulation containing PBS, BSA, glycerol, and sodium azide (**ab219948**).

Why choose a recombinant antibody?

 Research with confidence Consistent and reproducible results	 Long-term and scalable supply Recombinant technology
 Success from the first experiment Confirmed specificity	 Ethical standards compliant Animal-free production

Anti-ETS2 antibody [EPR22419] - BSA and Azide free (ab243290)

Please note: All products are "FOR RESEARCH USE ONLY. NOT FOR USE IN DIAGNOSTIC PROCEDURES"

Our Abpromise to you: Quality guaranteed and expert technical support

- Replacement or refund for products not performing as stated on the datasheet
- Valid for 12 months from date of delivery
- Response to your inquiry within 24 hours
- We provide support in Chinese, English, French, German, Japanese and Spanish
- Extensive multi-media technical resources to help you
- We investigate all quality concerns to ensure our products perform to the highest standards

If the product does not perform as described on this datasheet, we will offer a refund or replacement. For full details of the Abpromise, please visit <https://www.abcam.com/abpromise> or contact our technical team.

Terms and conditions

- Guarantee only valid for products bought direct from Abcam or one of our authorized distributors