


Product datasheet

Anti-ETV3 antibody [EPR8658] ab154810

Recombinant RabMAb

3 Images

Overview

Product name	Anti-ETV3 antibody [EPR8658]
Description	Rabbit monoclonal [EPR8658] to ETV3
Host species	Rabbit
Tested applications	Suitable for: Flow Cyt (Intra), WB Unsuitable for: ICC/IF, IHC-P or IP
Species reactivity	Reacts with: Human Predicted to work with: Mouse, Rat 
Immunogen	Synthetic peptide within Human ETV3. The exact sequence is proprietary.
Positive control	HepG2, HeLa, SH-SY5Y and U937 cell lysates; Hela cells.
General notes	<p>This product is a recombinant monoclonal antibody, which offers several advantages including:</p> <ul style="list-style-type: none"> - High batch-to-batch consistency and reproducibility - Improved sensitivity and specificity - Long-term security of supply - Animal-free production <p>For more information see here.</p> <p>Our RabMAb[®] technology is a patented hybridoma-based technology for making rabbit monoclonal antibodies. For details on our patents, please refer to RabMAb[®] patents.</p>

Properties

Form	Liquid
Storage instructions	Shipped at 4°C. Store at -20°C.
Storage buffer	pH: 7.2 Preservative: 0.01% Sodium azide Constituents: 9% PBS, 40% Glycerol (glycerin, glycerine), 0.05% BSA, 50% Tissue culture supernatant
Purity	Tissue culture supernatant
Clonality	Monoclonal
Clone number	EPR8658

Isotype IgG

Applications

The Abpromise guarantee Our **Abpromise guarantee** covers the use of ab154810 in the following tested applications. The application notes include recommended starting dilutions; optimal dilutions/concentrations should be determined by the end user.

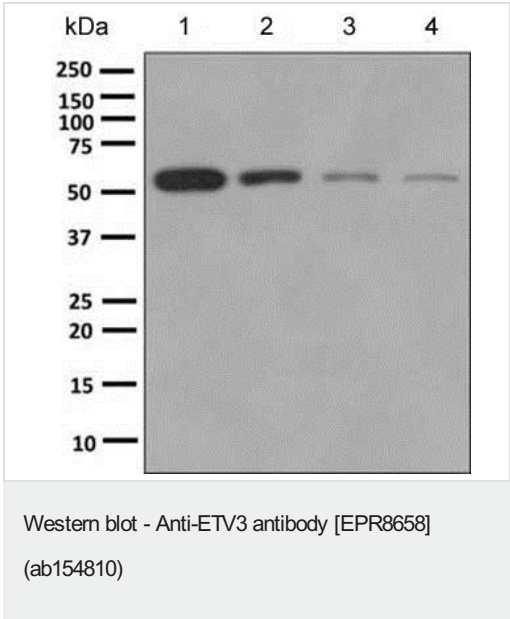
Application	Abreviews	Notes
Flow Cyt (Intra)		1/10 - 1/100. ab172730 - Rabbit monoclonal IgG, is suitable for use as an isotype control with this antibody.
WB		1/10000 - 1/50000. Predicted molecular weight: 57 kDa.

Application notes Is unsuitable for ICC/IF ,IHC-P or IP.

Target

Function	Transcriptional repressor that contribute to growth arrest during terminal macrophage differentiation by repressing target genes involved in Ras-dependent proliferation. Represses MMP1 promoter activity.
Sequence similarities	Belongs to the ETS family. Contains 1 ETS DNA-binding domain.
Cellular localization	Nucleus.

Images

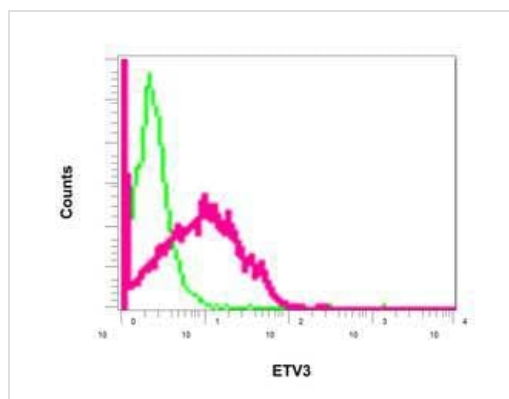


All lanes : Anti-ETV3 antibody [EPR8658] (ab154810) at 1/10000 dilution

- Lane 1 :** HepG2 lysate
- Lane 2 :** HeLa lysate
- Lane 3 :** SHSY5Y lysate
- Lane 4 :** U937 lysate

Lysates/proteins at 10 µg per lane.





Predicted band size: 57 kDa



Intracellular flow cytometric analysis of permeabilized Hela cells labeling ETV3 with ab154810 at 1/10 dilution (red) or a negative rabbit IgG (control) (green).

Flow Cytometry (Intracellular) - Anti-ETV3 antibody
[EPR8658] (ab154810)

Why choose a recombinant antibody?

 <p>Research with confidence Consistent and reproducible results</p>	 <p>Long-term and scalable supply Recombinant technology</p>
 <p>Success from the first experiment Confirmed specificity</p>	 <p>Ethical standards compliant Animal-free production</p>

Anti-ETV3 antibody [EPR8658] (ab154810)

Please note: All products are "FOR RESEARCH USE ONLY. NOT FOR USE IN DIAGNOSTIC PROCEDURES"

Our Abpromise to you: Quality guaranteed and expert technical support

- Replacement or refund for products not performing as stated on the datasheet
- Valid for 12 months from date of delivery
- Response to your inquiry within 24 hours
- We provide support in Chinese, English, French, German, Japanese and Spanish
- Extensive multi-media technical resources to help you
- We investigate all quality concerns to ensure our products perform to the highest standards

If the product does not perform as described on this datasheet, we will offer a refund or replacement. For full details of the Abpromise, please visit <https://www.abcam.com/abpromise> or contact our technical team.

Terms and conditions

- Guarantee only valid for products bought direct from Abcam or one of our authorized distributors