



Anti-Exfoliative Toxin A/ETA antibody ab225679

1 Image

Overview

Product name	Anti-Exfoliative Toxin A/ETA antibody
Description	Rabbit polyclonal to Exfoliative Toxin A/ETA
Host species	Rabbit
Tested applications	Suitable for: WB
Species reactivity	Reacts with: Staphylococcus aureus
Immunogen	Recombinant full length protein corresponding to Staphylococcus aureus Exfoliative Toxin A/ETA aa 1 to the C-terminus. Database link: P09331
	<div>  Run BLAST with </div> <div>  Run BLAST with </div>
Positive control	WB: Recombinant Staphylococcus aureus Exfoliative toxin A/ETA protein.
General notes	<p>The Life Science industry has been in the grips of a reproducibility crisis for a number of years. Abcam is leading the way in addressing this with our range of recombinant monoclonal antibodies and knockout edited cell lines for gold-standard validation. Please check that this product meets your needs before purchasing.</p> <p>If you have any questions, special requirements or concerns, please send us an inquiry and/or contact our Support team ahead of purchase. Recommended alternatives for this product can be found below, along with publications, customer reviews and Q&As</p>

Properties

Form	Liquid
Storage instructions	Shipped at 4°C. Store at +4°C short term (1-2 weeks). Upon delivery aliquot. Store at -20°C long term. Avoid freeze / thaw cycle.
Storage buffer	pH: 7.40 Preservative: 0.03% Proclin 300 Constituents: 50% Glycerol (glycerin, glycerine), PBS
Purity	Protein G purified
Purification notes	Purity >95%.
Clonality	Polyclonal
Isotype	IgG

Applications

The Abpromise guarantee

Our **Abpromise guarantee** covers the use of ab225679 in the following tested applications.

The application notes include recommended starting dilutions; optimal dilutions/concentrations should be determined by the end user.

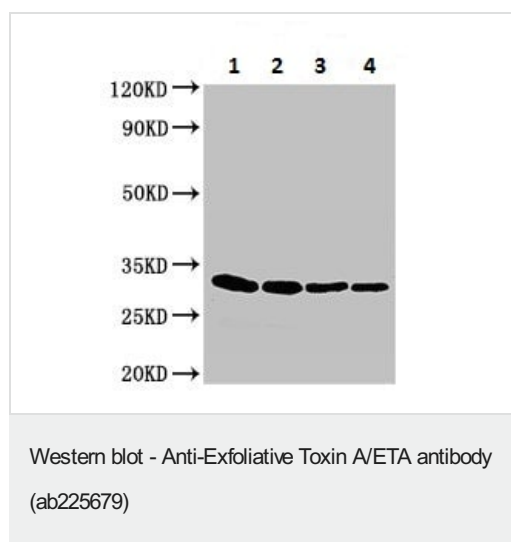
Application	Abreviews	Notes
WB		1/500 - 1/5000. Detects a band of approximately 32 kDa (predicted molecular weight: 31 kDa).

Target

Relevance

Staphylococcus aureus Exfoliative Toxin A (ETA) has serine protease-like properties and binds to the skin protein profilaggrin. It cleaves substrates after acidic residues. Exfoliative toxins cause impetigous diseases commonly referred as staphylococcal scalded skin syndrome (SSSS).

Images



All lanes : Anti-Exfoliative Toxin A/ETA antibody (ab225679) at 1/500 dilution

Lane 1 : Recombinant Staphylococcus aureus Exfoliative toxin A/ETA protein at 0.2 µg

Lane 2 : Recombinant Staphylococcus aureus Exfoliative toxin A/ETA protein at 0.1 µg

Lane 3 : Recombinant Staphylococcus aureus Exfoliative toxin A/ETA protein at 0.05 µg

Lane 4 : Recombinant Staphylococcus aureus Exfoliative toxin A/ETA protein at 0.025 µg

Secondary

All lanes : Goat polyclonal to rabbit IgG at 1/50000 dilution

Predicted band size: 31 kDa

Observed band size: 32 kDa

Please note: All products are "FOR RESEARCH USE ONLY. NOT FOR USE IN DIAGNOSTIC PROCEDURES"

Our Abpromise to you: Quality guaranteed and expert technical support

- Replacement or refund for products not performing as stated on the datasheet
- Valid for 12 months from date of delivery
- Response to your inquiry within 24 hours

- We provide support in Chinese, English, French, German, Japanese and Spanish
- Extensive multi-media technical resources to help you
- We investigate all quality concerns to ensure our products perform to the highest standards

If the product does not perform as described on this datasheet, we will offer a refund or replacement. For full details of the Abpromise, please visit <https://www.abcam.com/abpromise> or contact our technical team.

Terms and conditions

- Guarantee only valid for products bought direct from Abcam or one of our authorized distributors