

## Product datasheet

# Anti-Exportin 4/XPO4 antibody [EPR4442(2)] - BSA and Azide free ab248416

Recombinant **RabMAb**

[2 Images](#)

### Overview

|                            |   |
|----------------------------|---|
| <b>Product name</b>        | Anti-Exportin 4/XPO4 antibody [EPR4442(2)] - BSA and Azide free   |
| <b>Description</b>         | Rabbit monoclonal [EPR4442(2)] to Exportin 4/XPO4 - BSA and Azide free  |
| <b>Host species</b>        | Rabbit  |
| <b>Tested applications</b> | <b>Suitable for:</b> WB<br><b>Unsuitable for:</b> Flow Cyt, ICC/IF or IHC-P   |
| <b>Species reactivity</b>  | <b>Reacts with:</b> Mouse, Rat, Human   |
| <b>Immunogen</b>           | Synthetic peptide. This information is proprietary to Abcam and/or its suppliers.   |
| <b>General notes</b>       | <p>ab248416 is the carrier-free version of <a href="#">ab133237</a>.</p> <p>Our <b>carrier-free</b> antibodies are typically supplied in a PBS-only formulation, purified and free of BSA, sodium azide and glycerol. The carrier-free buffer and high concentration allow for increased conjugation efficiency.</p> <p>This conjugation-ready format is designed for use with fluorochromes, metal isotopes, oligonucleotides, and enzymes, which makes them ideal for antibody labelling, functional and cell-based assays, flow-based assays (e.g. mass cytometry) and Multiplex Imaging applications.</p> <p>Use our <b>conjugation kits</b> for antibody conjugates that are ready-to-use in as little as 20 minutes with &lt;1 minute hands-on-time and 100% antibody recovery: available for fluorescent dyes, HRP, biotin and gold.</p> <p>This product is compatible with the Maxpar<sup>®</sup> Antibody Labeling Kit from Fluidigm, without the need for antibody preparation. Maxpar<sup>®</sup> is a trademark of Fluidigm Canada Inc.</p> |

### Properties

|                             |   |
|-----------------------------|---|
| <b>Form</b>                 | Liquid  |
| <b>Storage instructions</b> | Shipped at 4°C. Store at +4°C. Do Not Freeze. |
| <b>Storage buffer</b>       | pH: 7.2<br>Constituent: PBS                   |
| <b>Carrier free</b>         | Yes   |

|                     |                    |
|---------------------|--------------------|
| <b>Purity</b>       | Protein A purified |
| <b>Clonality</b>    | Monoclonal         |
| <b>Clone number</b> | EPR4442(2)         |
| <b>Isotype</b>      | IgG                |

## Applications

**The Abpromise guarantee** Our **Abpromise guarantee** covers the use of ab248416 in the following tested applications. The application notes include recommended starting dilutions; optimal dilutions/concentrations should be determined by the end user.

| Application | Abreviews | Notes   |
|-------------|-----------|---|
| <b>WB</b>   |           | Use at an assay dependent concentration. Predicted molecular weight: 127 kDa. |

**Application notes** Is unsuitable for Flow Cyt, ICC/IF or IHC-P.

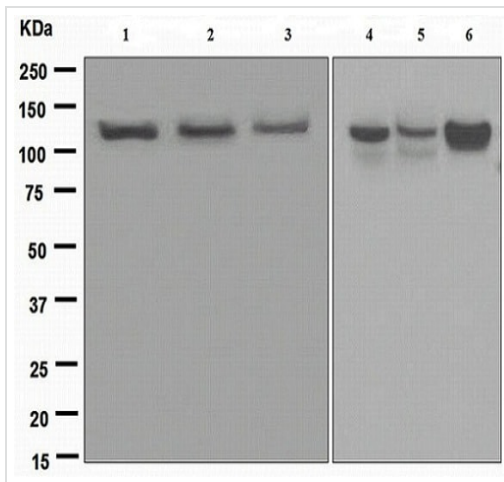
## Target

**Function** Mediates the nuclear export of proteins (cargos) with broad substrate specificity. In the nucleus binds cooperatively to its cargo and to the GTPase Ran in its active GTP-bound form. Docking of this trimeric complex to the nuclear pore complex (NPC) is mediated through binding to nucleoporins. Upon transit of a nuclear export complex into the cytoplasm, disassembling of the complex and hydrolysis of Ran-GTP to Ran-GDP (induced by RANBP1 and RANGAP1, respectively) cause release of the cargo from the export receptor. XPO4 then return to the nuclear compartment and mediate another round of transport. The directionality of nuclear export is thought to be conferred by an asymmetric distribution of the GTP- and GDP-bound forms of Ran between the cytoplasm and nucleus.

**Sequence similarities** Belongs to the exportin family.

**Cellular localization** Cytoplasm. Nucleus. Shuttles between the nucleus and the cytoplasm.

## Images



Western blot - Anti-Exportin 4/XPO4 antibody [EPR4442(2)] - BSA and Azide free (ab248416)

**All lanes :** Anti-Exportin 4/XPO4 antibody [EPR4442(2)] ([ab133237](#)) at 1/1000 dilution

**Lane 1 :** Jurkat cell lysates

**Lane 2 :** HeLa cell lysates

**Lane 3 :** SW480 cell lysates

**Lane 4 :** C6 cell lysates

**Lane 5 :** Raw264.7 cell lysates

**Lane 6 :** PC12 cell lysates

Lysates/proteins at 10 µg per lane.

**Secondary**

**All lanes :** HRP labelled goat anti-rabbit at 1/2000 dilution

**Predicted band size:** 127 kDa

This data was developed using [ab133237](#), the same antibody clone in a different buffer formulation.

Why choose a recombinant antibody?

|   |   |
|---|---|
| <br><b>Research with confidence</b><br>Consistent and reproducible results | <br><b>Long-term and scalable supply</b><br>Recombinant technology |
| <br><b>Success from the first experiment</b><br>Confirmed specificity      | <br><b>Ethical standards compliant</b><br>Animal-free production   |

Anti-Exportin 4/XPO4 antibody [EPR4442(2)] - BSA and Azide free (ab248416)

**Please note:** All products are "FOR RESEARCH USE ONLY. NOT FOR USE IN DIAGNOSTIC PROCEDURES"

**Our Abpromise to you: Quality guaranteed and expert technical support**

- Replacement or refund for products not performing as stated on the datasheet

- Valid for 12 months from date of delivery
- Response to your inquiry within 24 hours
  
- We provide support in Chinese, English, French, German, Japanese and Spanish
- Extensive multi-media technical resources to help you
- We investigate all quality concerns to ensure our products perform to the highest standards

If the product does not perform as described on this datasheet, we will offer a refund or replacement. For full details of the Abpromise, please visit <https://www.abcam.com/abpromise> or contact our technical team.

### **Terms and conditions**

---

- Guarantee only valid for products bought direct from Abcam or one of our authorized distributors