

## Product datasheet

### Anti-FABP4 antibody ab66682

★★★★★ [1 Abreviews](#) [18 References](#) [2 Images](#)

#### Overview

<b>Product name</b>	Anti-FABP4 antibody
<b>Description</b>	Rabbit polyclonal to FABP4
<b>Host species</b>	Rabbit
<b>Tested applications</b>	<b>Suitable for:</b> WB
<b>Species reactivity</b>	<b>Reacts with:</b> Mouse, Rat, Human
<b>Immunogen</b>	Synthetic peptide corresponding to Human FABP4 aa 100 to the C-terminus (C terminal) conjugated to keyhole limpet haemocyanin. (Peptide available as <a href="#">ab66681</a> )

#### General notes

The Life Science industry has been in the grips of a reproducibility crisis for a number of years. Abcam is leading the way in addressing this with our range of recombinant monoclonal antibodies and knockout edited cell lines for gold-standard validation. Please check that this product meets your needs before purchasing.

If you have any questions, special requirements or concerns, please send us an inquiry and/or contact our Support team ahead of purchase. Recommended alternatives for this product can be found below, along with publications, customer reviews and Q&As

#### Properties

<b>Form</b>	Liquid
<b>Storage instructions</b>	Shipped at 4°C. Store at +4°C short term (1-2 weeks). Upon delivery aliquot. Store at -20°C or -80°C. Avoid freeze / thaw cycle.
<b>Storage buffer</b>	pH: 7.40 Preservative: 0.02% Sodium azide Constituent: PBS

Batches of this product that have a concentration < 1mg/ml may have BSA added as a stabilising agent. If you would like information about the formulation of a specific lot, please contact our scientific support team who will be happy to help.

<b>Purity</b>	Immunogen affinity purified
<b>Clonality</b>	Polyclonal
<b>Isotype</b>	IgG

## Applications

### The Abpromise guarantee

Our **Abpromise guarantee** covers the use of ab66682 in the following tested applications.

The application notes include recommended starting dilutions; optimal dilutions/concentrations should be determined by the end user.

Application	Abreviews	Notes
WB		Use a concentration of 1 µg/ml. Detects a band of approximately 15 kDa (predicted molecular weight: 15 kDa).

## Target

### Function

Lipid transport protein in adipocytes. Binds both long chain fatty acids and retinoic acid. Delivers long-chain fatty acids and retinoic acid to their cognate receptors in the nucleus.

### Sequence similarities

Belongs to the calycin superfamily. Fatty-acid binding protein (FABP) family.

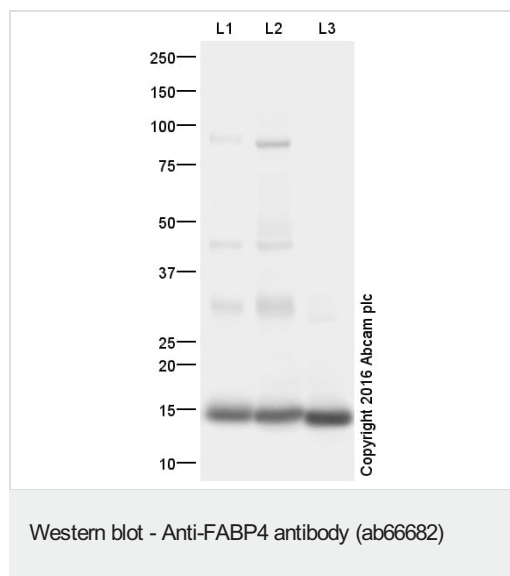
### Domain

Forms a beta-barrel structure that accommodates hydrophobic ligands in its interior.

### Cellular localization

Cytoplasm. Nucleus. Depending on the nature of the ligand, a conformation change exposes a nuclear localization motif and the protein is transported into the nucleus. Subject to constitutive nuclear export.

## Images



**All lanes** : Anti-FABP4 antibody (ab66682) at 1 µg/ml

**Lane 1** : Human adipose normal tissue lysate - total protein

(**ab28980**)

**Lane 2** : P7 Mouse Adipose Tissue Lysate

**Lane 3** : Adult Rat Brown Adipose Tissue Lysate (**ab48639**)

Lysates/proteins at 10 µg per lane.

### Secondary

**All lanes** : Goat polyclonal to Rabbit IgG - H&L - Pre-Adsorbed (HRP) at 1/50000 dilution

Developed using the ECL technique.

Performed under reducing conditions.

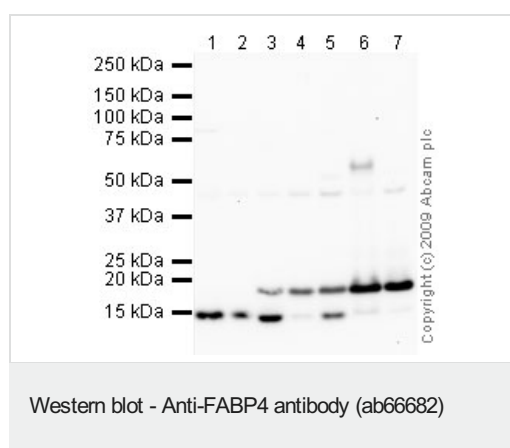
**Predicted band size:** 15 kDa

**Observed band size:** 15 kDa

**Additional bands at:** 30 kDa, 44 kDa, 85 kDa. We are unsure as to the identity of these extra bands.

**Exposure time:** 10 seconds

This blot was produced using a 4-12% Bis-tris gel under the MES buffer system. The gel was run at 200V for 35 minutes before being transferred onto a Nitrocellulose membrane at 30V for 70 minutes. The membrane was then blocked for an hour using 2% Bovine Serum Albumin before being incubated with ab66682 overnight at 4°C. Antibody binding was detected using an anti-rabbit antibody conjugated to HRP, and visualised using ECL development solution **ab133406**.



**All lanes :** Anti-FABP4 antibody (ab66682) at 1 µg/ml

**Lane 1 :** Mouse skeletal muscle tissue lysate - total protein (**ab29711**)

**Lane 2 :** Mouse thymus tissue lysate - total protein (**ab29285**)

**Lane 3 :** Rat Ovary Tissue Lysate

**Lane 4 :** Rat Colon Tissue Lysate

**Lane 5 :** Rat Thymus Tissue Lysate

**Lane 6 :** HepG2 (Human hepatocellular liver carcinoma cell line) Whole Cell Lysate

**Lane 7 :** HeLa (Human epithelial carcinoma cell line) Whole Cell Lysate

Lysates/proteins at 10 µg per lane.

### Secondary

**All lanes :** Goat polyclonal to Rabbit IgG - H&L - Pre-Adsorbed (HRP) at 1/3000 dilution

Performed under reducing conditions.

**Predicted band size:** 15 kDa

**Observed band size:** 15 kDa

**Additional bands at:** 18 kDa (possible post-translational modification)

**Please note:** All products are "FOR RESEARCH USE ONLY. NOT FOR USE IN DIAGNOSTIC PROCEDURES"

### **Our Abpromise to you: Quality guaranteed and expert technical support**

---

- Replacement or refund for products not performing as stated on the datasheet
- Valid for 12 months from date of delivery
- Response to your inquiry within 24 hours
  
- We provide support in Chinese, English, French, German, Japanese and Spanish
- Extensive multi-media technical resources to help you
- We investigate all quality concerns to ensure our products perform to the highest standards

If the product does not perform as described on this datasheet, we will offer a refund or replacement. For full details of the Abpromise, please visit <https://www.abcam.com/abpromise> or contact our technical team.

### **Terms and conditions**

---

- Guarantee only valid for products bought direct from Abcam or one of our authorized distributors