

Product datasheet

Anti-Factor D/CFD antibody [EPR17004-240] ab213177

Recombinant RabMAb

3 Images

Overview

Product name	Anti-Factor D/CFD antibody [EPR17004-240]
Description	Rabbit monoclonal [EPR17004-240] to Factor D/CFD
Host species	Rabbit
Specificity	This antibody detects a distinct epitope compared to ab181307 .
Tested applications	Suitable for: WB
Species reactivity	Reacts with: Mouse
Immunogen	Recombinant full length protein. This information is proprietary to Abcam and/or its suppliers.
Positive control	WB: His-tagged mouse Factor D/CFD (aa26-259) recombinant protein; Mouse plasma and serum; Mouse lung lysate.
General notes	<p>This product is a recombinant monoclonal antibody, which offers several advantages including:</p> <ul style="list-style-type: none">- High batch-to-batch consistency and reproducibility- Improved sensitivity and specificity- Long-term security of supply- Animal-free production <p>For more information see here.</p> <p>Our RabMAb[®] technology is a patented hybridoma-based technology for making rabbit monoclonal antibodies. For details on our patents, please refer to RabMAb[®] patents.</p>

Properties

Form	Liquid
Storage instructions	Shipped at 4°C. Store at +4°C short term (1-2 weeks). Upon delivery aliquot. Store at -20°C. Avoid freeze / thaw cycle.
Storage buffer	pH: 7.2 Preservative: 0.01% Sodium azide Constituents: PBS, 40% Glycerol (glycerin, glycerine), 0.05% BSA
Purity	Protein A purified
Clonality	Monoclonal
Clone number	EPR17004-240

Isotype

IgG

Applications

The Abpromise guarantee

Our **Abpromise guarantee** covers the use of ab213177 in the following tested applications.

The application notes include recommended starting dilutions; optimal dilutions/concentrations should be determined by the end user.

Application	Abreviews	Notes
WB		1/1000. Detects a band of approximately 45-50 kDa (predicted molecular weight: 28 kDa).

Target

Function

Factor D cleaves factor B when the latter is complexed with factor C3b, activating the C3bbb complex, which then becomes the C3 convertase of the alternate pathway. Its function is homologous to that of C1s in the classical pathway.

Involvement in disease

Defects in CFD are the cause of complement factor D deficiency (CFD deficiency) [MIM:134350]. CFD deficiency predisposes to invasive meningococcal disease.

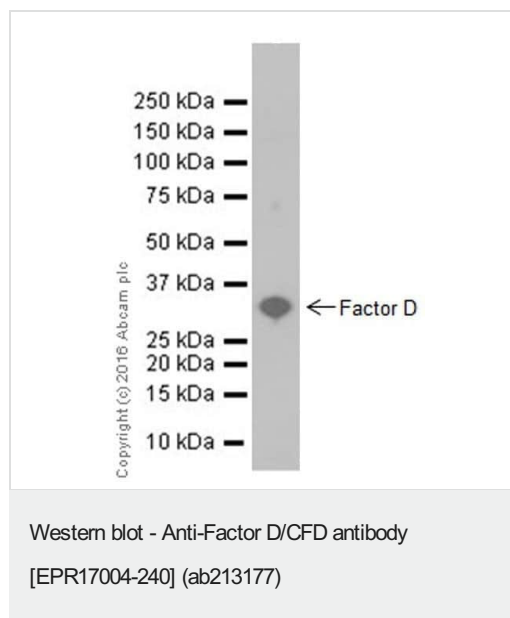
Sequence similarities

Belongs to the peptidase S1 family.
Contains 1 peptidase S1 domain.

Cellular localization

Secreted.

Images



Anti-Factor D/CFD antibody [EPR17004-240] (ab213177) at 1/5000 dilution + His-tagged Mouse Factor D/CFD (aa26-259) recombinant protein at 0.01 µg

Secondary

Goat Anti-Rabbit IgG H&L (HRP) ([ab97051](#)) at 1/20000 dilution

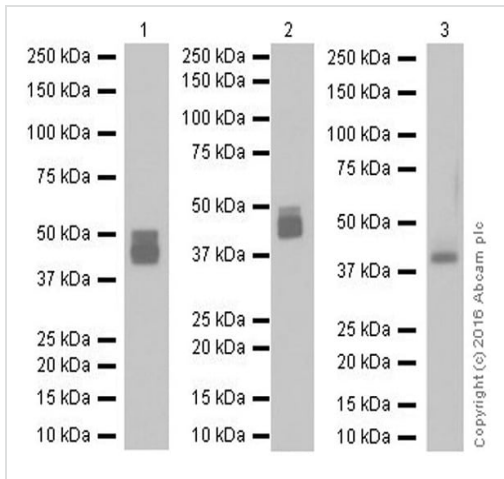
Developed using the ECL technique.

Predicted band size: 28 kDa

Observed band size: 29 kDa

Exposure time: 30 seconds

Blocking/Dilution buffer: 5% NFDm/TBST.



Western blot - Anti-Factor D/CFD antibody [EPR17004-240] (ab213177)

All lanes : Anti-Factor D/CFD antibody [EPR17004-240] (ab213177) at 1/1000 dilution

Lane 1 : Mouse plasma

Lane 2 : Mouse serum

Lane 3 : Mouse lung lysate

Lysates/proteins at 10 µg per lane.

Secondary

All lanes : Goat Anti-Rabbit IgG H&L (HRP) (**ab97051**) at 1/100000 dilution

Developed using the ECL technique.

Predicted band size: 28 kDa

Observed band size: 45-50 kDa

Exposure : Lane 1/2: 1 second; Lane 3: 15 seconds.

Blocking/Dilution buffer: 5% NFDm/TBST.

The higher molecular mass corresponds to the glycosylated protein.

The expression profile observed is consistent with what has been described in the literature (PMID: 20038603; PMID: 12949072).

Why choose a recombinant antibody?

Research with confidence
Consistent and reproducible results

Long-term and scalable supply
Recombinant technology

Success from the first experiment
Confirmed specificity

Ethical standards compliant
Animal-free production

Anti-Factor D/CFD antibody [EPR17004-240] (ab213177)

Our Abpromise to you: Quality guaranteed and expert technical support

- Replacement or refund for products not performing as stated on the datasheet
- Valid for 12 months from date of delivery
- Response to your inquiry within 24 hours

- We provide support in Chinese, English, French, German, Japanese and Spanish
- Extensive multi-media technical resources to help you
- We investigate all quality concerns to ensure our products perform to the highest standards

If the product does not perform as described on this datasheet, we will offer a refund or replacement. For full details of the Abpromise, please visit <https://www.abcam.com/abpromise> or contact our technical team.

Terms and conditions

- Guarantee only valid for products bought direct from Abcam or one of our authorized distributors