




## Product datasheet

# Anti-Factor I/CFI antibody ab232743

3 Images

### Overview

---

<b>Product name</b>	Anti-Factor I/CFI antibody
<b>Description</b>	Rabbit polyclonal to Factor I/CFI
<b>Host species</b>	Rabbit
<b>Tested applications</b>	<b>Suitable for:</b> IHC-P, WB
<b>Species reactivity</b>	<b>Reacts with:</b> Human, Pig <b>Predicted to work with:</b> Orangutan 
<b>Immunogen</b>	Recombinant fragment corresponding to Human Factor I/CFI aa 1-250. (N-terminal His-tag and GST-tags; Expressed in E.coli). Database link: <a href="#">P05156</a>  <a href="#">Run BLAST with</a>  <a href="#">Run BLAST with</a>
<b>Positive control</b>	WB: Pig kidney lysate; Recombinant human Factor I/CFI protein. IHC-P: Human kidney tissue.
<b>General notes</b>	<p>The Life Science industry has been in the grips of a reproducibility crisis for a number of years. Abcam is leading the way in addressing this with our range of recombinant monoclonal antibodies and knockout edited cell lines for gold-standard validation. Please check that this product meets your needs before purchasing.</p> <p>If you have any questions, special requirements or concerns, please send us an inquiry and/or contact our Support team ahead of purchase. Recommended alternatives for this product can be found below, along with publications, customer reviews and Q&amp;As</p>

### Properties

---

<b>Form</b>	Liquid
<b>Storage instructions</b>	Shipped at 4°C. Store at +4°C short term (1-2 weeks). Upon delivery aliquot. Store at -20°C long term. Avoid freeze / thaw cycle.
<b>Storage buffer</b>	pH: 7.40 Preservative: 0.011% Proclin 300 Constituents: 55.77% Glycerol (glycerin, glycerine), 44.219% PBS
<b>Purity</b>	Immunogen affinity purified
<b>Purification notes</b>	Antigen-specific affinity chromatography followed by Protein A affinity chromatography.
<b>Clonality</b>	Polyclonal
<b>Isotype</b>	IgG

## Applications

---

**The Abpromise guarantee** Our **Abpromise guarantee** covers the use of ab232743 in the following tested applications. The application notes include recommended starting dilutions; optimal dilutions/concentrations should be determined by the end user.

Application	Abreviews	Notes
IHC-P		Use a concentration of 5 - 20 µg/ml.
WB		Use a concentration of 0.5 - 5 µg/ml. Predicted molecular weight: 66 kDa.

## Target

---

**Function** Responsible for cleaving the alpha-chains of C4b and C3b in the presence of the cofactors C4-binding protein and factor H respectively.

**Tissue specificity** Plasma.

**Involvement in disease** Defects in CFI are a cause of susceptibility to hemolytic uremic syndrome atypical type 3 (AHUS3) [MIM:612923]. An atypical form of hemolytic uremic syndrome. It is a complex genetic disease characterized by microangiopathic hemolytic anemia, thrombocytopenia, renal failure and absence of episodes of enterocolitis and diarrhea. In contrast to typical hemolytic uremic syndrome, atypical forms have a poorer prognosis, with higher death rates and frequent progression to end-stage renal disease. Note=Susceptibility to the development of atypical hemolytic uremic syndrome can be conferred by mutations in various components of or regulatory factors in the complement cascade system. Other genes may play a role in modifying the phenotype.  
Defects in CFI are the cause of complement factor I deficiency (CFI deficiency) [MIM:610984]. CFI deficiency is an autosomal recessive condition associated with a propensity to pyogenic infections.

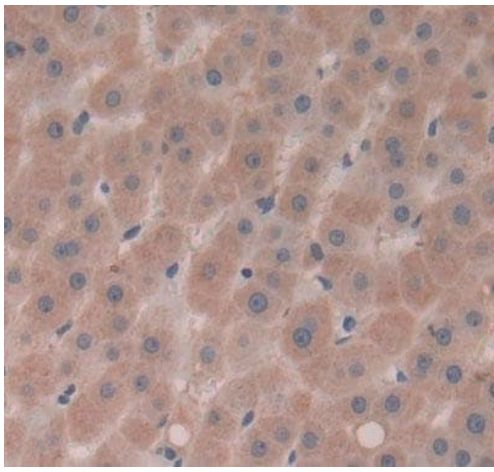
**Sequence similarities** Belongs to the peptidase S1 family.  
Contains 1 Kazal-like domain.  
Contains 2 LDL-receptor class A domains.  
Contains 1 peptidase S1 domain.  
Contains 1 SRCR domain.

**Cellular localization** Secreted > extracellular space.

---

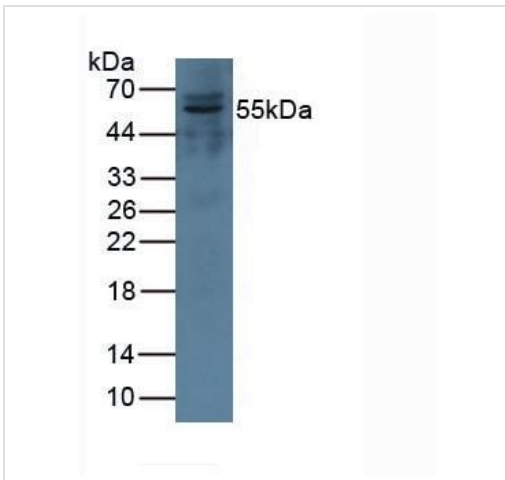
## Images

---



Immunohistochemistry (Formalin/PFA-fixed paraffin-embedded sections) - Anti-Factor I/CFI antibody (ab232743)

Formalin-fixed, paraffin-embedded human kidney tissue stained for Factor I/CFI using ab232743 at 20  $\mu\text{g}/\text{mL}$  in immunohistochemical analysis. DAB staining.



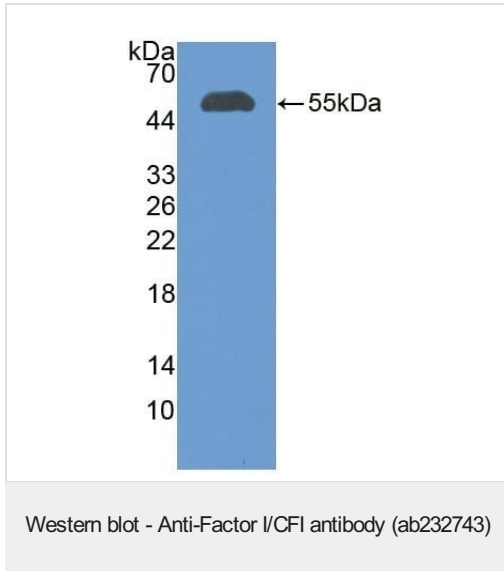
Western blot - Anti-Factor I/CFI antibody (ab232743)

Anti-Factor I/CFI antibody (ab232743) at 3  $\mu\text{g}/\text{ml}$  + Pig kidney tissue lysate

**Secondary**

HRP-Linked Guinea pig anti-rabbit at 1/2000 dilution

**Predicted band size:** 66 kDa



Anti-Factor I/CFI antibody (ab232743) at 3 µg/ml + Recombinant human Factor I/CFI protein

**Secondary**

HRP-Linked Guinea pig anti-rabbit at 1/2000 dilution

**Predicted band size:** 66 kDa

**Please note:** All products are "FOR RESEARCH USE ONLY. NOT FOR USE IN DIAGNOSTIC PROCEDURES"

**Our Abpromise to you: Quality guaranteed and expert technical support**

---

- Replacement or refund for products not performing as stated on the datasheet
- Valid for 12 months from date of delivery
- Response to your inquiry within 24 hours
- We provide support in Chinese, English, French, German, Japanese and Spanish
- Extensive multi-media technical resources to help you
- We investigate all quality concerns to ensure our products perform to the highest standards

If the product does not perform as described on this datasheet, we will offer a refund or replacement. For full details of the Abpromise, please visit <https://www.abcam.com/abpromise> or contact our technical team.

**Terms and conditions**

---

- Guarantee only valid for products bought direct from Abcam or one of our authorized distributors