



Anti-FAM29A antibody ab150806

3 Images

Overview

Product name	Anti-FAM29A antibody
Description	Rabbit polyclonal to FAM29A
Host species	Rabbit
Tested applications	Suitable for: ICC/IF, WB, IHC-P
Species reactivity	Reacts with: Human
Immunogen	Recombinant fragment, corresponding to amino acids 729-831 of Human FAM29A (UniProt: Q7Z4H7-1).  Run BLAST with ExPASy  Run BLAST with NCBI
Positive control	Human urinary bladder tissue; RT4 and U 251 MG lysates; U 251 MG cells.
General notes	<p>The Life Science industry has been in the grips of a reproducibility crisis for a number of years. Abcam is leading the way in addressing this with our range of recombinant monoclonal antibodies and knockout edited cell lines for gold-standard validation. Please check that this product meets your needs before purchasing.</p> <p>If you have any questions, special requirements or concerns, please send us an inquiry and/or contact our Support team ahead of purchase. Recommended alternatives for this product can be found below, along with publications, customer reviews and Q&As</p>

Properties

Form	Liquid
Storage instructions	Shipped at 4°C. Upon delivery aliquot and store at -20°C. Avoid repeated freeze / thaw cycles.
Storage buffer	pH: 7.20 Preservative: 0.02% Sodium azide Constituents: 59% PBS, 40% Glycerol (glycerin, glycerine)
Purity	Immunogen affinity purified
Clonality	Polyclonal
Isotype	IgG

Applications

The Abpromise guarantee

Our **Abpromise guarantee** covers the use of ab150806 in the following tested applications.

The application notes include recommended starting dilutions; optimal dilutions/concentrations should be determined by the end user.

Application	Abreviews	Notes
ICC/IF		Use a concentration of 0.25 - 2 µg/ml.
WB		1/100 - 1/250. Predicted molecular weight: 109 kDa.
IHC-P		1/200 - 1/500. Perform heat mediated antigen retrieval with citrate buffer pH 6 before commencing with IHC staining protocol.

Target

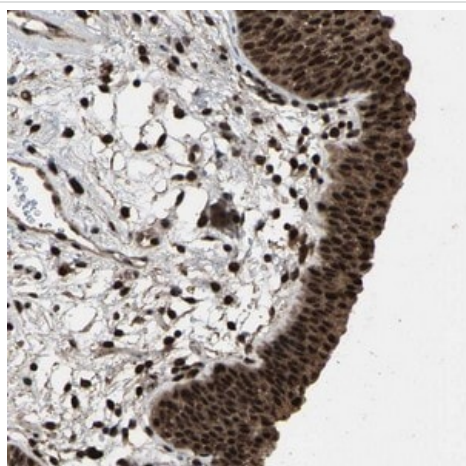
Relevance

FAM29A is required for progression through mitosis. It promotes the nucleation of microtubules from the spindle through recruitment of NEDD1 and gamma tubulin.

Cellular localization

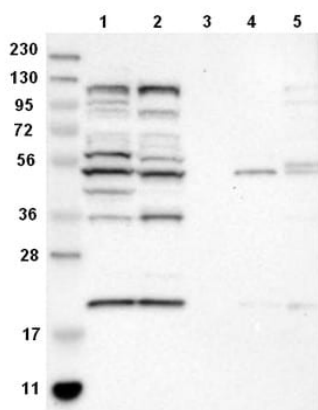
Cytoplasm, Cytoskeleton, Microtubule

Images



Immunohistochemical analysis of paraffin embedded Human bladder tissue labeling FAM29A with ab150806 antibody at a dilution of 1/200.

Immunohistochemistry (Formalin/PFA-fixed paraffin-embedded sections) - Anti-FAM29A antibody (ab150806)



Western blot - Anti-FAM29A antibody (ab150806)

All lanes : Anti-FAM29A antibody (ab150806) at 1/100 dilution

Lane 1 : RT4 cell lysate

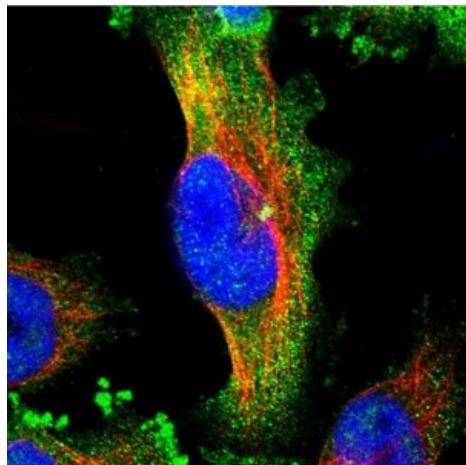
Lane 2 : U 251 MG cell lysate

Lane 3 : Human Plasma

Lane 4 : Human liver lysate

Lane 5 : Human tonsil lysate

Predicted band size: 109 kDa



Immunocytochemistry/ Immunofluorescence - Anti-FAM29A antibody (ab150806)

Immunofluorescent analysis of U 251 MG cells labeling FAM29A with ab150806 antibody at a dilution of 4 µg/ml.

Fixation/Permeabilization: PFA/Triton X-100.

Please note: All products are "FOR RESEARCH USE ONLY. NOT FOR USE IN DIAGNOSTIC PROCEDURES"

Our Abpromise to you: Quality guaranteed and expert technical support

- Replacement or refund for products not performing as stated on the datasheet
- Valid for 12 months from date of delivery

- Response to your inquiry within 24 hours
- We provide support in Chinese, English, French, German, Japanese and Spanish
- Extensive multi-media technical resources to help you
- We investigate all quality concerns to ensure our products perform to the highest standards

If the product does not perform as described on this datasheet, we will offer a refund or replacement. For full details of the Abpromise, please visit <https://www.abcam.com/abpromise> or contact our technical team.

Terms and conditions

- Guarantee only valid for products bought direct from Abcam or one of our authorized distributors