


Product datasheet

Anti-FAM91A1 antibody ab81618

★★★★★ [3 Abreviews](#) [1 References](#) [1 Image](#)

Overview

Product name	Anti-FAM91A1 antibody
Description	Rabbit polyclonal to FAM91A1
Host species	Rabbit
Tested applications	Suitable for: IP
Species reactivity	Reacts with: Human Predicted to work with: Mouse, Rat, Rabbit, Horse, Chicken, Guinea pig, Dog, Turkey, Pig, Chimpanzee, Rhesus monkey, Gorilla, Orangutan, Xenopus tropicalis, Platypus 
Immunogen	<p>Synthetic peptide within Human FAM91A1 aa 300-400. The exact immunogen sequence used to generate this antibody is proprietary information. If additional detail on the immunogen is needed to determine the suitability of the antibody for your needs, please contact our Scientific Support team to discuss your requirements. NP_659400.2</p> <p>Database link: Q658Y4</p>
Positive control	Whole cell lysate from HeLa cells.
General notes	<p>The Life Science industry has been in the grips of a reproducibility crisis for a number of years. Abcam is leading the way in addressing this with our range of recombinant monoclonal antibodies and knockout edited cell lines for gold-standard validation. Please check that this product meets your needs before purchasing.</p> <p>If you have any questions, special requirements or concerns, please send us an inquiry and/or contact our Support team ahead of purchase. Recommended alternatives for this product can be found below, along with publications, customer reviews and Q&As</p>

Properties

Form	Liquid
Storage instructions	Shipped at 4°C. Upon delivery aliquot and store at -20°C. Avoid freeze / thaw cycles.
Storage buffer	<p>pH: 7</p> <p>Preservative: 0.09% Sodium azide</p> <p>Constituents: 1.815% Tris, 1.764% Sodium citrate, 0.021% PBS</p>
Purity	Immunogen affinity purified
Purification notes	ab81618 was affinity purified using an epitope specific to FAM91A1 immobilized on solid support.

Clonality	Polyclonal
Isotype	IgG

Applications

The Abpromise guarantee Our **Abpromise guarantee** covers the use of ab81618 in the following tested applications. The application notes include recommended starting dilutions; optimal dilutions/concentrations should be determined by the end user.

Application	Abreviews	Notes
IP		

Application notes

IP: Use at 2 - 5 µg/mg of lysate.

Is unsuitable for WB.

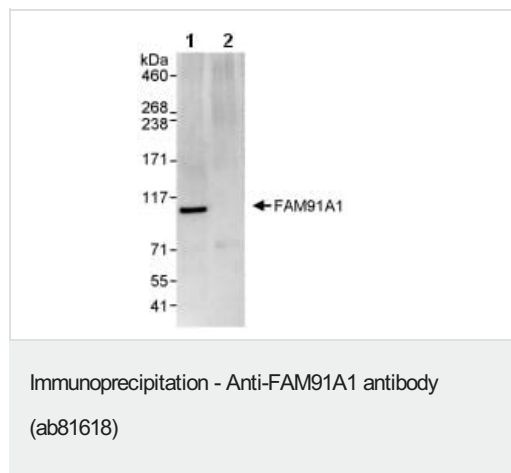
Not yet tested in other applications.

Optimal dilutions/concentrations should be determined by the end user.

Target

Relevance FAM91A1 (family with sequence similarity 91, member A1) is a 94 kDa hypothetical phospho protein that is not yet characterized.

Images



Detection of FAM91A1 by Western Blot of immunoprecipitates in whole cell lysate (1 mg for IP, 20% of IP loaded) from HeLa cells. ab81618 was used for IP at 3 µg/mg lysate (lane 1). Lane 2 represents control IgG. Detection was by chemiluminescence with an exposure time of 3 seconds.

Please note: All products are "FOR RESEARCH USE ONLY. NOT FOR USE IN DIAGNOSTIC PROCEDURES"

Our Abpromise to you: Quality guaranteed and expert technical support

- Replacement or refund for products not performing as stated on the datasheet
- Valid for 12 months from date of delivery
- Response to your inquiry within 24 hours

- We provide support in Chinese, English, French, German, Japanese and Spanish
- Extensive multi-media technical resources to help you
- We investigate all quality concerns to ensure our products perform to the highest standards

If the product does not perform as described on this datasheet, we will offer a refund or replacement. For full details of the Abpromise, please visit <https://www.abcam.com/abpromise> or contact our technical team.

Terms and conditions

- Guarantee only valid for products bought direct from Abcam or one of our authorized distributors