


Anti-FANCI antibody ab74332

[5 References](#) [2 Images](#)

Overview

Product name	Anti-FANCI antibody
Description	Rabbit polyclonal to FANCI
Host species	Rabbit
Tested applications	Suitable for: WB, IP
Species reactivity	Reacts with: Human Predicted to work with: Horse, Dog, Pig, Chimpanzee, Rhesus monkey, Gorilla, Orangutan, Bat 
Immunogen	Synthetic peptide corresponding to a region between residue 1025 and 1075 of human KIAA1794 (NP_060663.2)
Positive control	Whole cell lysates from HeLa and 293T cells.
General notes	<p>The Life Science industry has been in the grips of a reproducibility crisis for a number of years. Abcam is leading the way in addressing this with our range of recombinant monoclonal antibodies and knockout edited cell lines for gold-standard validation. Please check that this product meets your needs before purchasing.</p> <p>If you have any questions, special requirements or concerns, please send us an inquiry and/or contact our Support team ahead of purchase. Recommended alternatives for this product can be found below, along with publications, customer reviews and Q&As</p>

Properties

Form	Liquid
Storage instructions	Shipped at 4°C. Upon delivery aliquot and store at -20°C. Avoid freeze / thaw cycles.
Storage buffer	pH: 6.8 Preservative: 0.09% Sodium azide Constituents: 0.1% BSA, Tris buffered saline
Purity	Immunogen affinity purified
Clonality	Polyclonal
Isotype	IgG

Applications

The Abpromise guarantee

Our **Abpromise guarantee** covers the use of ab74332 in the following tested applications.

The application notes include recommended starting dilutions; optimal dilutions/concentrations should be determined by the end user.

Application	Abreviews	Notes
WB		1/2000 - 1/10000. Predicted molecular weight: 149 kDa.
IP		Use at 2-5 µg/mg of lysate.

Target

Function

Required for maintenance of chromosomal stability. Involved in the repair of DNA double-strand breaks by homologous recombination and in the repair of DNA cross-links. Participates in S phase and G2 phase checkpoint activation upon DNA damage. Promotes FANCD2 ubiquitination and recruitment to DNA repair sites.

Involvement in disease

Defects in FANCI are a cause of Fanconi anemia complementation group I (FANCI) [MIM:609053]. It is a disorder affecting all bone marrow elements and resulting in anemia, leukopenia and thrombopenia. It is associated with cardiac, renal and limb malformations, dermal pigmentary changes, and a predisposition to the development of malignancies. At the cellular level it is associated with hypersensitivity to DNA-damaging agents, chromosomal instability (increased chromosome breakage) and defective DNA repair.

Domain

The C-terminal 30 residues are probably required for function in DNA repair.

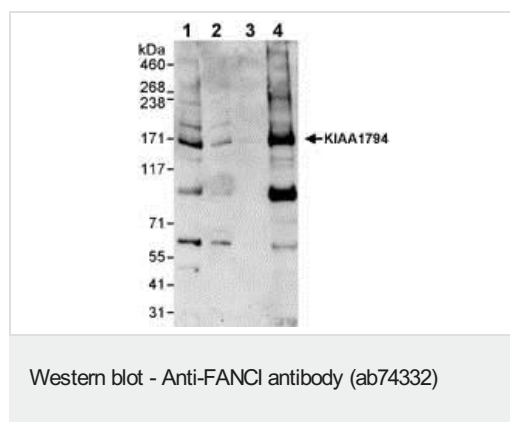
Post-translational modifications

Monoubiquitinated on Lys-523 during S phase and upon genotoxic stress. Deubiquitinated by USP1 as cells enter G2/M, or once DNA repair is completed. Monoubiquitination requires the FANCA-FANCB-FANCC-FANCE-FANCF-FANCG-FANCM complex. Ubiquitination is required for binding to chromatin, DNA repair, and normal cell cycle progression. Phosphorylated in response to DNA damage by ATM and/or ATR.

Cellular localization

Nucleus. Concentrates in nuclear foci upon genotoxic stress.

Images



All lanes : Anti-FANCI antibody (ab74332) at 0.04 µg/ml

Lane 1 : Whole HeLa cell lysate at 50 µg

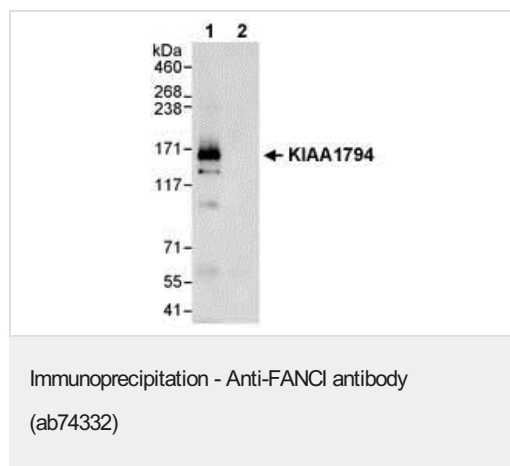
Lane 2 : Whole HeLa cell lysate at 15 µg

Lane 3 : Whole HeLa cell lysate at 5 µg

Lane 4 : Whole 293T cell lysate at 50 µg

Predicted band size: 149 kDa

Additional bands at: 100 kDa, 65 kDa. We are unsure as to the identity of these extra bands.



Detection of Human KIAA1794 by Immunoprecipitation in Whole cell lysate from HeLa cells (1 mg for IP, 20% of IP loaded) using ab74332 at 3 µg/mg for IP (Lane 1) and at 1 µg/ml for subsequent WB detection. Lane 2 represents IgG control IP.

Please note: All products are "FOR RESEARCH USE ONLY. NOT FOR USE IN DIAGNOSTIC PROCEDURES"

Our Abpromise to you: Quality guaranteed and expert technical support

- Replacement or refund for products not performing as stated on the datasheet
- Valid for 12 months from date of delivery
- Response to your inquiry within 24 hours
- We provide support in Chinese, English, French, German, Japanese and Spanish
- Extensive multi-media technical resources to help you
- We investigate all quality concerns to ensure our products perform to the highest standards

If the product does not perform as described on this datasheet, we will offer a refund or replacement. For full details of the Abpromise, please visit <https://www.abcam.com/abpromise> or contact our technical team.

Terms and conditions

- Guarantee only valid for products bought direct from Abcam or one of our authorized distributors