




Product datasheet

Anti-Fascin antibody [FSCN1/417] ab220195

[3 References](#) [6 Images](#)

Overview

Product name	Anti-Fascin antibody [FSCN1/417]
Description	Mouse monoclonal [FSCN1/417] to Fascin
Host species	Mouse
Tested applications	Suitable for: WB, ICC, IHC-P, Flow Cyt
Species reactivity	Reacts with: Human Predicted to work with: Mouse, Rat 
Immunogen	Recombinant full length protein corresponding to Human Fascin aa 1 to the C-terminus. Database link: Q16658  Run BLAST with  Run BLAST with
Positive control	Human Hodgkin's lymphoma, ovarian carcinoma and testicular carcinoma tissues; HeLa and K562 cell lysates.
General notes	<p>The Life Science industry has been in the grips of a reproducibility crisis for a number of years. Abcam is leading the way in addressing this with our range of recombinant monoclonal antibodies and knockout edited cell lines for gold-standard validation. Please check that this product meets your needs before purchasing.</p> <p>If you have any questions, special requirements or concerns, please send us an inquiry and/or contact our Support team ahead of purchase. Recommended alternatives for this product can be found below, along with publications, customer reviews and Q&As</p>

Properties

Form	Liquid
Storage instructions	Shipped at 4°C. Store at +4°C short term (1-2 weeks). Upon delivery aliquot. Store at -20°C long term. Avoid freeze / thaw cycle.
Storage buffer	pH: 7.2 Preservative: 0.05% Sodium azide Constituents: 0.05% BSA, 99% PBS
Purity	Protein A/G purified
Purification notes	ab220195 was purified from Bioreactor Concentrate by Protein A/G.
Clonality	Monoclonal

Clone number	FSCN1/417
Isotype	IgG2a
Light chain type	kappa

Applications

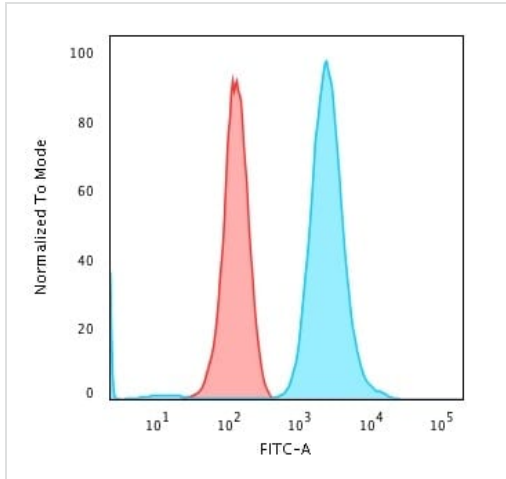
The Abpromise guarantee Our **Abpromise guarantee** covers the use of ab220195 in the following tested applications. The application notes include recommended starting dilutions; optimal dilutions/concentrations should be determined by the end user.

Application	Abreviews	Notes
WB		Use a concentration of 0.5 - 1 µg/ml. Predicted molecular weight: 54 kDa.
ICC		Use a concentration of 1 - 2 µg/ml.
IHC-P		Use a concentration of 0.5 - 1 µg/ml. Perform heat mediated antigen retrieval with citrate buffer pH 6 before commencing with IHC staining protocol.
Flow Cyt		Use 1-2µg for 10 ⁶ cells.

Target

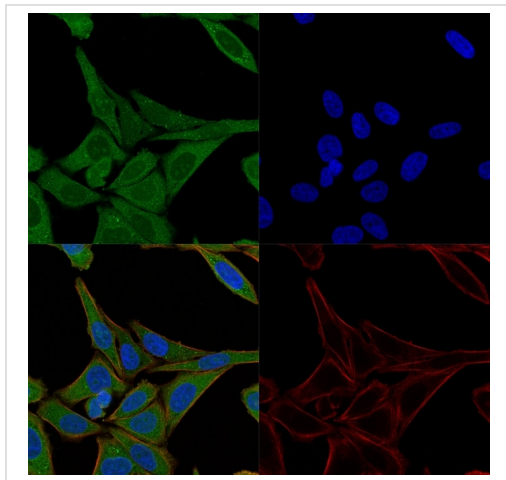
Function	Organizes filamentous actin into bundles with a minimum of 4.1:1 actin/fascin ratio. Plays a role in the organization of actin filament bundles and the formation of microspikes, membrane ruffles, and stress fibers. Important for the formation of a diverse set of cell protrusions, such as filopodia, and for cell motility and migration.
Tissue specificity	Ubiquitous.
Sequence similarities	Belongs to the fascin family.
Domain	Composed of four beta-trefoil domains.
Post-translational modifications	Phosphorylation on Ser-39 inhibits the actin-binding ability of fascin.
Cellular localization	Cytoplasm > cytoskeleton. Cell projection > filopodium. Cell projection > invadopodium.

Images



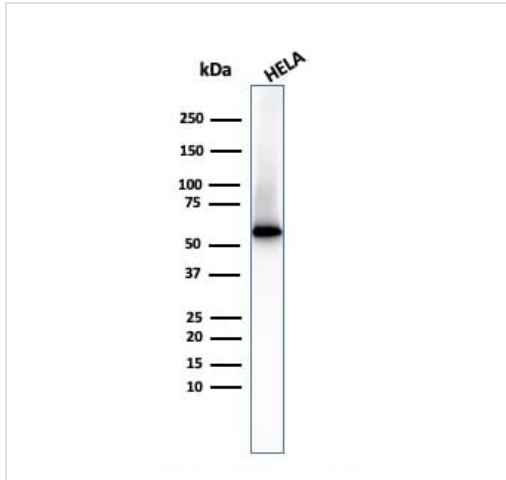
Flow cytometric analysis of PFA-fixed K562 cells using ab220195 followed by a Goat anti-Mouse IgG (blue); isotype control (red)

Flow Cytometry - Anti-Fascin antibody [FSCN1/417] (ab220195)



Immunofluorescence Analysis of HeLa cells labeling Fascin with ab220195 (Green). The nuclear counterstain is Hoescht (Blue). Membrane is Phalloidin 488 (Red)

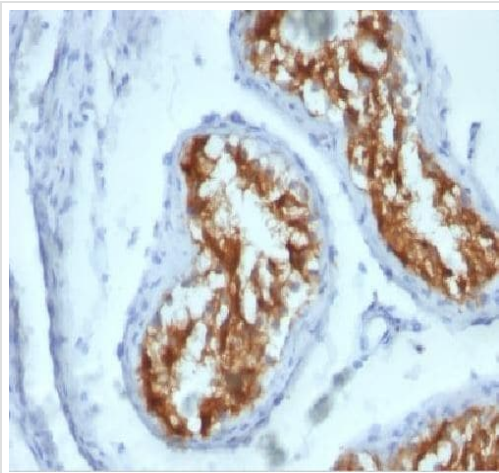
Immunocytochemistry - Anti-Fascin antibody [FSCN1/417] (ab220195)



Western blot - Anti-Fascin antibody [FSCN1/417]
(ab220195)

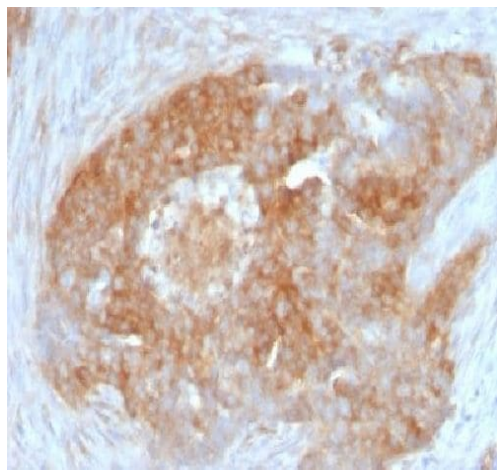
Anti-Fascin antibody [FSCN1/417] (ab220195) at 1 $\mu\text{g/ml}$ + HeLa cell lysate

Predicted band size: 54 kDa



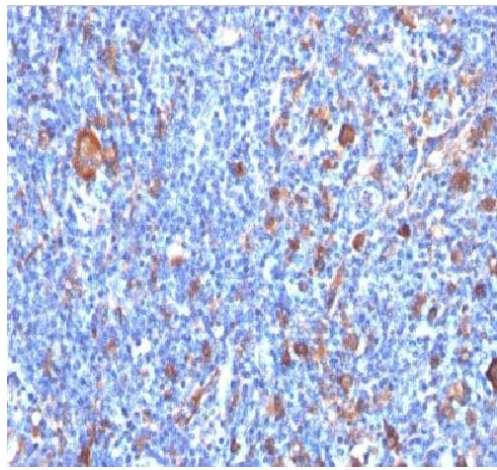
Immunohistochemistry (Formalin/PFA-fixed paraffin-embedded sections) - Anti-Fascin antibody [FSCN1/417] (ab220195)

Immunohistochemical analysis of formalin-fixed and paraffin-embedded Human testicular carcinoma tissue labeling Fascin with ab220195 at 1 $\mu\text{g/ml}$ dilution.



Immunohistochemical analysis of formalin-fixed and paraffin-embedded Human ovarian carcinoma tissue labeling Fascin with ab220195 at 1 µg/ml dilution.

Immunohistochemistry (Formalin/PFA-fixed paraffin-embedded sections) - Anti-Fascin antibody [FSCN1/417] (ab220195)



Immunohistochemical analysis of formalin-fixed and paraffin-embedded Human Hodgkin's lymphoma tissue labeling Fascin with ab220195 at 1 µg/ml dilution.

Immunohistochemistry (Formalin/PFA-fixed paraffin-embedded sections) - Anti-Fascin antibody [FSCN1/417] (ab220195)

Please note: All products are "FOR RESEARCH USE ONLY. NOT FOR USE IN DIAGNOSTIC PROCEDURES"

Our Abpromise to you: Quality guaranteed and expert technical support

- Replacement or refund for products not performing as stated on the datasheet

- Valid for 12 months from date of delivery
- Response to your inquiry within 24 hours

- We provide support in Chinese, English, French, German, Japanese and Spanish
- Extensive multi-media technical resources to help you
- We investigate all quality concerns to ensure our products perform to the highest standards

If the product does not perform as described on this datasheet, we will offer a refund or replacement. For full details of the Abpromise, please visit <https://www.abcam.com/abpromise> or contact our technical team.

Terms and conditions

- Guarantee only valid for products bought direct from Abcam or one of our authorized distributors