


## Product datasheet

# Anti-Fast Myosin Skeletal Heavy chain antibody ab91506

★★★★★ [7 Abreviews](#) [63 References](#) [3 Images](#)

### Overview

<b>Product name</b>	Anti-Fast Myosin Skeletal Heavy chain antibody
<b>Description</b>	Rabbit polyclonal to Fast Myosin Skeletal Heavy chain
<b>Host species</b>	Rabbit
<b>Specificity</b>	Replenishment batches of ab91506 are tested in IHC-P. Previous batches were additionally validated in WB. This application is still expected to work and is covered by our Abpromise guarantee.
<b>Tested applications</b>	<b>Suitable for:</b> WB, IHC-P
<b>Species reactivity</b>	<b>Reacts with:</b> Mouse, Rat, Human <b>Predicted to work with:</b> Sheep, Guinea pig, Cow, Pig 
<b>Immunogen</b>	Synthetic peptide. This information is proprietary to Abcam and/or its suppliers. (Peptide available as <a href="#">ab102066</a> )
<b>General notes</b>	<p>The Life Science industry has been in the grips of a reproducibility crisis for a number of years. Abcam is leading the way in addressing this with our range of recombinant monoclonal antibodies and knockout edited cell lines for gold-standard validation. Please check that this product meets your needs before purchasing.</p> <p>If you have any questions, special requirements or concerns, please send us an inquiry and/or contact our Support team ahead of purchase. Recommended alternatives for this product can be found below, along with publications, customer reviews and Q&amp;As</p>

### Properties

<b>Form</b>	Liquid
<b>Storage instructions</b>	Shipped at 4°C. Store at +4°C short term (1-2 weeks). Upon delivery aliquot. Store at -20°C or -80°C. Avoid freeze / thaw cycle.
<b>Storage buffer</b>	<p>pH: 7.40</p> <p>Preservative: 0.02% Sodium azide</p> <p>Constituent: PBS</p> <p>Batches of this product that have a concentration &lt; 1mg/ml may have BSA added as a stabilising agent. If you would like information about the formulation of a specific lot, please contact our</p>

	scientific support team who will be happy to help.
<b>Purity</b>	Immunogen affinity purified
<b>Clonality</b>	Polyclonal
<b>Isotype</b>	IgG

## Applications

**The Abpromise guarantee** Our **Abpromise guarantee** covers the use of ab91506 in the following tested applications.

The application notes include recommended starting dilutions; optimal dilutions/concentrations should be determined by the end user.

Application	Abreviews	Notes
WB		Use a concentration of 1 µg/ml. Detects a band of approximately 223 kDa (predicted molecular weight: 223 kDa).
IHC-P	★★★★★ (1)	Use a concentration of 1 µg/ml.

## Target

<b>Function</b>	Muscle contraction.
<b>Sequence similarities</b>	Contains 1 IQ domain. Contains 1 myosin head-like domain.
<b>Domain</b>	The rodlike tail sequence is highly repetitive, showing cycles of a 28-residue repeat pattern composed of 4 heptapeptides, characteristic for alpha-helical coiled coils. Each myosin heavy chain can be split into 1 light meromyosin (LMM) and 1 heavy meromyosin (HMM). It can later be split further into 2 globular subfragments (S1) and 1 rod-shaped subfragment (S2).
<b>Cellular localization</b>	Cytoplasm > myofibril. Thick filaments of the myofibrils.

## Images



**All lanes :** Anti-Fast Myosin Skeletal Heavy chain antibody (ab91506) at 1 µg/ml

**Lane 1 :** Human skeletal muscle tissue lysate - total protein (**ab29330**)

**Lane 2 :** Skeletal Muscle (Mouse) Tissue Lysate

**Lane 3 :** Skeletal Muscle (Rat) Tissue Lysate

Lysates/proteins at 10 µg per lane.

### Secondary

**All lanes :** Goat polyclonal Secondary Antibody to Rabbit IgG - H&L (HRP), pre-adsorbed at 1/50000 dilution

Developed using the ECL technique.

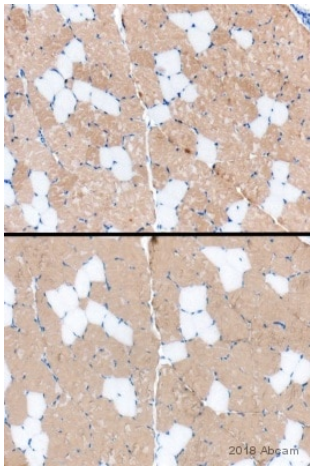
Performed under reducing conditions.

**Predicted band size:** 223 kDa

**Observed band size:** 223 kDa

**Exposure time:** 1 minute

This blot was produced using a 4-12% Bis-tris gel under the MOPS buffer system. The gel was run at 200V for 50 minutes before being transferred onto a Nitrocellulose membrane at 30V for 70 minutes. The membrane was then blocked for an hour using 2% Bovine Serum Albumin before being incubated with ab91506 overnight at 4°C. Antibody binding was detected using an anti-rabbit antibody conjugated to HRP, and visualised using ECL development solution **ab133406**.



Immunohistochemistry (Formalin/PFA-fixed paraffin-embedded sections) - Anti-Fast Myosin Skeletal Heavy chain antibody (ab91506)

Image courtesy of Mr Carl Hobbs

Formalin-fixed, paraffin-embedded pig skeletal muscle tissue stained for Fast Myosin Skeletal Heavy chain using ab91506 at 1/1000 dilution (for 2 hours at room temperature) in immunohistochemical analysis (upper image).

Note: Lower image is a comparison using **ab51263**.



Immunohistochemistry (Formalin/PFA-fixed paraffin-embedded sections) - Anti-Fast Myosin Skeletal Heavy chain antibody (ab91506)

IHC image of Fast Myosin Skeletal Heavy chain staining in Mouse skeletal muscle FFPE section, performed on a Bond<sup>TM</sup> system using the standard protocol F. The section was pre-treated using heat mediated antigen retrieval with sodium citrate buffer (pH6, epitope retrieval solution 1) for 20 mins. The section was then incubated with ab91506, 1 µg/ml, for 15 mins at room temperature and detected using an HRP conjugated compact polymer system. DAB was used as the chromogen. The section was then counterstained with haematoxylin and mounted with DPX

### **Our Abpromise to you: Quality guaranteed and expert technical support**

---

- Replacement or refund for products not performing as stated on the datasheet
- Valid for 12 months from date of delivery
- Response to your inquiry within 24 hours
- We provide support in Chinese, English, French, German, Japanese and Spanish
- Extensive multi-media technical resources to help you
- We investigate all quality concerns to ensure our products perform to the highest standards

If the product does not perform as described on this datasheet, we will offer a refund or replacement. For full details of the Abpromise, please visit <https://www.abcam.com/abpromise> or contact our technical team.

### **Terms and conditions**

---

- Guarantee only valid for products bought direct from Abcam or one of our authorized distributors