



## Product datasheet

### Anti-FBXL22 antibody ab223059

3 Images

#### Overview

<b>Product name</b>	Anti-FBXL22 antibody
<b>Description</b>	Rabbit polyclonal to FBXL22
<b>Host species</b>	Rabbit
<b>Tested applications</b>	<b>Suitable for:</b> WB, IHC-P, ICC/IF
<b>Species reactivity</b>	<b>Reacts with:</b> Mouse, Human
<b>Immunogen</b>	Recombinant fragment corresponding to Human FBXL22 aa 100 to the C-terminus. Database link: <a href="#">Q6P050</a>
	 <a href="#">Run BLAST with</a>  <a href="#">Run BLAST with</a>
<b>Positive control</b>	WB: Mouse brain lysate; human placenta lysate. IHC-P: Human pancreatic cancer tissue. ICC/IF: HeLa cells.
<b>General notes</b>	<p>The Life Science industry has been in the grips of a reproducibility crisis for a number of years. Abcam is leading the way in addressing this with our range of recombinant monoclonal antibodies and knockout edited cell lines for gold-standard validation. Please check that this product meets your needs before purchasing.</p> <p>If you have any questions, special requirements or concerns, please send us an inquiry and/or contact our Support team ahead of purchase. Recommended alternatives for this product can be found below, along with publications, customer reviews and Q&amp;As</p>

#### Properties

<b>Form</b>	Liquid
<b>Storage instructions</b>	Shipped at 4°C. Store at +4°C short term (1-2 weeks). Upon delivery aliquot. Store at -20°C long term. Avoid freeze / thaw cycle.
<b>Storage buffer</b>	pH: 7.40 Preservative: 0.03% Proclin 300 Constituents: 50% Glycerol (glycerin, glycerine), PBS
<b>Purity</b>	Protein G purified
<b>Purification notes</b>	Purity>95%
<b>Clonality</b>	Polyclonal
<b>Isotype</b>	IgG

## Applications

### The Abpromise guarantee

Our **Abpromise guarantee** covers the use of ab223059 in the following tested applications.

The application notes include recommended starting dilutions; optimal dilutions/concentrations should be determined by the end user.

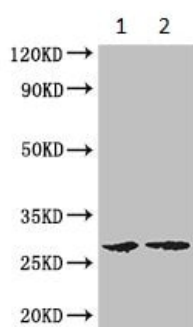
Application	Abreviews	Notes
WB		1/1000 - 1/5000. Predicted molecular weight: 27 kDa.
IHC-P		1/20 - 1/200.
ICC/IF		1/50 - 1/200.

## Target

### Relevance

This gene encodes a member of the F-box protein family. This F-box protein interacts with S-phase kinase-associated protein 1A and cullin in order to form SCF complexes which function as ubiquitin ligases.

## Images



Western blot - Anti-FBXL22 antibody (ab223059)

**All lanes :** Anti-FBXL22 antibody (ab223059) at 1/1000 dilution

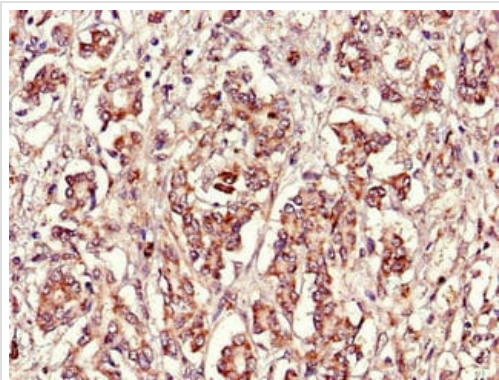
**Lane 1 :** Mouse brain lysate

**Lane 2 :** Human placenta lysate

### Secondary

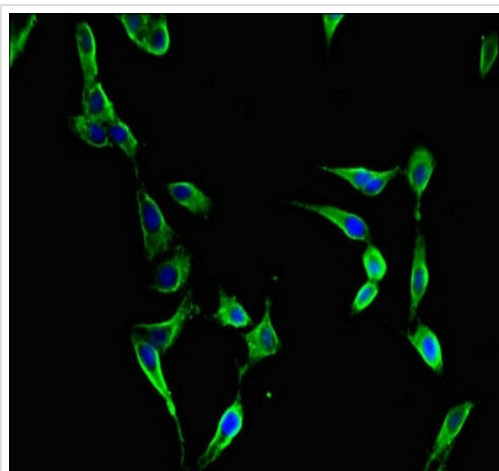
**All lanes :** Goat Anti-Rabbit IgG at 1/50000 dilution

**Predicted band size:** 27 kDa



Immunohistochemistry (Formalin/PFA-fixed paraffin-embedded sections) - Anti-FBXL22 antibody (ab223059)

Paraffin embedded human pancreatic cancer tissue stained for FBXL22 with ab223059 at 1/100 dilution in immunohistochemical analysis.



Immunocytochemistry/ Immunofluorescence - Anti-FBXL22 antibody (ab223059)

HeLa (human epithelial cell line from cervix adenocarcinoma) cells stained for FBXL22 (green) using ab223059 at 1/100 dilution in ICC/IF. Secondary: Alexa Fluor® 488-conjugated Goat Anti-Rabbit IgG (H+L).

**Please note:** All products are "FOR RESEARCH USE ONLY. NOT FOR USE IN DIAGNOSTIC PROCEDURES"

### Our Abpromise to you: Quality guaranteed and expert technical support

- Replacement or refund for products not performing as stated on the datasheet
- Valid for 12 months from date of delivery
- Response to your inquiry within 24 hours
- We provide support in Chinese, English, French, German, Japanese and Spanish
- Extensive multi-media technical resources to help you
- We investigate all quality concerns to ensure our products perform to the highest standards

If the product does not perform as described on this datasheet, we will offer a refund or replacement. For full details of the Abpromise, please visit <https://www.abcam.com/abpromise> or contact our technical team.

### Terms and conditions

- 
- Guarantee only valid for products bought direct from Abcam or one of our authorized distributors