


Product datasheet

Anti-FBXO31 antibody ab86137

[5 References](#) [1 Image](#)

Overview

Product name	Anti-FBXO31 antibody
Description	Rabbit polyclonal to FBXO31
Host species	Rabbit
Tested applications	Suitable for: WB
Species reactivity	Reacts with: Mouse, Human Predicted to work with: Chimpanzee, Rhesus monkey, Gorilla, Orangutan, Elephant 
Immunogen	Synthetic peptide corresponding to Human FBXO31 aa 450-550. Database link: Q5XUX0
Positive control	Whole cell lysate from 293T and mouse NIH3T3 cells.
General notes	<p>The Life Science industry has been in the grips of a reproducibility crisis for a number of years. Abcam is leading the way in addressing this with our range of recombinant monoclonal antibodies and knockout edited cell lines for gold-standard validation. Please check that this product meets your needs before purchasing.</p> <p>If you have any questions, special requirements or concerns, please send us an inquiry and/or contact our Support team ahead of purchase. Recommended alternatives for this product can be found below, along with publications, customer reviews and Q&As</p>

Properties

Form	Liquid
Storage instructions	Shipped at 4°C. Upon delivery aliquot and store at -20°C. Avoid freeze / thaw cycles.
Storage buffer	pH: 7 Preservative: 0.09% Sodium azide Constituent: Tris citrate/phosphate
Purity	Immunogen affinity purified
Clonality	Polyclonal
Isotype	IgG

Applications

The Abpromise guarantee

Our **Abpromise guarantee** covers the use of ab86137 in the following tested applications.

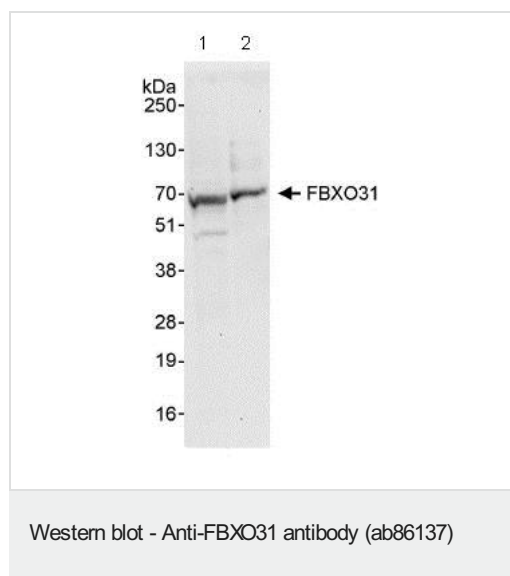
The application notes include recommended starting dilutions; optimal dilutions/concentrations should be determined by the end user.

Application	Abreviews	Notes
WB		1/1000 - 1/5000. Detects a band of approximately 61 kDa (predicted molecular weight: 61 kDa).

Target

Function	Component of some SCF (SKP1-cullin-F-box) protein ligase complex that plays a central role in G1 arrest following DNA damage. Specifically recognizes phosphorylated cyclin-D1 (CCND1), promoting its ubiquitination and degradation by the proteasome, resulting in G1 arrest. May act as a tumor suppressor.
Tissue specificity	Highly expressed in brain. Expressed at moderate levels in most tissues, except bone marrow.
Pathway	Protein modification; protein ubiquitination.
Sequence similarities	Belongs to the FBXO31 family. Contains 1 F-box domain.
Developmental stage	Expression is cell-cycle regulated, and peaks at late G2 to early G1 phase (at protein level).
Post-translational modifications	Phosphorylation at Ser-278 by ATM following gamma-irradiation results in its stabilization.

Images



All lanes : Anti-FBXO31 antibody (ab86137) at 0.4 µg/ml

Lane 1 : Whole cell lysate from 293T cells

Lane 2 : Whole cell lysate from mouse NIH3T3 cells

Lysates/proteins at 50 µg per lane.

Predicted band size: 61 kDa

Observed band size: 61 kDa

Exposure time: 30 seconds

Please note: All products are "FOR RESEARCH USE ONLY. NOT FOR USE IN DIAGNOSTIC PROCEDURES"

Our Abpromise to you: Quality guaranteed and expert technical support

- Replacement or refund for products not performing as stated on the datasheet

- Valid for 12 months from date of delivery
- Response to your inquiry within 24 hours

- We provide support in Chinese, English, French, German, Japanese and Spanish
- Extensive multi-media technical resources to help you
- We investigate all quality concerns to ensure our products perform to the highest standards

If the product does not perform as described on this datasheet, we will offer a refund or replacement. For full details of the Abpromise, please visit <https://www.abcam.com/abpromise> or contact our technical team.

Terms and conditions

- Guarantee only valid for products bought direct from Abcam or one of our authorized distributors