

Anti-FCN1/M-Ficolin antibody [1] ab112476

[2 Images](#)

Overview

Product name	Anti-FCN1/M-Ficolin antibody [1]
Description	Mouse monoclonal [1] to FCN1/M-Ficolin
Host species	Mouse
Tested applications	Suitable for: IHC-P
Species reactivity	Reacts with: Human
Immunogen	Recombinant fragment corresponding to Human FCN1/M-Ficolin aa 50-350. Database link: O00602
Positive control	Human lung tissue Human liver tissue
General notes	<p>The Life Science industry has been in the grips of a reproducibility crisis for a number of years. Abcam is leading the way in addressing this with our range of recombinant monoclonal antibodies and knockout edited cell lines for gold-standard validation. Please check that this product meets your needs before purchasing.</p> <p>If you have any questions, special requirements or concerns, please send us an inquiry and/or contact our Support team ahead of purchase. Recommended alternatives for this product can be found below, along with publications, customer reviews and Q&As</p>

Properties

Form	Liquid
Storage instructions	Shipped at 4°C. Store at +4°C short term (1-2 weeks). Store at -20°C or -80°C. Avoid freeze / thaw cycle.
Storage buffer	pH: 7.40 Preservative: 0.1% Sodium azide Constituents: 97% PBS, 2.9% Sodium chloride
Purity	Protein G purified
Clonality	Monoclonal
Clone number	1
Isotype	IgG
Light chain type	kappa

Applications

The Abpromise guarantee

Our **Abpromise guarantee** covers the use of ab112476 in the following tested applications.

The application notes include recommended starting dilutions; optimal dilutions/concentrations should be determined by the end user.

Application	Abreviews	Notes
IHC-P		Use at an assay dependent concentration.

Target

Function

Involved in serum exerting lectin activity. Binds GlcNAc.

Tissue specificity

Peripheral blood leukocytes. Also detected in spleen, lung, and thymus, may be due to the presence of tissue macrophages or trapped blood in these tissues. Not detected on lymphocytes and granulocytes.

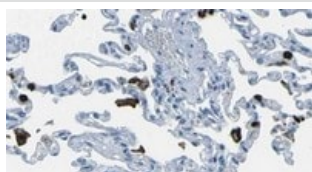
Sequence similarities

Belongs to the ficolin lectin family.
Contains 1 collagen-like domain.
Contains 1 fibrinogen C-terminal domain.

Cellular localization

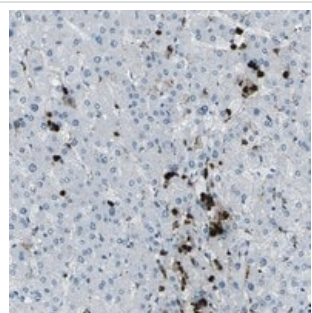
Secreted. Found on the monocyte surface.

Images



Immunohistochemistry (Formalin/PFA-fixed paraffin-embedded sections) - Anti-FCN1/M-Ficolin antibody
[1] (ab112476)

ab112476, staining paraffin embedded Human lung tissue by Immunohistochemistry.



Immunohistochemistry (Formalin/PFA-fixed paraffin-embedded sections) - Anti-FCN1/M-Ficolin antibody
[1] (ab112476)

ab112476, staining paraffin embedded Human liver tissue by Immunohistochemistry.

Please note: All products are "FOR RESEARCH USE ONLY. NOT FOR USE IN DIAGNOSTIC PROCEDURES"

Our Abpromise to you: Quality guaranteed and expert technical support

- Replacement or refund for products not performing as stated on the datasheet
- Valid for 12 months from date of delivery
- Response to your inquiry within 24 hours

- We provide support in Chinese, English, French, German, Japanese and Spanish
- Extensive multi-media technical resources to help you
- We investigate all quality concerns to ensure our products perform to the highest standards

If the product does not perform as described on this datasheet, we will offer a refund or replacement. For full details of the Abpromise, please visit <https://www.abcam.com/abpromise> or contact our technical team.

Terms and conditions

- Guarantee only valid for products bought direct from Abcam or one of our authorized distributors