

Product datasheet

Anti-FCP1 antibody ab137683

[1 References](#) [3 Images](#)

Overview

Product name	Anti-FCP1 antibody
Description	Rabbit polyclonal to FCP1
Host species	Rabbit
Tested applications	Suitable for: WB, IHC-P
Species reactivity	Reacts with: Human
Immunogen	Synthetic peptide, corresponding to a region within amino acids 1-11 of Human FCP1. Run BLAST with ExPASy Run BLAST with NCBI
Positive control	293T, A431, H1299, HeLa, HepG2 and MOLT4 whole cell lysates; Human cal27 and HeLa xenograft tissues.
General notes	<p>The Life Science industry has been in the grips of a reproducibility crisis for a number of years. Abcam is leading the way in addressing this with our range of recombinant monoclonal antibodies and knockout edited cell lines for gold-standard validation. Please check that this product meets your needs before purchasing.</p> <p>If you have any questions, special requirements or concerns, please send us an inquiry and/or contact our Support team ahead of purchase. Recommended alternatives for this product can be found below, along with publications, customer reviews and Q&As</p>

Properties

Form	Liquid
Storage instructions	Shipped at 4°C. Upon delivery aliquot. Store at -20°C or -80°C. Avoid freeze / thaw cycle.
Storage buffer	pH: 7.00 Preservative: 0.01% Thimerosal (merthiolate) Constituents: 59.99% PBS, 40% Glycerol (glycerin, glycerine)
Purity	Immunogen affinity purified
Clonality	Polyclonal
Isotype	IgG

Applications

The Abpromise guarantee

Our **Abpromise guarantee** covers the use of ab137683 in the following tested applications.

The application notes include recommended starting dilutions; optimal dilutions/concentrations should be determined by the end user.

Application	Abreviews	Notes
WB		1/500 - 1/3000. Predicted molecular weight: 104 kDa.
IHC-P		1/100 - 1/1000. Perform heat mediated antigen retrieval with citrate buffer pH 6 before commencing with IHC staining protocol. Or Tris-EDTA buffer (pH8.0)

Target**Function**

Processively dephosphorylates 'Ser-2' and 'Ser-5' of the heptad repeats YSPTSPS in the C-terminal domain of the largest RNA polymerase II subunit. This promotes the activity of RNA polymerase II.

Tissue specificity

Ubiquitously expressed. Isoform 3 is expressed in heart, brain, placenta, lung, liver, skeletal muscle, kidney and placenta.

Involvement in disease

Defects in CTFP1 are a cause of congenital cataracts facial dysmorphism and neuropathy syndrome (CCFDN) [MIM:604168]. CCFDN is an autosomal recessive developmental disorder that occurs in an endogamous group of Vlax Roma (Gypsies). The syndrome is characterized by a complex clinical phenotype with seemingly unrelated features involving multiple organs and systems. Developmental abnormalities include congenital cataracts and microcornea, hypomyelination of the peripheral nervous system, impaired physical growth, delayed early motor and intellectual development, facial dysmorphism and hypogonadism. Central nervous system involvement, with cerebral and spinal cord atrophy, may be the result of disrupted development with superimposed degenerative changes. Affected individuals are prone to severe rhabdomyolysis after viral infections and to serious complications related to general anesthesia (such as pulmonary edema and epileptic seizures).

Sequence similarities

Contains 1 BRCT domain.
Contains 1 FCP1 homology domain.

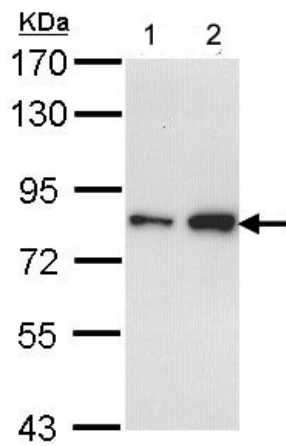
Post-translational modifications

Phosphorylated. In the presence of TFIIIF, the phosphorylated form has an increased CTD phosphatase activity. The phosphorylation is required for the physical interaction with GTF2F1.

Cellular localization

Nucleus.

Images



Western blot - Anti-FCP1 antibody (ab137683)

All lanes : Anti-FCP1 antibody (ab137683) at 1/1000 dilution

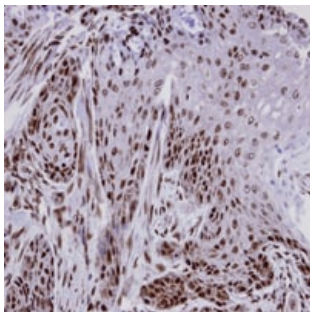
Lane 1 : A431 whole cell lysate

Lane 2 : H1299 whole cell lysate

Lysates/proteins at 30 µg per lane.

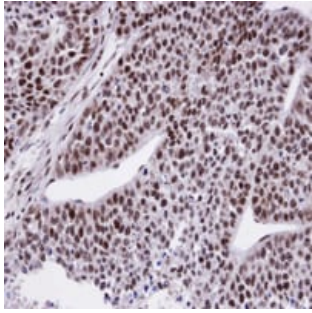
Predicted band size: 104 kDa

7.5% SDS PAGE



Immunohistochemistry (Formalin/PFA-fixed paraffin-embedded sections) - Anti-FCP1 antibody (ab137683)

Immunohistochemical analysis of paraffin-embedded Human Cal27 xenograft tissue labelling FCP1 with ab137683 at 1/100 dilution.



Immunohistochemical analysis of paraffin-embedded Human HeLa xenograft tissue labelling FCP1 with ab137683 at 1/100 dilution.

Immunohistochemistry (Formalin/PFA-fixed paraffin-embedded sections) - Anti-FCP1 antibody (ab137683)

Please note: All products are "FOR RESEARCH USE ONLY. NOT FOR USE IN DIAGNOSTIC PROCEDURES"

Our Abpromise to you: Quality guaranteed and expert technical support

- Replacement or refund for products not performing as stated on the datasheet
- Valid for 12 months from date of delivery
- Response to your inquiry within 24 hours
- We provide support in Chinese, English, French, German, Japanese and Spanish
- Extensive multi-media technical resources to help you
- We investigate all quality concerns to ensure our products perform to the highest standards

If the product does not perform as described on this datasheet, we will offer a refund or replacement. For full details of the Abpromise, please visit <https://www.abcam.com/abpromise> or contact our technical team.

Terms and conditions

- Guarantee only valid for products bought direct from Abcam or one of our authorized distributors