

Anti-FDFT1 antibody ab236666

4 Images

Overview

Product name	Anti-FDFT1 antibody
Description	Rabbit polyclonal to FDFT1
Host species	Rabbit
Tested applications	Suitable for: IHC-P, WB, ICC/IF
Species reactivity	Reacts with: Mouse, Human
Immunogen	Recombinant fragment corresponding to Human FDFT1 aa 1-260. Database link: P37268
Positive control	WB: Mouse liver lysate; HEK-293T whole cell lysate. IHC-P: Human liver cancer and lung cancer tissue. ICC/IF: HEK-293 cells.
General notes	<p>The Life Science industry has been in the grips of a reproducibility crisis for a number of years. Abcam is leading the way in addressing this with our range of recombinant monoclonal antibodies and knockout edited cell lines for gold-standard validation. Please check that this product meets your needs before purchasing.</p> <p>If you have any questions, special requirements or concerns, please send us an inquiry and/or contact our Support team ahead of purchase. Recommended alternatives for this product can be found below, along with publications, customer reviews and Q&As</p>

Properties

Form	Liquid
Storage instructions	Shipped at 4°C. Store at +4°C short term (1-2 weeks). Upon delivery aliquot. Store at -20°C long term. Avoid freeze / thaw cycle.
Storage buffer	pH: 7.30 Preservative: 0.02% Sodium azide Constituents: PBS, 50% Glycerol (glycerin, glycerine)
Purity	Immunogen affinity purified
Clonality	Polyclonal
Isotype	IgG

Applications

The Abpromise guarantee

Our **Abpromise guarantee** covers the use of ab236666 in the following tested applications.

The application notes include recommended starting dilutions; optimal dilutions/concentrations should be determined by the end user.

Application	Abreviews	Notes
IHC-P		1/20 - 1/200.
WB		1/1000 - 1/5000. Predicted molecular weight: 48 kDa.
ICC/IF		1/50 - 1/200.

Target

Pathway

Terpene metabolism; lanosterol biosynthesis; lanosterol from farnesyl diphosphate: step 1/3.

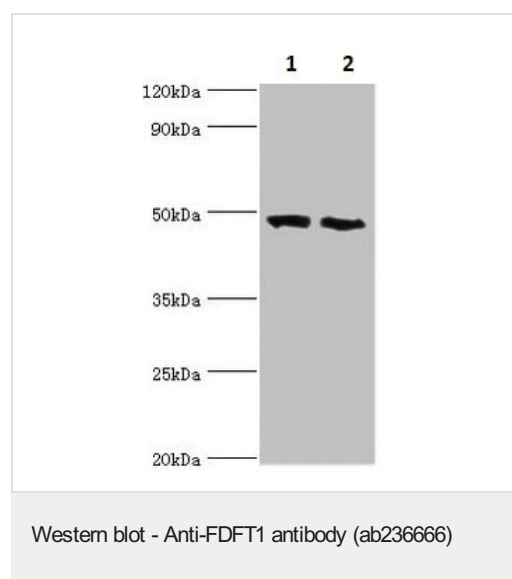
Sequence similarities

Belongs to the phytoene/squalene synthase family.

Cellular localization

Endoplasmic reticulum membrane.

Images



All lanes : Anti-FDFT1 antibody (ab236666) at 1/1000 dilution

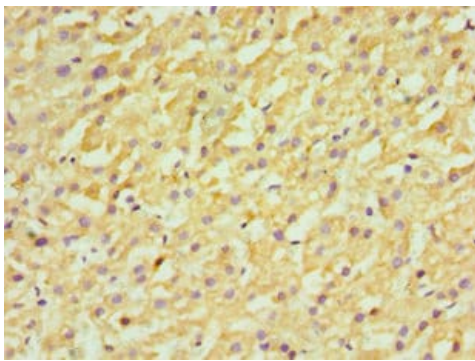
Lane 1 : HEK-293T (human epithelial cell line from embryonic kidney transformed with large T antigen) cell lysate

Lane 2 : Mouse liver lysate

Secondary

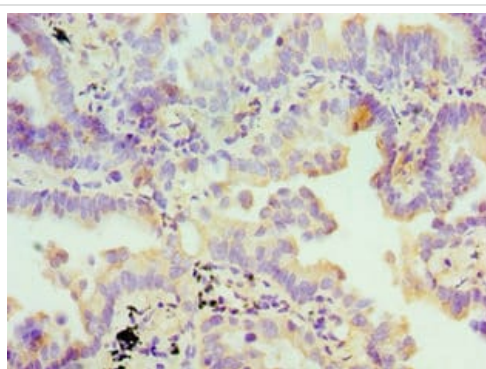
All lanes : Goat polyclonal to rabbit IgG at 1/10000 dilution

Predicted band size: 48 kDa



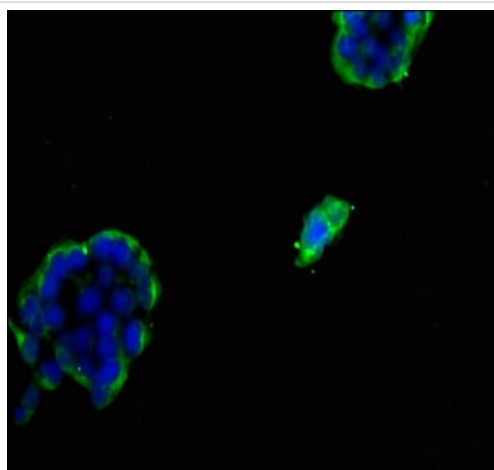
Immunohistochemistry (Formalin/PFA-fixed paraffin-embedded sections) - Anti-FDFT1 antibody (ab236666)

Paraffin-embedded human liver cancer tissue stained for FDFT1 using ab236666 at 1/100 dilution in immunohistochemical analysis.



Immunohistochemistry (Formalin/PFA-fixed paraffin-embedded sections) - Anti-FDFT1 antibody (ab236666)

Paraffin-embedded human lung cancer tissue stained for FDFT1 using ab236666 at 1/100 dilution in immunohistochemical analysis.



Immunocytochemistry/ Immunofluorescence - Anti-FDFT1 antibody (ab236666)

HEK-293 (human epithelial cell line from embryonic kidney) cells labeling FDFT1 using ab236666 at 1/100 dilution in ICC/IF. Secondary antibody was Alexa Fluor® 488-conjugated goat anti-rabbit IgG (H+L).

Please note: All products are "FOR RESEARCH USE ONLY. NOT FOR USE IN DIAGNOSTIC PROCEDURES"

Our Abpromise to you: Quality guaranteed and expert technical support

- Replacement or refund for products not performing as stated on the datasheet
- Valid for 12 months from date of delivery
- Response to your inquiry within 24 hours

- We provide support in Chinese, English, French, German, Japanese and Spanish
- Extensive multi-media technical resources to help you
- We investigate all quality concerns to ensure our products perform to the highest standards

If the product does not perform as described on this datasheet, we will offer a refund or replacement. For full details of the Abpromise, please visit <https://www.abcam.com/abpromise> or contact our technical team.

Terms and conditions

- Guarantee only valid for products bought direct from Abcam or one of our authorized distributors