


## Product datasheet

# Anti-Ferritin Light Chain antibody ab69090

★★★★★ [34 Abreviews](#) [78 References](#) [1 Image](#)

### Overview

---

<b>Product name</b>	Anti-Ferritin Light Chain antibody
<b>Description</b>	Rabbit polyclonal to Ferritin Light Chain
<b>Host species</b>	Rabbit
<b>Specificity</b>	From Jan 2024, QC testing of replenishment batches of this polyclonal changed. All tested and expected application and reactive species combinations are still covered by our Abcam product promise. However, we no longer test all applications. For more information on a specific batch, please contact our Scientific Support who will be happy to help.
<b>Tested applications</b>	<b>Suitable for:</b> IHC-FoFr, WB <b>Unsuitable for:</b> ICC/IF
<b>Species reactivity</b>	<b>Reacts with:</b> Mouse, Rat, Human <b>Predicted to work with:</b> Dog, Orangutan 
<b>Immunogen</b>	Synthetic peptide corresponding to Human Ferritin Light Chain aa 150 to the C-terminus (C terminal) conjugated to keyhole limpet haemocyanin. (Peptide available as <a href="#">ab69089</a> )
<b>General notes</b>	<p>The Life Science industry has been in the grips of a reproducibility crisis for a number of years. Abcam is leading the way in addressing this with our range of recombinant monoclonal antibodies and knockout edited cell lines for gold-standard validation. Please check that this product meets your needs before purchasing.</p> <p>If you have any questions, special requirements or concerns, please send us an inquiry and/or contact our Support team ahead of purchase. Recommended alternatives for this product can be found below, along with publications, customer reviews and Q&amp;As</p>

### Properties

---

<b>Form</b>	Liquid
<b>Storage instructions</b>	Shipped at 4°C. Store at +4°C short term (1-2 weeks). Upon delivery aliquot. Store at -20°C or -80°C. Avoid freeze / thaw cycle.
<b>Storage buffer</b>	pH: 7.40 Preservative: 0.02% Sodium azide Constituent: PBS

Batches of this product that have a concentration < 1mg/ml may have BSA added as a stabilising

agent. If you would like information about the formulation of a specific lot, please contact our scientific support team who will be happy to help.

**Purity** Immunogen affinity purified  
**Clonality** Polyclonal  
**Isotype** IgG

## Applications

**The Abpromise guarantee** Our **Abpromise guarantee** covers the use of ab69090 in the following tested applications. The application notes include recommended starting dilutions; optimal dilutions/concentrations should be determined by the end user.

Application	Abreviews	Notes
IHC-FoFr	★★★★★ (1)	Use a concentration of 1 µg/ml.
WB	★★★★★ (21)	Use a concentration of 0.5 - 1 µg/ml. Detects a band of approximately 20-21 kDa (predicted molecular weight: 19 kDa).

**Application notes** Is unsuitable for ICC/IF.

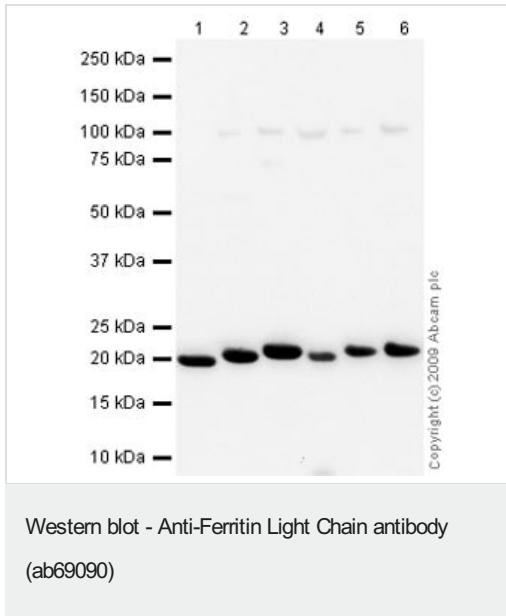
## Target

**Function** Stores iron in a soluble, non-toxic, readily available form. Important for iron homeostasis. Iron is taken up in the ferrous form and deposited as ferric hydroxides after oxidation. Also plays a role in delivery of iron to cells. Mediates iron uptake in capsule cells of the developing kidney.

**Involvement in disease** Defects in FTL are the cause of hereditary hyperferritinemia-cataract syndrome (HHCS) [MIM:600886]. It is an autosomal dominant disease characterized by early-onset bilateral cataract. Affected patients have elevated level of circulating ferritin. HHCS is caused by mutations in the iron responsive element (IRE) of the FTL gene.  
Defects in FTL are the cause of neurodegeneration with brain iron accumulation type 3 (NBIA3) [MIM:606159]; also known as adult-onset basal ganglia disease. It is a movement disorder with heterogeneous presentations starting in the fourth to sixth decade. It is characterized by a variety of neurological signs including parkinsonism, ataxia, corticospinal signs, mild nonprogressive cognitive deficit and episodic psychosis. It is linked with decreased serum ferritin levels.

**Sequence similarities** Belongs to the ferritin family.  
Contains 1 ferritin-like diiron domain.

## Images



**All lanes** : Anti-Ferritin Light Chain antibody (ab69090) at 1 µg/ml

**Lane 1** : Human liver tissue lysate - total protein ([ab29889](#))

**Lane 2** : Liver (Rat) Tissue Lysate

**Lane 3** : Mouse spleen tissue lysate - total protein ([ab29293](#))

**Lane 4** : Testis (Rat) Tissue Lysate - normal tissue ([ab29388](#))

**Lane 5** : Liver (Mouse) Tissue Lysate

**Lane 6** : Ovary (Mouse) Tissue Lysate

Lysates/proteins at 10 µg per lane.

#### Secondary

**All lanes** : Goat polyclonal to Rabbit IgG - H&L - Pre-Adsorbed (HRP) at 1/3000 dilution

Performed under reducing conditions.

**Predicted band size:** 19 kDa

**Observed band size:** 20 kDa

**Please note:** All products are "FOR RESEARCH USE ONLY. NOT FOR USE IN DIAGNOSTIC PROCEDURES"

#### Our Abpromise to you: Quality guaranteed and expert technical support

- Replacement or refund for products not performing as stated on the datasheet
- Valid for 12 months from date of delivery
- Response to your inquiry within 24 hours
- We provide support in Chinese, English, French, German, Japanese and Spanish
- Extensive multi-media technical resources to help you
- We investigate all quality concerns to ensure our products perform to the highest standards

If the product does not perform as described on this datasheet, we will offer a refund or replacement. For full details of the Abpromise, please visit <https://www.abcam.com/abpromise> or contact our technical team.

#### Terms and conditions

- Guarantee only valid for products bought direct from Abcam or one of our authorized distributors