




## Product datasheet

# Anti-FGF13 antibody [N235/22] ab186300

[1 References](#) [2 Images](#)

### Overview

<b>Product name</b>	Anti-FGF13 antibody [N235/22]
<b>Description</b>	Mouse monoclonal [N235/22] to FGF13
<b>Host species</b>	Mouse
<b>Specificity</b>	ab186300 will not recognize isoforms 2, 3, 4 or 5 of human FGF13. It cross-reacts with FGF12 and FGF14. It has 100% identity with human, mouse and rat FGF12; 94% identity with human, mouse and rat FGF14; 81% identity to human and mouse FGF11.
<b>Tested applications</b>	<b>Suitable for:</b> WB, ICC/IF
<b>Species reactivity</b>	<b>Reacts with:</b> Rat, Human <b>Predicted to work with:</b> Xenopus laevis, Orangutan 
<b>Immunogen</b>	Synthetic peptide corresponding to Human FGF13 aa 1-100 (N terminal). Database link: <a href="#">Q92913</a>  <a href="#">Run BLAST with</a>  <a href="#">Run BLAST with</a>
<b>Positive control</b>	WB: Rat brain lysate. ICC/IF: SK-N-BE cells.
<b>General notes</b>	1µg/mL of ab186300 was sufficient for detection of FGF13 in 20 µg of rat brain lysate by colorimetric immunoblot analysis using Goat anti-mouse IgG:HRP as the secondary antibody.  The clone number has been updated from S235-22 to N235/22, both clone numbers name the same antibody clone.  The Life Science industry has been in the grips of a reproducibility crisis for a number of years. Abcam is leading the way in addressing this with our range of recombinant monoclonal antibodies and knockout edited cell lines for gold-standard validation. Please check that this product meets your needs before purchasing.  If you have any questions, special requirements or concerns, please send us an inquiry and/or contact our Support team ahead of purchase. Recommended alternatives for this product can be found below, along with publications, customer reviews and Q&As

### Properties

<b>Form</b>	Liquid
<b>Storage instructions</b>	Shipped at 4°C. Store at +4°C short term (1-2 weeks). Upon delivery aliquot. Store at -20°C long term. Avoid freeze / thaw cycle.
<b>Storage buffer</b>	Preservative: 0.1% Sodium azide

	Constituents: 50% Glycerol (glycerin, glycerine), PBS
<b>Purity</b>	Protein G purified
<b>Clonality</b>	Monoclonal
<b>Clone number</b>	N235/22
<b>Isotype</b>	IgG2b

## Applications

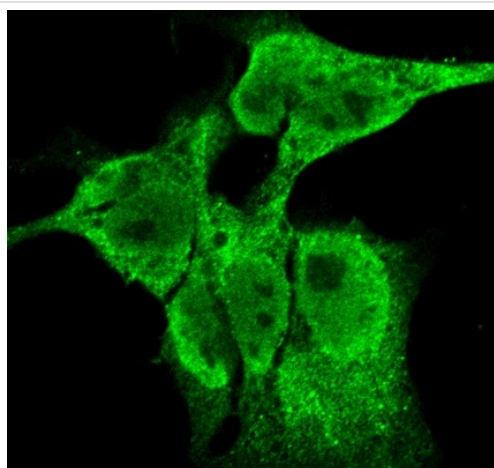
**The Abpromise guarantee** Our **Abpromise guarantee** covers the use of ab186300 in the following tested applications. The application notes include recommended starting dilutions; optimal dilutions/concentrations should be determined by the end user.

Application	Abreviews	Notes
<b>WB</b>		1/1000. Predicted molecular weight: 28 kDa.
<b>ICC/IF</b>		Use at an assay dependent concentration.

## Target

<b>Function</b>	Probably involved in nervous system development and function.
<b>Tissue specificity</b>	Nervous system.
<b>Sequence similarities</b>	Belongs to the heparin-binding growth factors family.

## Images



Immunocytochemistry/ Immunofluorescence - Anti-FGF13 antibody [N235/22] (ab186300)

SK-N-BE (Human neuroblastoma cell line) cells stained for FGF13 using ab186300 at a dilution of 1/100 (1 hour at RT) in ICC/IF.

Secondary Antibody: Goat Anti-Mouse ATTO 488 at 1:100 for 1 hour at RT.

Cells were fixed with 4% formaldehyde for 15 minutes at RT.

**kDa MW**

75

50

37

25



Western blot - Anti-FGF13 antibody [N235/22]  
(ab186300)

Anti-FGF13 antibody [N235/22] (ab186300) at 1/200 dilution + Rat  
brain membrane lysate at 15 µg

#### **Secondary**

Goat Anti-Mouse IgG: HRP at 1/1000 dilution

Developed using the ECL technique.

**Predicted band size:** 28 kDa

**Exposure time:** 6 minutes

**Block:** 2% BSA and 2% skimmed milk in 1X TBST.

Incubated with primary antibody for 16 hours at 4°C.

Incubated with secondary antibody for 1 hour at RT.

**Please note:** All products are "FOR RESEARCH USE ONLY. NOT FOR USE IN DIAGNOSTIC PROCEDURES"

#### **Our Abpromise to you: Quality guaranteed and expert technical support**

- Replacement or refund for products not performing as stated on the datasheet
- Valid for 12 months from date of delivery
- Response to your inquiry within 24 hours
- We provide support in Chinese, English, French, German, Japanese and Spanish
- Extensive multi-media technical resources to help you
- We investigate all quality concerns to ensure our products perform to the highest standards

If the product does not perform as described on this datasheet, we will offer a refund or replacement. For full details of the Abpromise, please visit <https://www.abcam.com/abpromise> or contact our technical team.

#### **Terms and conditions**

- Guarantee only valid for products bought direct from Abcam or one of our authorized distributors