

Product datasheet

Anti-FGF2 antibody [EP1735] ab92337

Recombinant **RabMAb**

★★★★☆ **2 Abreviews** **16 References** [8 Images](#)

Overview

Product name	Anti-FGF2 antibody [EP1735]
Description	Rabbit monoclonal [EP1735] to FGF2
Host species	Rabbit
Tested applications	Suitable for: WB, IP, IHC-P, Sandwich ELISA
Species reactivity	Reacts with: Human
Immunogen	Synthetic peptide within Human FGF2 aa 100-200. The exact sequence is proprietary.
Positive control	WB: K-562, and HeLa lysates. IHC-P: human breast, prostate and cerebrum tissue. IP: HeLa cells.
General notes	<p>This product is a recombinant monoclonal antibody, which offers several advantages including:</p> <ul style="list-style-type: none"> - High batch-to-batch consistency and reproducibility - Improved sensitivity and specificity - Long-term security of supply - Animal-free production <p>For more information see here.</p> <p>Our RabMAb[®] technology is a patented hybridoma-based technology for making rabbit monoclonal antibodies. For details on our patents, please refer to RabMAb[®] patents.</p> <p>Mouse, Rat: We have preliminary internal testing data to indicate this antibody may not react with these species. Please contact us for more information.</p>

Properties

Form	Liquid
Storage instructions	Shipped at 4°C. Upon delivery aliquot and store at -20°C. Avoid freeze / thaw cycles.
Storage buffer	<p>pH: 7.20</p> <p>Preservative: 0.01% Sodium azide</p> <p>Constituents: 59% PBS, 40% Glycerol (glycerin, glycerine), 0.05% BSA</p>
Purity	Protein A purified
Clonality	Monoclonal
Clone number	EP1735

Isotype

IgG

Applications

The Abpromise guarantee

Our **Abpromise guarantee** covers the use of ab92337 in the following tested applications.

The application notes include recommended starting dilutions; optimal dilutions/concentrations should be determined by the end user.

Application	Abreviews	Notes
WB	★★★★★ (1)	1/1000 - 1/10000. Predicted molecular weight: 31 kDa.
IP		1/10 - 1/100.
IHC-P	★★★★★ (1)	1/2400. Perform heat mediated antigen retrieval using ab93684 (Tris/EDTA buffer, pH 9.0).
Sandwich ELISA		Use a concentration of 0.5 µg/ml. For sandwich ELISA, use this antibody as Detection at 0.5 µg/ml with Mouse monoclonal [AS24] to FGF basic (ab17279) as Capture.

Target

Function

Plays an important role in the regulation of cell survival, cell division, angiogenesis, cell differentiation and cell migration. Functions as potent mitogen in vitro. Can induce angiogenesis (PubMed:23469107).

Tissue specificity

Expressed in granulosa and cumulus cells. Expressed in hepatocellular carcinoma cells, but not in non-cancerous liver tissue.

Sequence similarities

Belongs to the heparin-binding growth factors family.

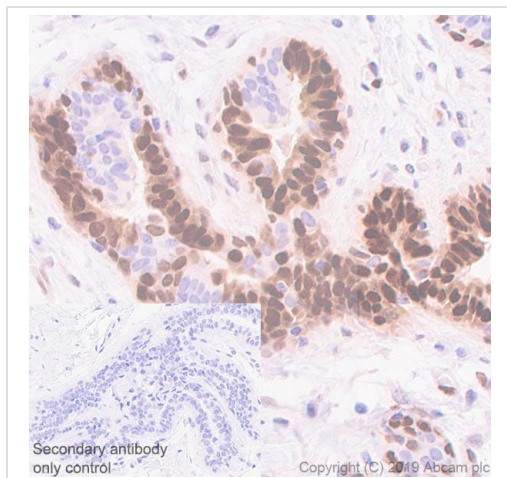
Post-translational modifications

Phosphorylation at Tyr-215 regulates FGF2 unconventional secretion.
Several N-termini starting at positions 94, 125, 126, 132, 143 and 162 have been identified by direct sequencing.

Cellular localization

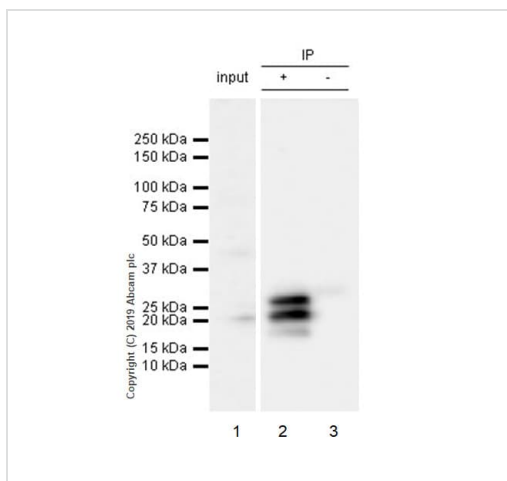
Secreted. Nucleus. Exported from cells by an endoplasmic reticulum (ER)/Golgi-independent mechanism. Unconventional secretion of FGF2 occurs by direct translocation across the plasma membrane. Binding of exogenous FGF2 to FGFR facilitates endocytosis followed by translocation of FGF2 across endosomal membrane into the cytosol. Nuclear import from the cytosol requires the classical nuclear import machinery, involving proteins KPNA1 and KPNB1, as well as CEP57.

Images



Immunohistochemistry (Formalin/PFA-fixed paraffin-embedded sections) - Anti-FGF2 antibody [EP1735] (ab92337)

Immunohistochemistry (Formalin/PFA-fixed paraffin-embedded sections) analysis of human breast tissue sections labeling FGF2 with Purified ab92337 at 1:2400 dilution (0.51 µg/ml). Perform heat mediated antigen retrieval using [ab93684](#) (Tris/EDTA buffer, pH 9.0). Purified ImmunoHistoProbe one step HRP Polymer (ready to use) was used for detection. Negative control: PBS instead of the primary antibody. Hematoxylin was used as a counterstain.



Immunoprecipitation - Anti-FGF2 antibody [EP1735] (ab92337)

ab92337 (Purified) at 1:70 dilution (2 µg) immunoprecipitating FGF2 in HeLa whole cell lysate.

Lane 1 (input): HeLa (Human cervix adenocarcinoma epithelial cell) whole cell lysate 10 µg

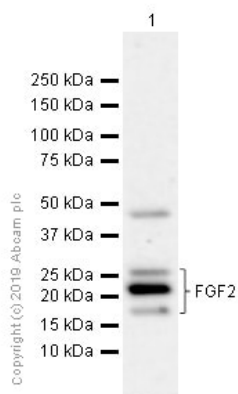
Lane 2 (+): ab92337 & HeLa whole cell lysate

Lane 3 (-): Rabbit monoclonal IgG ([ab172730](#)) instead of ab92337 in HeLa whole cell lysate

For western blotting, VeriBlot for IP Detection Reagent (HRP)

([ab131366](#)) was used at 1:1000 dilution.

Blocking and diluting buffer: 5% NFDm/TBST.



Western blot - Anti-FGF2 antibody [EP1735]
(ab92337)

Anti-FGF2 antibody [EP1735] (ab92337) at 1/5000 dilution
(Purified) + HeLa (Human cervix adenocarcinoma epithelial cell)
whole cell lysates at 15 µg

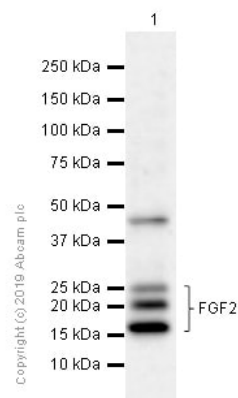
Secondary

Goat Anti-Rabbit IgG H&L (HRP) ([ab97051](#)) at 1/20000 dilution

Predicted band size: 31 kDa

Observed band size: 17-30 kDa

ab92337 recognizes 3 isoforms of FGF2



Western blot - Anti-FGF2 antibody [EP1735]
(ab92337)

Anti-FGF2 antibody [EP1735] (ab92337) at 1/1000 dilution
(Purified) + K-562 (Human chronic myelogenous leukemia
lymphoblast) whole cell lysates at 15 µg

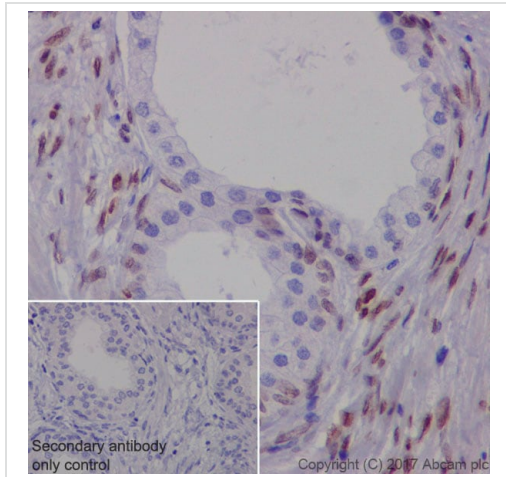
Secondary

Goat Anti-Rabbit IgG H&L (HRP) ([ab97051](#)) at 1/20000 dilution

Predicted band size: 31 kDa

Observed band size: 17-30 kDa

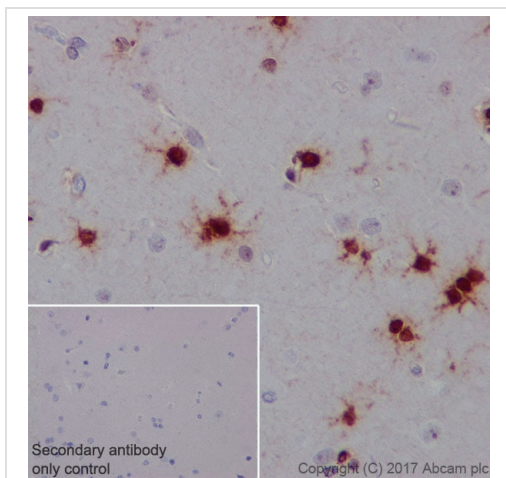
ab92337 recognizes 3 isoforms of FGF2



Immunohistochemistry (Formalin/PFA-fixed paraffin-embedded sections) - Anti-FGF2 antibody [EP1735] (ab92337)

Immunohistochemistry (Formalin/PFA-fixed paraffin-embedded sections) analysis of human prostate tissue sections labeling FGF2 with purified ab92337 at 1/1000 dilution (1.3 µg/ml). Heat mediated antigen retrieval was performed. ImmunoHistoProbe one step HRP Polymer (ready to use) was used as the secondary antibody.

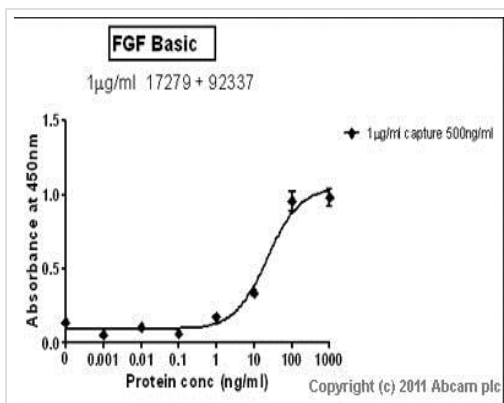
Negative control: PBS instead of the primary antibody.
Hematoxylin was used as a counterstain.



Immunohistochemistry (Formalin/PFA-fixed paraffin-embedded sections) - Anti-FGF2 antibody [EP1735] (ab92337)

Immunohistochemistry (Formalin/PFA-fixed paraffin-embedded sections) analysis of human cerebrum tissue sections labeling FGF2 with purified ab92337 at 1/1000 dilution (1.3 µg/ml). Heat mediated antigen retrieval was performed. ImmunoHistoProbe one step HRP Polymer (ready to use) was used as the secondary antibody.





Negative control: PBS instead of the primary antibody.
Hematoxylin was used as a counterstain.



Standard Curve for FGF basic (Analyte: **FGF basic protein (Active) (ab9596)**); dilution range 1pg/ml to 1µg/ml using Capture Antibody **Mouse monoclonal [AS24] to FGF basic (ab17279)** at 1µg/ml and Detector Antibody **Rabbit monoclonal [EP1735] to FGF basic (ab92337)** at 0.5µg/ml.

Sandwich ELISA - Anti-FGF2 antibody [EP1735]
(ab92337)

Why choose a recombinant antibody?

 <p>Research with confidence Consistent and reproducible results</p>	 <p>Long-term and scalable supply Recombinant technology</p>
 <p>Success from the first experiment Confirmed specificity</p>	 <p>Ethical standards compliant Animal-free production</p>

Anti-FGF2 antibody [EP1735] (ab92337)

Please note: All products are "FOR RESEARCH USE ONLY. NOT FOR USE IN DIAGNOSTIC PROCEDURES"

Our Abpromise to you: Quality guaranteed and expert technical support

- Replacement or refund for products not performing as stated on the datasheet
- Valid for 12 months from date of delivery
- Response to your inquiry within 24 hours
- We provide support in Chinese, English, French, German, Japanese and Spanish
- Extensive multi-media technical resources to help you

- We investigate all quality concerns to ensure our products perform to the highest standards

If the product does not perform as described on this datasheet, we will offer a refund or replacement. For full details of the Abpromise, please visit <https://www.abcam.com/abpromise> or contact our technical team.

Terms and conditions

- Guarantee only valid for products bought direct from Abcam or one of our authorized distributors