

Anti-FGF21 antibody ab137715

[1 References](#) [3 Images](#)

Overview

Product name	Anti-FGF21 antibody
Description	Rabbit polyclonal to FGF21
Host species	Rabbit
Tested applications	Suitable for: WB, IHC-P, ICC/IF
Species reactivity	Reacts with: Human
Immunogen	Synthetic peptide, corresponding to a region within amino acids 99-193 of the Human FGF21 protein (Q9NSA1).
Positive control	WB: 293T, A431, HeLa, HepG2, Molt-4, and Raji whole cell lysates. ICC/IF: HeLa cells. IHC-P: HS578T xenograft.
General notes	<p>The Life Science industry has been in the grips of a reproducibility crisis for a number of years. Abcam is leading the way in addressing this with our range of recombinant monoclonal antibodies and knockout edited cell lines for gold-standard validation. Please check that this product meets your needs before purchasing.</p> <p>If you have any questions, special requirements or concerns, please send us an inquiry and/or contact our Support team ahead of purchase. Recommended alternatives for this product can be found below, along with publications, customer reviews and Q&As</p>

Properties

Form	Liquid
Storage instructions	Shipped at 4°C. Upon delivery aliquot and store at -20°C or -80°C. Avoid repeated freeze / thaw cycles.
Storage buffer	<p>pH: 7.00</p> <p>Preservative: 0.025% Proclin 300</p> <p>Constituents: 78% PBS, 1% BSA, 20% Glycerol (glycerin, glycerine)</p>
Purity	Immunogen affinity purified
Clonality	Polyclonal
Isotype	IgG

Applications

The Abpromise guarantee

Our **Abpromise guarantee** covers the use of ab137715 in the following tested applications.

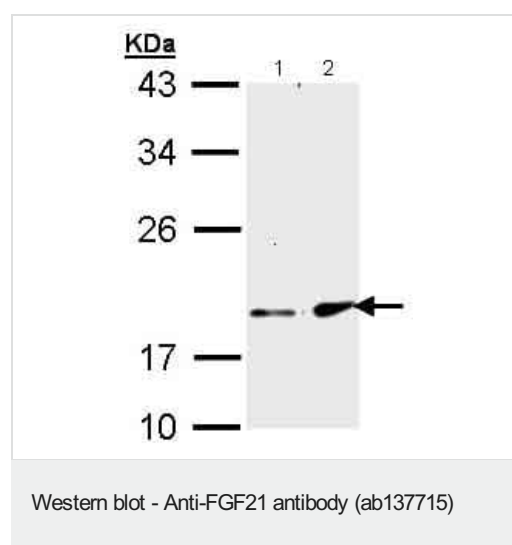
The application notes include recommended starting dilutions; optimal dilutions/concentrations should be determined by the end user.

Application	Abreviews	Notes
WB		1/500 - 1/3000. Predicted molecular weight: 22 kDa.
IHC-P		1/100 - 1/1000. Perform heat mediated antigen retrieval with citrate buffer pH 6 before commencing with IHC staining protocol.
ICC/IF		1/100 - 1/1000.

Target

Function	Stimulates glucose uptake in differentiated adipocytes via the induction of glucose transporter SLC2A1/GLUT1 expression (but not SLC2A4/GLUT4 expression). Activity requires the presence of KLB.
Sequence similarities	Belongs to the heparin-binding growth factors family.
Cellular localization	Secreted.

Images



All lanes : Anti-FGF21 antibody (ab137715) at 1/1000 dilution

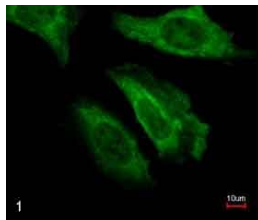
Lane 1 : HepG2 whole cell lysate

Lane 2 : Raji whole cell lysate

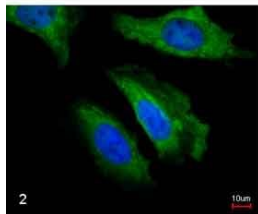
Lysates/proteins at 30 µg per lane.

Predicted band size: 22 kDa

12% SDS PAGE

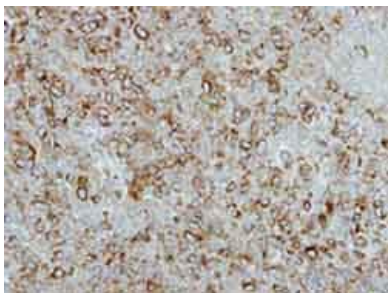


Merged with DNA probe



Immunofluorescence analysis of paraformaldehyde-fixed HeLa labelling FGF21 with ab137715 at 1/200 (panel 1) and co-stained with a DNA probe (panel 2).

Immunocytochemistry/ Immunofluorescence - Anti-FGF21 antibody (ab137715)



Immunohistochemical analysis of paraffin-embedded HS578T xenograft labelling FGF21 with ab137715 at 1/500.

Immunohistochemistry (Formalin/PFA-fixed paraffin-embedded sections) - Anti-FGF21 antibody (ab137715)

Please note: All products are "FOR RESEARCH USE ONLY. NOT FOR USE IN DIAGNOSTIC PROCEDURES"

Our Abpromise to you: Quality guaranteed and expert technical support

- Replacement or refund for products not performing as stated on the datasheet
- Valid for 12 months from date of delivery
- Response to your inquiry within 24 hours

- We provide support in Chinese, English, French, German, Japanese and Spanish
- Extensive multi-media technical resources to help you
- We investigate all quality concerns to ensure our products perform to the highest standards

If the product does not perform as described on this datasheet, we will offer a refund or replacement. For full details of the Abpromise, please visit <https://www.abcam.com/abpromise> or contact our technical team.

Terms and conditions

- Guarantee only valid for products bought direct from Abcam or one of our authorized distributors