


## Product datasheet

# Anti-FGF22 antibody ab74860

[2 References](#) [3 Images](#)

### Overview

---

<b>Product name</b>	Anti-FGF22 antibody
<b>Description</b>	Rabbit polyclonal to FGF22
<b>Host species</b>	Rabbit
<b>Tested applications</b>	<b>Suitable for:</b> WB, IHC-P, ICC/IF
<b>Species reactivity</b>	<b>Reacts with:</b> Human <b>Predicted to work with:</b> Mouse, Rat 
<b>Immunogen</b>	Synthetic peptide derived from internal sequence of human FGF22.
<b>Positive control</b>	Human ovary tissue. Extracts from Jurkat cells and HT-29 cells. MCF-7 cells.
<b>General notes</b>	<p>The Life Science industry has been in the grips of a reproducibility crisis for a number of years. Abcam is leading the way in addressing this with our range of recombinant monoclonal antibodies and knockout edited cell lines for gold-standard validation. Please check that this product meets your needs before purchasing.</p> <p>If you have any questions, special requirements or concerns, please send us an inquiry and/or contact our Support team ahead of purchase. Recommended alternatives for this product can be found below, along with publications, customer reviews and Q&amp;As</p>

### Properties

---

<b>Form</b>	Liquid
<b>Storage instructions</b>	Shipped at 4°C. Upon delivery aliquot and store at -20°C. Avoid freeze / thaw cycles.
<b>Storage buffer</b>	pH: 7.40 Preservative: 0.02% Sodium azide Constituents: 50% Glycerol (glycerin, glycerine), 0.87% Sodium chloride, PBS
<b>Purity</b>	Without Mg <sup>2+</sup> and Ca <sup>2+</sup> Immunogen affinity purified
<b>Clonality</b>	Polyclonal
<b>Isotype</b>	IgG

### Applications

## The Abpromise guarantee

Our **Abpromise guarantee** covers the use of ab74860 in the following tested applications.

The application notes include recommended starting dilutions; optimal dilutions/concentrations should be determined by the end user.

Application	Abreviews	Notes
WB		1/500 - 1/1000. Predicted molecular weight: 19 kDa.
IHC-P		1/50 - 1/100.
ICC/IF		1/500 - 1/1000.

## Target

### Function

May be involved in hair development.

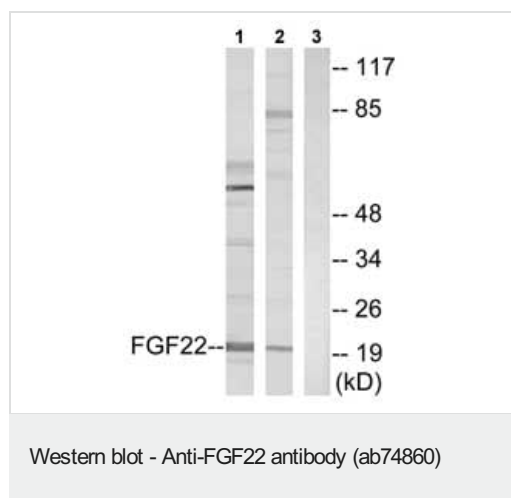
### Sequence similarities

Belongs to the heparin-binding growth factors family.

### Cellular localization

Secreted.

## Images



**All lanes** : Anti-FGF22 antibody (ab74860) at 1/500 dilution

**Lane 1** : Extracts from Jurkat cells

**Lane 2** : Extracts from HT-29 cells

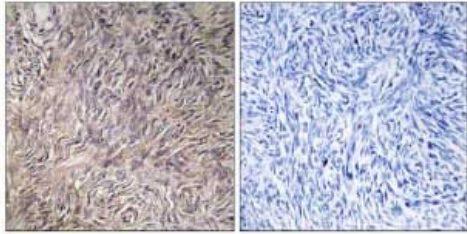
**Lane 3** : Extracts from Jurkat cells with immunising peptide at 5 µg

Lysates/proteins at 5 µg per lane.

**Predicted band size:** 19 kDa

**Observed band size:** 21 kDa

**Additional bands at:** 55 kDa, 85 kDa. We are unsure as to the identity of these extra bands.



Peptide - +

Immunohistochemistry (Formalin/PFA-fixed paraffin-embedded sections) - Anti-FGF22 antibody (ab74860)

Immunohistochemistry analysis of FGF22 in paraffin-embedded human ovary tissue using ab74860, at 1/50 dilution, in the presence (right panel) or absence (left panel) of immunising peptide.



Peptide - +

Immunocytochemistry/ Immunofluorescence - Anti-FGF22 antibody (ab74860)

Immunofluorescence analysis of FGF22 in MCF-7 cells using ab74860, at 1/500 dilution, in the presence (right panel) or absence (left panel) of immunising peptide.

**Please note:** All products are "FOR RESEARCH USE ONLY. NOT FOR USE IN DIAGNOSTIC PROCEDURES"

### Our Abpromise to you: Quality guaranteed and expert technical support

- Replacement or refund for products not performing as stated on the datasheet
- Valid for 12 months from date of delivery
- Response to your inquiry within 24 hours
- We provide support in Chinese, English, French, German, Japanese and Spanish
- Extensive multi-media technical resources to help you
- We investigate all quality concerns to ensure our products perform to the highest standards

If the product does not perform as described on this datasheet, we will offer a refund or replacement. For full details of the Abpromise, please visit <https://www.abcam.com/abpromise> or contact our technical team.

### Terms and conditions

- Guarantee only valid for products bought direct from Abcam or one of our authorized distributors