

# Anti-FGFR4 antibody [4FR6D3] ab234282

1 Image

### Overview

<b>Product name</b>	Anti-FGFR4 antibody [4FR6D3]
<b>Description</b>	Mouse monoclonal [4FR6D3] to FGFR4
<b>Host species</b>	Mouse
<b>Tested applications</b>	<b>Suitable for:</b> Flow Cyt
<b>Species reactivity</b>	<b>Reacts with:</b> Human
<b>Immunogen</b>	Tissue, cells or virus corresponding to FGFR4. NIH 3T3 cells transfected with full length human CD334
<b>Positive control</b>	Flow cyt: Caco-2 cells.
<b>General notes</b>	<p>The Life Science industry has been in the grips of a reproducibility crisis for a number of years. Abcam is leading the way in addressing this with our range of recombinant monoclonal antibodies and knockout edited cell lines for gold-standard validation. Please check that this product meets your needs before purchasing.</p> <p>If you have any questions, special requirements or concerns, please send us an inquiry and/or contact our Support team ahead of purchase. Recommended alternatives for this product can be found below, along with publications, customer reviews and Q&amp;As</p>

### Properties

<b>Form</b>	Liquid
<b>Storage instructions</b>	Shipped at 4°C. Store at +4°C short term (1-2 weeks). Upon delivery aliquot. Store at -20°C long term. Avoid freeze / thaw cycle.
<b>Storage buffer</b>	<p>pH: 7.40</p> <p>Preservative: 0.0975% Sodium azide</p> <p>Constituent: PBS</p>
<b>Purity</b>	Protein A purified
<b>Purification notes</b>	> 95% (by SDS-PAGE).
<b>Clonality</b>	Monoclonal
<b>Clone number</b>	4FR6D3
<b>Isotype</b>	IgG1
<b>Light chain type</b>	kappa

## Applications

### The Abpromise guarantee

Our **Abpromise guarantee** covers the use of ab234282 in the following tested applications.

The application notes include recommended starting dilutions; optimal dilutions/concentrations should be determined by the end user.

Application	Abreviews	Notes
Flow Cyt		Use a concentration of 2 - 6 µg/ml.

## Target

### Function

Receptor for acidic fibroblast growth factor. Does not bind to basic fibroblast growth factor. Binds FGF19.

### Tissue specificity

Expressed in gastrointestinal epithelial cells, pancreas, and gastric and pancreatic cancer cell lines.

### Sequence similarities

Belongs to the protein kinase superfamily. Tyr protein kinase family. Fibroblast growth factor receptor subfamily.  
Contains 3 Ig-like C2-type (immunoglobulin-like) domains.  
Contains 1 protein kinase domain.

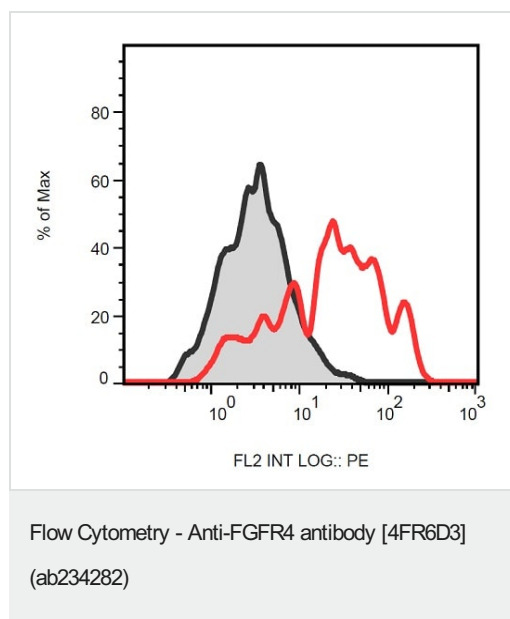
### Post-translational modifications

Glycosylated.  
Phosphorylated on tyrosine residue (By similarity). Phosphorylation requires the presence of a functional (phosphorylated) FGFR1 and not necessarily by means of FGFR heterodimerization.

### Cellular localization

Membrane. Isoform 2 may be secreted.

## Images



Flow cytometric analysis of Caco-2 cells using ab234282 (red) compared to a negative control (black).

**Please note:** All products are "FOR RESEARCH USE ONLY. NOT FOR USE IN DIAGNOSTIC PROCEDURES"

### **Our Abpromise to you: Quality guaranteed and expert technical support**

---

- Replacement or refund for products not performing as stated on the datasheet
- Valid for 12 months from date of delivery
- Response to your inquiry within 24 hours
  
- We provide support in Chinese, English, French, German, Japanese and Spanish
- Extensive multi-media technical resources to help you
- We investigate all quality concerns to ensure our products perform to the highest standards

If the product does not perform as described on this datasheet, we will offer a refund or replacement. For full details of the Abpromise, please visit <https://www.abcam.com/abpromise> or contact our technical team.

### **Terms and conditions**

---

- Guarantee only valid for products bought direct from Abcam or one of our authorized distributors