

Anti-FGFR4 antibody ab119378

[5 References](#) [1 Image](#)

Overview

Product name	Anti-FGFR4 antibody
Description	Rabbit polyclonal to FGFR4
Host species	Rabbit
Tested applications	Suitable for: WB
Species reactivity	Reacts with: Rat
Immunogen	Synthetic peptide conjugated to KLH, surrounding amino acids 45-49 (L-T-V-A-L) of Human FGFR4.
Positive control	Rat liver and brain tissues.
General notes	<p>The Life Science industry has been in the grips of a reproducibility crisis for a number of years. Abcam is leading the way in addressing this with our range of recombinant monoclonal antibodies and knockout edited cell lines for gold-standard validation. Please check that this product meets your needs before purchasing.</p> <p>If you have any questions, special requirements or concerns, please send us an inquiry and/or contact our Support team ahead of purchase. Recommended alternatives for this product can be found below, along with publications, customer reviews and Q&As</p>

Properties

Form	Liquid
Storage instructions	Shipped at 4°C. Store at -20°C. Stable for 12 months at -20°C.
Storage buffer	<p>pH: 7.40</p> <p>Preservative: 0.02% Sodium azide</p> <p>Constituents: 48% PBS, 50% Glycerol (glycerin, glycerine), 0.88% Sodium chloride</p> <p>without Mg²⁺ and Ca²⁺</p>
Purity	Immunogen affinity purified
Clonality	Polyclonal
Isotype	IgG

Applications

The Abpromise guarantee

Our **Abpromise guarantee** covers the use of ab119378 in the following tested applications.

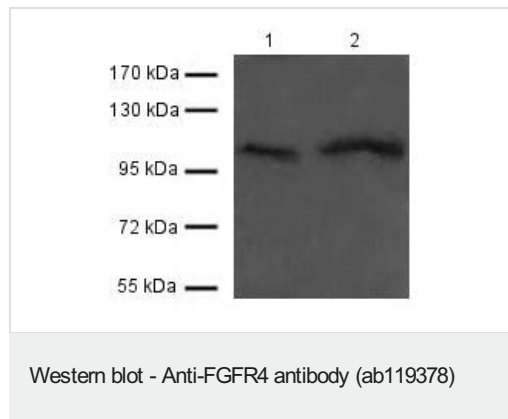
The application notes include recommended starting dilutions; optimal dilutions/concentrations should be determined by the end user.

Application	Abreviews	Notes
WB		1/500 - 1/1000. Detects a band of approximately 110 kDa (predicted molecular weight: 88 kDa).

Target

Function	Receptor for acidic fibroblast growth factor. Does not bind to basic fibroblast growth factor. Binds FGF19.
Tissue specificity	Expressed in gastrointestinal epithelial cells, pancreas, and gastric and pancreatic cancer cell lines.
Sequence similarities	Belongs to the protein kinase superfamily. Tyr protein kinase family. Fibroblast growth factor receptor subfamily. Contains 3 Ig-like C2-type (immunoglobulin-like) domains. Contains 1 protein kinase domain.
Post-translational modifications	Glycosylated. Phosphorylated on tyrosine residue (By similarity). Phosphorylation requires the presence of a functional (phosphorylated) FGFR1 and not necessarily by means of FGFR heterodimerization.
Cellular localization	Membrane. Isoform 2 may be secreted.

Images



All lanes : Anti-FGFR4 antibody (ab119378) at 1/500 dilution

Lane 1 : Rat liver lysate

Lane 2 : Rat brain lysate

Predicted band size: 88 kDa

Observed band size: 110 kDa

Please note: All products are "FOR RESEARCH USE ONLY. NOT FOR USE IN DIAGNOSTIC PROCEDURES"

Our Abpromise to you: Quality guaranteed and expert technical support

- Replacement or refund for products not performing as stated on the datasheet
- Valid for 12 months from date of delivery
- Response to your inquiry within 24 hours

- We provide support in Chinese, English, French, German, Japanese and Spanish
- Extensive multi-media technical resources to help you
- We investigate all quality concerns to ensure our products perform to the highest standards

If the product does not perform as described on this datasheet, we will offer a refund or replacement. For full details of the Abpromise, please visit <https://www.abcam.com/abpromise> or contact our technical team.

Terms and conditions

- Guarantee only valid for products bought direct from Abcam or one of our authorized distributors