

Product datasheet

Anti-FGL1 antibody [EPR9936] ab168373

Recombinant RabMAb

2 Images

Overview

Product name	Anti-FGL1 antibody [EPR9936]
Description	Rabbit monoclonal [EPR9936] to FGL1
Host species	Rabbit
Tested applications	Suitable for: WB Unsuitable for: Flow Cyt, ICC/IF, IHC-P or IP
Species reactivity	Reacts with: Human
Immunogen	Synthetic peptide corresponding to Human FGL1. (Peptide available as ab158442)
Positive control	Human fetal liver and HepG2 lysates.
General notes	This product is a recombinant monoclonal antibody, which offers several advantages including: <ul style="list-style-type: none"> - High batch-to-batch consistency and reproducibility - Improved sensitivity and specificity - Long-term security of supply - Animal-free production For more information see here . Our RabMAb [®] technology is a patented hybridoma-based technology for making rabbit monoclonal antibodies. For details on our patents, please refer to RabMAb[®] patents . Mouse, Rat: We have preliminary internal testing data to indicate this antibody may not react with these species. Please contact us for more information.

Properties

Form	Liquid
Storage instructions	Shipped at 4°C. Store at +4°C short term (1-2 weeks). Upon delivery aliquot. Store at -20°C long term.
Storage buffer	pH: 7.2 Preservative: 0.01% Sodium azide Constituents: 9% PBS, 40% Glycerol (glycerin, glycerine), 0.05% BSA, 50% Tissue culture supernatant
Purity	Protein A purified

Clonality	Monoclonal
Clone number	EPR9936
Isotype	IgG

Applications

The Abpromise guarantee Our **Abpromise guarantee** covers the use of ab168373 in the following tested applications. The application notes include recommended starting dilutions; optimal dilutions/concentrations should be determined by the end user.

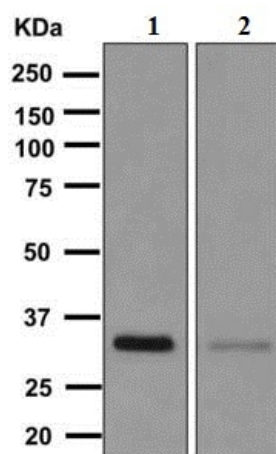
Application	Abreviews	Notes
WB		1/1000 - 1/5000. Predicted molecular weight: 36 kDa. Can be blocked with Recombinant Human FGL1 protein (ab158442) .

Application notes Is unsuitable for Flow Cyt, ICC/IF, IHC-P or IP.

Target

Function	Has hepatocyte mitogenic activity.
Tissue specificity	Liver specific.
Sequence similarities	Contains 1 fibrinogen C-terminal domain.
Cellular localization	Secreted.

Images



Western blot - Anti-FGL1 antibody [EPR9936] (ab168373)

All lanes : Anti-FGL1 antibody [EPR9936] (ab168373) at 1/1000 dilution

Lane 1 : Human fetal liver lysates

Lane 2 : HepG2 lysates

Lysates/proteins at 10 µg per lane.

Predicted band size: 36 kDa

Note: The primary antibody was diluted in 1% BSA.

Why choose a recombinant antibody?



Research with confidence
Consistent and reproducible results



Long-term and scalable supply
Recombinant technology



Success from the first experiment
Confirmed specificity



Ethical standards compliant
Animal-free production

Anti-FGL1 antibody [EPR9936] (ab168373)

Please note: All products are "FOR RESEARCH USE ONLY. NOT FOR USE IN DIAGNOSTIC PROCEDURES"

Our Abpromise to you: Quality guaranteed and expert technical support

- Replacement or refund for products not performing as stated on the datasheet
- Valid for 12 months from date of delivery
- Response to your inquiry within 24 hours
- We provide support in Chinese, English, French, German, Japanese and Spanish
- Extensive multi-media technical resources to help you
- We investigate all quality concerns to ensure our products perform to the highest standards

If the product does not perform as described on this datasheet, we will offer a refund or replacement. For full details of the Abpromise, please visit <https://www.abcam.com/abpromise> or contact our technical team.

Terms and conditions

- Guarantee only valid for products bought direct from Abcam or one of our authorized distributors