

### Anti-FHIT antibody - C-terminal ab181004

2 Images

#### Overview

<b>Product name</b>	Anti-FHIT antibody - C-terminal
<b>Description</b>	Rabbit polyclonal to FHIT - C-terminal
<b>Host species</b>	Rabbit
<b>Tested applications</b>	<b>Suitable for:</b> ICC/IF, WB
<b>Species reactivity</b>	<b>Reacts with:</b> Human
<b>Immunogen</b>	Synthetic peptide corresponding to Human FHIT (C terminal). Peptide corresponds to 18 amino acids. Database link: <a href="#">NP_002003</a>
<b>Positive control</b>	HeLa cells and cell lysate.
<b>General notes</b>	<p>The Life Science industry has been in the grips of a reproducibility crisis for a number of years. Abcam is leading the way in addressing this with our range of recombinant monoclonal antibodies and knockout edited cell lines for gold-standard validation. Please check that this product meets your needs before purchasing.</p> <p>If you have any questions, special requirements or concerns, please send us an inquiry and/or contact our Support team ahead of purchase. Recommended alternatives for this product can be found below, along with publications, customer reviews and Q&amp;As</p>

#### Properties

<b>Form</b>	Liquid
<b>Storage instructions</b>	Shipped at 4°C. Store at +4°C short term (1-2 weeks). Upon delivery aliquot. Store at -20°C long term. Avoid freeze / thaw cycle.
<b>Storage buffer</b>	pH: 7.2 Preservative: 0.02% Sodium azide Constituent: 99% PBS
<b>Purity</b>	Immunogen affinity purified
<b>Clonality</b>	Polyclonal
<b>Isotype</b>	IgG

#### Applications

## The Abpromise guarantee

Our **Abpromise guarantee** covers the use of ab181004 in the following tested applications.

The application notes include recommended starting dilutions; optimal dilutions/concentrations should be determined by the end user.

Application	Abreviews	Notes
ICC/IF		Use a concentration of 5 µg/ml.
WB		Use a concentration of 1 - 2 µg/ml. Predicted molecular weight: 17 kDa.

## Target

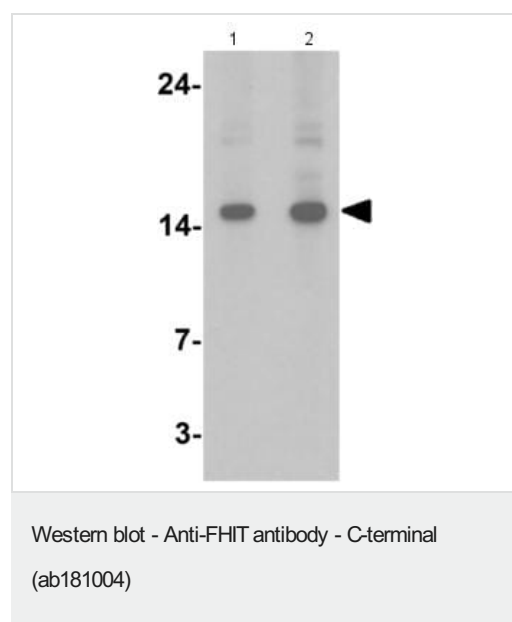
### Relevance

FHIT (fragile histidine triad) cleaves adenosine 5' PPP 5' A to yield AMP and ADP. Alterations and deletions of the FHIT gene are strongly linked to the genesis and establishment of human tumors of the lung, cervix, breast, colon, stomach and pancreas. In normal cells, FHIT may act as a tumor suppressor. FHIT physically associates with ubiquitin conjugating enzyme 9.

### Cellular localization

Cytoplasmic

## Images



**Lane 1** : Anti-FHIT antibody - C-terminal (ab181004) at 1 µg

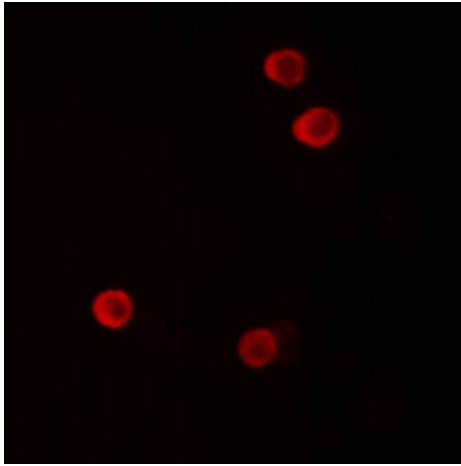
**Lane 2** : Anti-FHIT antibody - C-terminal (ab181004) at 2 µg

**All lanes** : HeLa cell lysate

Lysates/proteins at 15 µg per lane.

**Predicted band size:** 17 kDa

**Observed band size:** 15 kDa



Immunofluorescence analysis of HeLa cells, labeling FHIT using ab181004 at 5 µg/ml.

Immunocytochemistry/ Immunofluorescence - Anti-FHIT antibody - C-terminal (ab181004)

**Please note:** All products are "FOR RESEARCH USE ONLY. NOT FOR USE IN DIAGNOSTIC PROCEDURES"

### Our Abpromise to you: Quality guaranteed and expert technical support

---

- Replacement or refund for products not performing as stated on the datasheet
- Valid for 12 months from date of delivery
- Response to your inquiry within 24 hours
- We provide support in Chinese, English, French, German, Japanese and Spanish
- Extensive multi-media technical resources to help you
- We investigate all quality concerns to ensure our products perform to the highest standards

If the product does not perform as described on this datasheet, we will offer a refund or replacement. For full details of the Abpromise, please visit <https://www.abcam.com/abpromise> or contact our technical team.

### Terms and conditions

---

- Guarantee only valid for products bought direct from Abcam or one of our authorized distributors