


Product datasheet

Anti-FHL2 antibody ab12327

★★★★★ [3 Abreviews](#) [12 References](#) [2 Images](#)

Overview

Product name	Anti-FHL2 antibody
Description	Rabbit polyclonal to FHL2
Host species	Rabbit
Specificity	Reactivity with mouse FHL2 is unlikely owing to divergence of this ortholog from the peptide used for antibody production. The epitope recognized by ab1237 maps to a region between residues 175 and 225 of human Four and a Half LIM domains 2 using the numbering given in entry NP_963849.1 (GeneID 2274).
Tested applications	Suitable for: WB
Species reactivity	Reacts with: Human Predicted to work with: Chimpanzee, Rhesus monkey, Gorilla, Orangutan 
Immunogen	Synthetic peptide corresponding to Human FHL2 aa 175-225. Database link: Q14192 (Peptide available as ab119360)
Positive control	WB: U-2 OS and HeLa cell lysates; HeLa nuclear extract.
General notes	<p>The Life Science industry has been in the grips of a reproducibility crisis for a number of years. Abcam is leading the way in addressing this with our range of recombinant monoclonal antibodies and knockout edited cell lines for gold-standard validation. Please check that this product meets your needs before purchasing.</p> <p>If you have any questions, special requirements or concerns, please send us an inquiry and/or contact our Support team ahead of purchase. Recommended alternatives for this product can be found below, along with publications, customer reviews and Q&As</p>

Properties

Form	Liquid
Storage instructions	Shipped at 4°C. Upon delivery aliquot and store at -20°C. Avoid freeze / thaw cycles.
Storage buffer	pH: 7 Preservative: 0.1% Sodium azide Constituents: 0.021% PBS, 1.764% Sodium citrate, 1.815% Tris
Purity	Immunogen affinity purified
Purification notes	This antibody is affinity purified.

Clonality	Polyclonal
Isotype	IgG

Applications

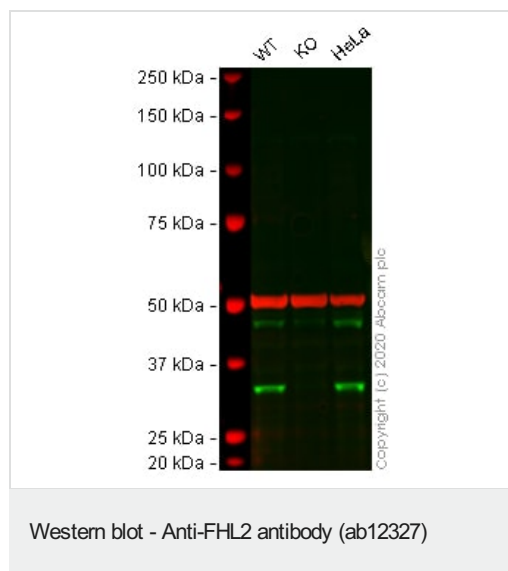
The Abpromise guarantee Our **Abpromise guarantee** covers the use of ab12327 in the following tested applications. The application notes include recommended starting dilutions; optimal dilutions/concentrations should be determined by the end user.

Application	Abreviews	Notes
WB		1/1000 - 1/10000. Detects a band of approximately 32 kDa (predicted molecular weight: 32 kDa).

Target

Function	May function as a molecular transmitter linking various signaling pathways to transcriptional regulation. Negatively regulates the transcriptional repressor E4F1 and may function in cell growth.
Tissue specificity	Expressed in skeletal muscle and heart.
Sequence similarities	Contains 4 LIM zinc-binding domains.
Domain	The third LIM zinc-binding mediates interaction with E4F1.
Cellular localization	Cytoplasm. Nucleus.

Images



All lanes : Anti-FHL2 antibody (ab12327) at 1/1000 dilution

Lane 1 : Wild-type U-2 OS cell lysate

Lane 2 : FHL2 knockout U-2 OS cell lysate

Lane 3 : HeLa cell lysate

Lysates/proteins at 40 µg per lane.

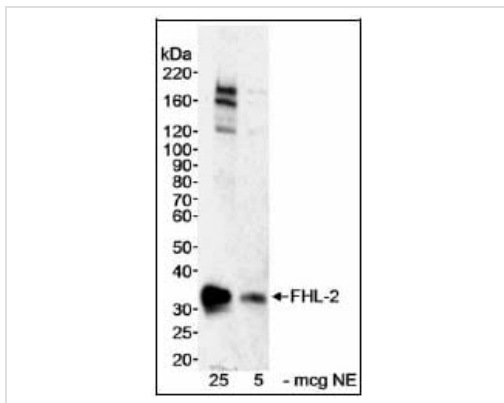
Performed under reducing conditions.

Predicted band size: 32 kDa

Observed band size: 32 kDa

Lanes 1 - 3: Merged signal (red and green). Green - ab12327 observed at 32 kDa. Red - loading control **ab7291** (Mouse anti-Alpha Tubulin [DM1A]) observed at 55kDa.

ab12327 was shown to react with FHL2 in wild-type U-2 OS cells in western blot with loss of signal observed in FHL2 knockout sample. Wild-type and FHL2 knockout U-2 OS cell lysates were subjected to SDS-PAGE. Membranes were blocked in 3% milk in TBS-T (0.1% Tween[®]) before incubation with ab12327 and **ab7291** (Mouse anti-Alpha Tubulin [DM1A]) overnight at 4°C at a 1 in 1000 dilution and a 1 in 20000 dilution respectively. Blots were incubated with Goat anti-Rabbit IgG H&L (IRDye[®] 800CW) preabsorbed (**ab216773**) and Goat anti-Mouse IgG H&L (IRDye[®] 680RD) preabsorbed (**ab216776**) secondary antibodies at 1 in 20000 dilution for 1 hour at room temperature before imaging.



Western blot - Anti-FHL2 antibody (ab12327)

Samples:

Nuclear extract (NE) from HeLa cells. *Antibody:* Affinity purified rabbit anti-FHL2 antibody ab12327 used at 0.3 µg/ml. *Detection:* Chemiluminescence with an exposure time of 5 minutes. Samples: Nuclear extract (NE) from HeLa cells. Antibody: Affinity purified rabbit anti-FHL2 antibody ab12327 used at 0.3 µg/ml. *Detection:* Chemiluminescence with an exposure time of 5 minutes.

Please note: All products are "FOR RESEARCH USE ONLY. NOT FOR USE IN DIAGNOSTIC PROCEDURES"

Our Abpromise to you: Quality guaranteed and expert technical support

- Replacement or refund for products not performing as stated on the datasheet
- Valid for 12 months from date of delivery
- Response to your inquiry within 24 hours
- We provide support in Chinese, English, French, German, Japanese and Spanish
- Extensive multi-media technical resources to help you
- We investigate all quality concerns to ensure our products perform to the highest standards

If the product does not perform as described on this datasheet, we will offer a refund or replacement. For full details of the Abpromise, please visit <https://www.abcam.com/abpromise> or contact our technical team.

Terms and conditions

- Guarantee only valid for products bought direct from Abcam or one of our authorized distributors