

# Anti-FHOD1 antibody ab73443

[7 References](#) [3 Images](#)

### Overview

<b>Product name</b>	Anti-FHOD1 antibody
<b>Description</b>	Mouse polyclonal to FHOD1
<b>Host species</b>	Mouse
<b>Tested applications</b>	<b>Suitable for:</b> WB, IHC-P
<b>Species reactivity</b>	<b>Reacts with:</b> Human
<b>Immunogen</b>	Recombinant full length protein within Human FHOD1. The exact immunogen sequence used to generate this antibody is proprietary information. If additional detail on the immunogen is needed to determine the suitability of the antibody for your needs, please <b><a href="#">contact</a></b> our Scientific Support team to discuss your requirements.
<b>Positive control</b>	K-562 cell lysate and FHOD1 transfected 293T cell lysate human spleen
<b>General notes</b>	<p>The Life Science industry has been in the grips of a reproducibility crisis for a number of years. Abcam is leading the way in addressing this with our range of recombinant monoclonal antibodies and knockout edited cell lines for gold-standard validation. Please check that this product meets your needs before purchasing.</p> <p>If you have any questions, special requirements or concerns, please send us an inquiry and/or contact our Support team ahead of purchase. Recommended alternatives for this product can be found below, along with publications, customer reviews and Q&amp;As</p>

### Properties

<b>Form</b>	Liquid
<b>Storage instructions</b>	Shipped at 4°C. Upon delivery aliquot and store at -20°C. Avoid freeze / thaw cycles.
<b>Storage buffer</b>	pH: 7.40 Constituent: PBS
<b>Purity</b>	Protein A purified
<b>Clonality</b>	Polyclonal
<b>Isotype</b>	IgG

### Applications

## The Abpromise guarantee

Our **Abpromise guarantee** covers the use of ab73443 in the following tested applications.

The application notes include recommended starting dilutions; optimal dilutions/concentrations should be determined by the end user.

Application	Abreviews	Notes
WB		1/500 - 1/1000. Predicted molecular weight: 127 kDa.
IHC-P		Use a concentration of 13 µg/ml.

## Target

### Function

Required for the assembly of F-actin structures, such as stress fibers. Depends on the Rho-ROCK cascade for its activity. Contributes to the coordination of microtubules with actin fibers and plays a role in cell elongation.

### Tissue specificity

Ubiquitous. Highly expressed in spleen.

### Sequence similarities

Belongs to the formin homology family.  
Contains 1 FH1 (formin homology 1) domain.  
Contains 1 FH2 (formin homology 2) domain.  
Contains 1 GBD/FH3 (Rho GTPase-binding/formin homology 3) domain.

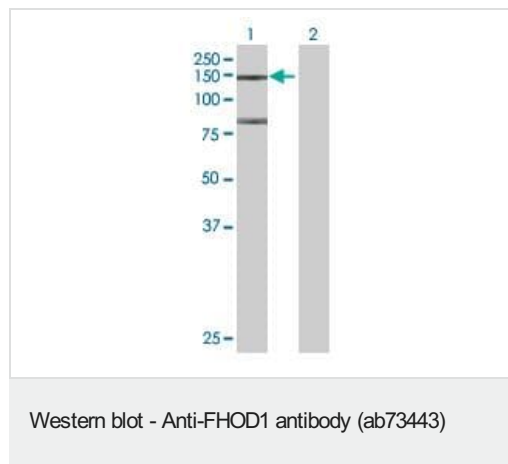
### Domain

Regulated by intramolecular binding to a C-terminal auto-inhibitory domain. Effector binding abolishes this interaction and activates the protein.

### Cellular localization

Cytoplasm. Cytoplasm > cytoskeleton. Predominantly cytoplasmic.

## Images



**All lanes :** Anti-FHOD1 antibody (ab73443) at 1/500 dilution

**Lane 1 :** FHOD1 transfected 293T cell lysate

**Lane 2 :** non-transfected lysate

Lysates/proteins at 25 µg per lane.

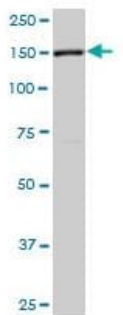
### Secondary

**All lanes :** goat anti-mouse IgG(H&L)-HRP conjugate at 1/2500 dilution

**Predicted band size:** 127 kDa

**Observed band size:** 145 kDa

**Additional bands at:** 80 kDa. We are unsure as to the identity of these extra bands.



Western blot - Anti-FHOD1 antibody (ab73443)

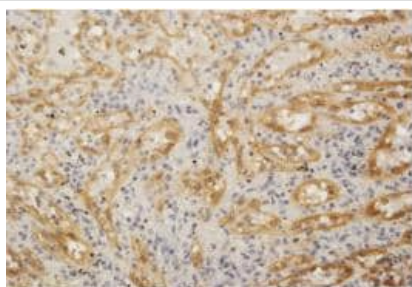
Anti-FHOD1 antibody (ab73443) at 1/500 dilution + K-562 cell lysate at 25 µg

#### Secondary

goat anti-mouse IgG (H&L)-HRP conjugate at 1/2500 dilution

**Predicted band size:** 127 kDa

**Observed band size:** 150 kDa



Immunohistochemistry (Formalin/PFA-fixed paraffin-embedded sections) - Anti-FHOD1 antibody (ab73443)

Immunoperoxidase staining of formalin-fixed paraffin-embedded human spleen using ab73443, at 3 µg/ml of purified version of the antibody.

**Please note:** All products are "FOR RESEARCH USE ONLY. NOT FOR USE IN DIAGNOSTIC PROCEDURES"

#### Our Abpromise to you: Quality guaranteed and expert technical support

- Replacement or refund for products not performing as stated on the datasheet
- Valid for 12 months from date of delivery
- Response to your inquiry within 24 hours
- We provide support in Chinese, English, French, German, Japanese and Spanish
- Extensive multi-media technical resources to help you
- We investigate all quality concerns to ensure our products perform to the highest standards

If the product does not perform as described on this datasheet, we will offer a refund or replacement. For full details of the Abpromise, please visit <https://www.abcam.com/abpromise> or contact our technical team.

#### Terms and conditions

- Guarantee only valid for products bought direct from Abcam or one of our authorized distributors