

## Product datasheet

# Anti-Fibrinogen beta chain antibody [EPR19765] ab193932

Recombinant RabMAb

[2 References](#) [5 Images](#)

### Overview

---

<b>Product name</b>	Anti-Fibrinogen beta chain antibody [EPR19765]
<b>Description</b>	Rabbit monoclonal [EPR19765] to Fibrinogen beta chain
<b>Host species</b>	Rabbit
<b>Tested applications</b>	<b>Suitable for:</b> WB, ICC/IF, IP
<b>Species reactivity</b>	<b>Reacts with:</b> Human
<b>Immunogen</b>	Full length native protein (purified) corresponding to Human Fibrinogen beta chain. Database link: <a href="#">P02675</a>
<b>Positive control</b>	WB: HepG2 whole cell lysate; Human plasma and fetal liver tissue lysate. ICC/IF: HepG2 cells. IP: HepG2 whole cell lysate.
<b>General notes</b>	<p>This product is a recombinant monoclonal antibody, which offers several advantages including:</p> <ul style="list-style-type: none"><li>- High batch-to-batch consistency and reproducibility</li><li>- Improved sensitivity and specificity</li><li>- Long-term security of supply</li><li>- Animal-free production</li></ul> <p>For more information <a href="#">see here</a>.</p> <p>Our RabMAb<sup>®</sup> technology is a patented hybridoma-based technology for making rabbit monoclonal antibodies. For details on our patents, please refer to <a href="#">RabMAb<sup>®</sup> patents</a>.</p>

### Properties

---

<b>Form</b>	Liquid
<b>Storage instructions</b>	Shipped at 4°C. Store at +4°C short term (1-2 weeks). Upon delivery aliquot. Store at -20°C long term. Avoid freeze / thaw cycle.
<b>Storage buffer</b>	pH: 7.2 Preservative: 0.01% Sodium azide Constituents: 0.05% BSA, 40% Glycerol (glycerin, glycerine), 59% PBS
<b>Purity</b>	Protein A purified
<b>Clonality</b>	Monoclonal

Clone number                   EPR19765  
Isotype                            IgG

## Applications

**The Abpromise guarantee**           Our **Abpromise guarantee** covers the use of ab193932 in the following tested applications.  
The application notes include recommended starting dilutions; optimal dilutions/concentrations should be determined by the end user.

Application	Abreviews	Notes
WB		1/1000. Detects a band of approximately 55 kDa (predicted molecular weight: 55 kDa).
ICC/IF		1/100.
IP		1/30.

## Target

**Function**                                   Fibrinogen has a double function: yielding monomers that polymerize into fibrin and acting as a cofactor in platelet aggregation.

**Involvement in disease**               Defects in FGB are a cause of congenital afibrinogenemia (CAFBN) [MIM:202400]. This rare autosomal recessive disorder is characterized by bleeding that varies from mild to severe and by complete absence or extremely low levels of plasma and platelet fibrinogen. Note=Patients with congenital fibrinogen abnormalities can manifest different clinical pictures. Some cases are clinically silent, some show a tendency toward bleeding and some show a predisposition for thrombosis with or without bleeding.

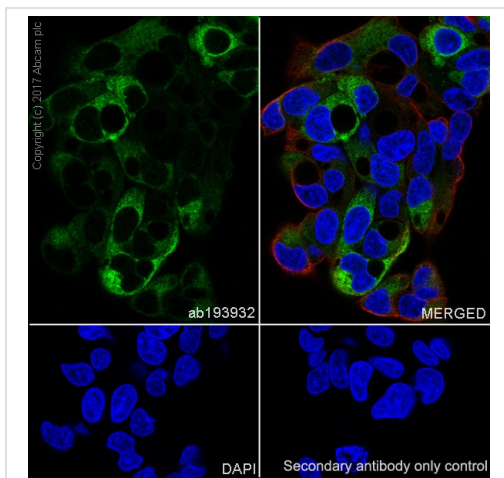
**Sequence similarities**                    Contains 1 fibrinogen C-terminal domain.

**Domain**                                     A long coiled coil structure formed by 3 polypeptide chains connects the central nodule to the C-terminal domains (distal nodules). The long C-terminal ends of the alpha chains fold back, contributing a fourth strand to the coiled coil structure.

**Post-translational modifications**    Conversion of fibrinogen to fibrin is triggered by thrombin, which cleaves fibrinopeptides A and B from alpha and beta chains, and thus exposes the N-terminal polymerization sites responsible for the formation of the soft clot. The soft clot is converted into the hard clot by factor XIIIa which catalyzes the epsilon-(gamma-glutamyl)lysine cross-linking between gamma chains (stronger) and between alpha chains (weaker) of different monomers.

**Cellular localization**                    Secreted.

## Images

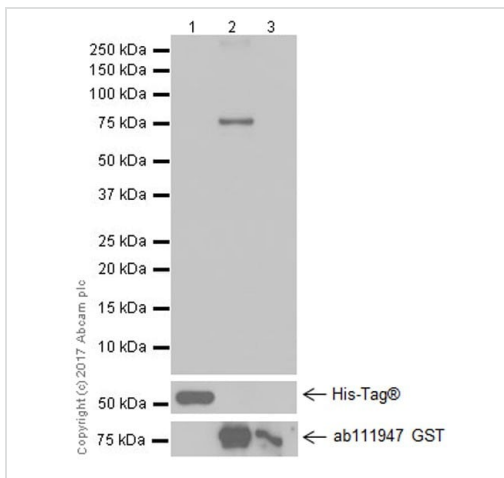


Immunocytochemistry/ Immunofluorescence - Anti-Fibrinogen beta chain antibody [EPR19765] (ab193932)

Immunofluorescent analysis of 4% PFA-fixed, 0.1% Triton X-100 permeabilized HepG2 (human liver hepatocellular carcinoma cell line) cells labeling Fibrinogen beta chain with ab193932 at 1/100 dilution, followed by Goat Anti-Rabbit IgG H&L (Alexa Fluor<sup>®</sup> 488) (**ab150077**) secondary antibody at 1/1000 dilution (green). Confocal image showing cytoplasmic staining of Fibrinogen beta on HepG2 cells.

The nuclear counter stain is DAPI (blue). Tubulin is detected with Anti-alpha Tubulin antibody [DM1A] - Microtubule Marker (Alexa Fluor<sup>®</sup> 594) (**ab195889**) (red) at 1/200 dilution.

Secondary antibody only control: Used PBS instead of primary antibody, secondary antibody is Goat Anti-Rabbit IgG H&L (Alexa Fluor<sup>®</sup> 488) (**ab150077**) secondary antibody at 1/1000 dilution.



Western blot - Anti-Fibrinogen beta chain antibody [EPR19765] (ab193932)

**All lanes** : Anti-Fibrinogen beta chain antibody [EPR19765] (ab193932) at 1/2000 dilution

**Lane 1** : His-tagged human fibrinogen alpha chain recombinant protein (aa401-866)

**Lane 2** : GST-His-tagged human fibrinogen beta chain recombinant protein (aa1-491)

**Lane 3** : GST-His-tagged human fibrinogen gamma chain recombinant protein (aa1-453)

Lysates/proteins at 0.02 µg per lane.

### Secondary

**All lanes** : Goat Anti-Rabbit IgG H&L (HRP) (**ab97051**) at 1/100000 dilution

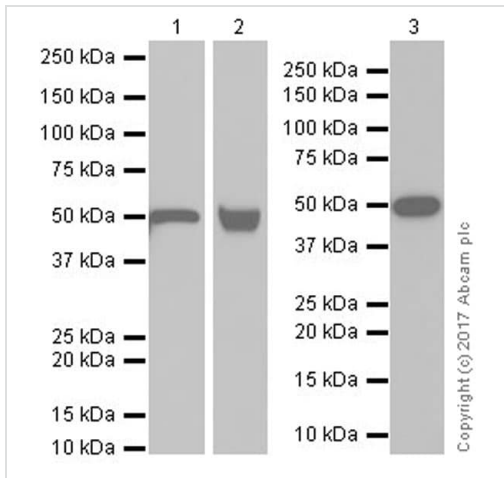
Developed using the ECL technique.

**Predicted band size:** 55 kDa

**Observed band size:** 80 kDa

**Exposure time:** 1 second

Blocking/Dilution buffer: 5% NFDm/TBST.



Western blot - Anti-Fibrinogen beta chain antibody [EPR19765] (ab193932)

**All lanes** : Anti-Fibrinogen beta chain antibody [EPR19765] (ab193932) at 1/1000 dilution

**Lane 1** : Human fetal liver tissue lysate

**Lane 2** : Human plasma

**Lane 3** : HepG2 (human liver hepatocellular carcinoma cell line) whole cell lysate

Lysates/proteins at 20 µg per lane.

### Secondary

**Lanes 1-2** : VeriBlot for IP Detection Reagent (HRP) (**ab131366**) at 1/1000 dilution

**Lane 3** : Goat Anti-Rabbit IgG Peroxidase Conjugate, specific to the non-reduced form of IgG at 1/10000 dilution

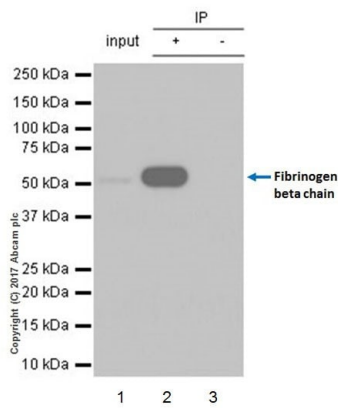
Developed using the ECL technique.

**Predicted band size:** 55 kDa

**Observed band size:** 55 kDa

Blocking/Dilution buffer: 5% NFDm/TBST.

Exposure time: Lane 1: 5 seconds; Lane 2: 1 second; Lane 3: 3 minutes.



Immunoprecipitation - Anti-Fibrinogen beta chain antibody [EPR19765] (ab193932)

Fibrinogen beta chain was immunoprecipitated from 0.35 mg of HepG2 (human liver hepatocellular carcinoma cell line) lysate with ab193932 at 1/30 dilution. Western blot was performed from the immunoprecipitate using ab193932 at 1/500 dilution. VeriBlot for IP Detection Reagent (HRP) (**ab131366**), was used for detection at 1/1000 dilution.

Lane 1: HepG2 whole cell lysate 10 µg (Input).



Lane 2: ab193932 IP in HepG2 whole cell lysate.

Lane 3: Rabbit monoclonal IgG (**ab172730**) instead of ab193932 in HepG2 whole cell lysate.

Blocking and dilution buffer and concentration: 5% NFD/MTBST.

Exposure time: 30 seconds.

### Why choose a recombinant antibody?

 <b>Research with confidence</b> Consistent and reproducible results	 <b>Long-term and scalable supply</b> Recombinant technology
 <b>Success from the first experiment</b> Confirmed specificity	 <b>Ethical standards compliant</b> Animal-free production

Anti-Fibrinogen beta chain antibody [EPR19765] (ab193932)

**Please note:** All products are "FOR RESEARCH USE ONLY. NOT FOR USE IN DIAGNOSTIC PROCEDURES"

### Our Abpromise to you: Quality guaranteed and expert technical support

- Replacement or refund for products not performing as stated on the datasheet
- Valid for 12 months from date of delivery
- Response to your inquiry within 24 hours
- We provide support in Chinese, English, French, German, Japanese and Spanish
- Extensive multi-media technical resources to help you
- We investigate all quality concerns to ensure our products perform to the highest standards

If the product does not perform as described on this datasheet, we will offer a refund or replacement. For full details of the Abpromise, please visit <https://www.abcam.com/abpromise> or contact our technical team.

## Terms and conditions

---

- Guarantee only valid for products bought direct from Abcam or one of our authorized distributors