




Product datasheet

Anti-Fibulin 1 antibody ab230994

★★★★★ [1 Abreviews](#) [6 Images](#)

Overview

| | |
|----------------------------|---|
| Product name | Anti-Fibulin 1 antibody |
| Description | Rabbit polyclonal to Fibulin 1 |
| Host species | Rabbit |
| Tested applications | Suitable for: IHC-P, WB |
| Species reactivity | Reacts with: Rat Predicted to work with: Mouse  |
| Immunogen | Recombinant fragment corresponding to Rat Fibulin 1 aa 100-250. N-terminal His and GST Tag. Expressed in E.coli. Database link: D3ZQ25  Run BLAST with  Run BLAST with |
| Positive control | IHC-P: Rat liver, testis, stomach and pancreas tissues. WB: Rat heart, liver and brain lysates; Recombinant Rat Fibulin 1 protein. |
| General notes | <p>The Life Science industry has been in the grips of a reproducibility crisis for a number of years. Abcam is leading the way in addressing this with our range of recombinant monoclonal antibodies and knockout edited cell lines for gold-standard validation. Please check that this product meets your needs before purchasing.</p> <p>If you have any questions, special requirements or concerns, please send us an inquiry and/or contact our Support team ahead of purchase. Recommended alternatives for this product can be found below, along with publications, customer reviews and Q&As</p> |

Properties

| | |
|-----------------------------|---|
| Form | Liquid |
| Storage instructions | Shipped at 4°C. Store at +4°C short term (1-2 weeks). Upon delivery aliquot. Store at -20°C long term. Avoid freeze / thaw cycle. |
| Storage buffer | pH: 7.40 Preservative: 0.011% Proclin 300 Constituents: 55.77% Glycerol (glycerin, glycerine), 44.219% PBS |
| Purity | Immunogen affinity purified |
| Purification notes | ab230994 was purified by antigen-specific affinity chromatography followed by Protein A affinity chromatography. |

| | |
|------------------|------------|
| Clonality | Polyclonal |
| Isotype | IgG |

Applications

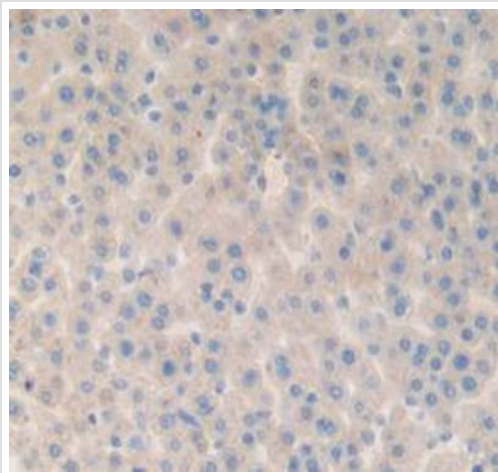
The Abpromise guarantee Our **Abpromise guarantee** covers the use of ab230994 in the following tested applications. The application notes include recommended starting dilutions; optimal dilutions/concentrations should be determined by the end user.

| Application | Abreviews | Notes |
|-------------|-----------|---|
| IHC-P | | Use a concentration of 5 - 20 µg/ml. |
| WB | | Use a concentration of 0.5 - 2 µg/ml. Predicted molecular weight: 78 kDa. |

Target

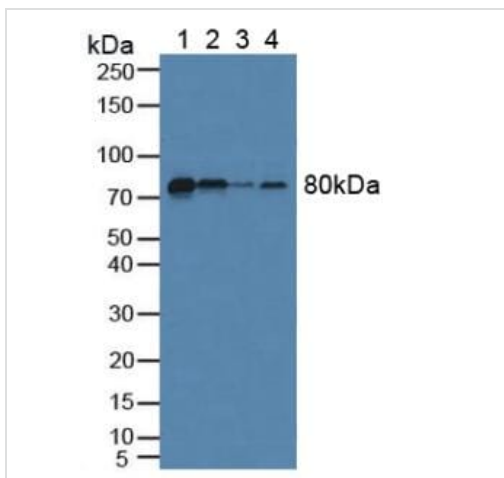
| | |
|-------------------------------|--|
| Function | Incorporated into fibronectin-containing matrix fibers. May play a role in cell adhesion and migration along protein fibers within the extracellular matrix (ECM). Could be important for certain developmental processes and contribute to the supramolecular organization of ECM architecture, in particular to those of basement membranes. Has been implicated in a role in cellular transformation and tumor invasion, it appears to be a tumor suppressor. May play a role in haemostasis and thrombosis owing to its ability to bind fibrinogen and incorporate into clots. Could play a significant role in modulating the neurotrophic activities of APP, particularly soluble APP. |
| Tissue specificity | Isoform A and isoform B are only expressed in placenta. Isoform C and isoform D are expressed in a variety of tissues and cultured cells. |
| Involvement in disease | Note=A chromosomal aberration involving FBLN1 is found in a complex type of synpolydactyly referred to as 3/3-prime/4 synpolydactyly associated with metacarpal and metatarsal synostoses. Reciprocal translocation t(12;22)(p11.2;q13.3) with C12orf2. Fibroblasts derived from a patient with synpolydactyly displayed alterations in the level of isoform D splice variant incorporated into the ECM and secreted into the conditioned culture medium. By contrast, the expression of isoform C was not perturbed in the patients fibroblasts. Furthermore, no aberrant polypeptides were detected in extracts of cultured patients fibroblasts. The translocation t(12;22) may result in haploinsufficiency of the isoform D splice variant, which could lead to the observed limb malformation. Note=Elevated expression and altered processing of FBLN1 protein is associated with human breast cancer. |
| Sequence similarities | Belongs to the fibulin family. Contains 3 anaphylatoxin-like domains. Contains 9 EGF-like domains. |
| Developmental stage | Widely expressed during embryonic development. Prominent in the matrix of the leptomenigeal anlage, in basement membranes of the neuroepithelium and the perineurium of peripheral nerves. In embryos of gestational week (gw) 4, staining was observed in the early mesenchymal bone anlagen. In gw 6.5 and 8, all perichondrial structures showed expression but the chondrocytes themselves showed no staining. In gw 10, expression is prominent in the interterritorial matrix surrounding the hypertrophic chondrocytes. |

Images



Immunohistochemistry (Formalin/PFA-fixed paraffin-embedded sections) - Anti-Fibulin 1 antibody (ab230994)

Paraffin-embedded rat liver tissue stained for Fibulin 1 using ab230994 at 20 $\mu\text{g/ml}$ in immunohistochemical analysis.



Western blot - Anti-Fibulin 1 antibody (ab230994)

All lanes : Anti-Fibulin 1 antibody (ab230994) at 2 $\mu\text{g/ml}$

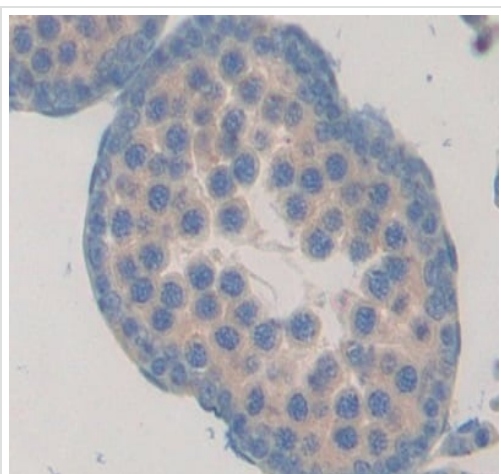
Lane 1 : Rat serum

Lane 2 : Rat heart lysate

Lane 3 : Rat liver lysate

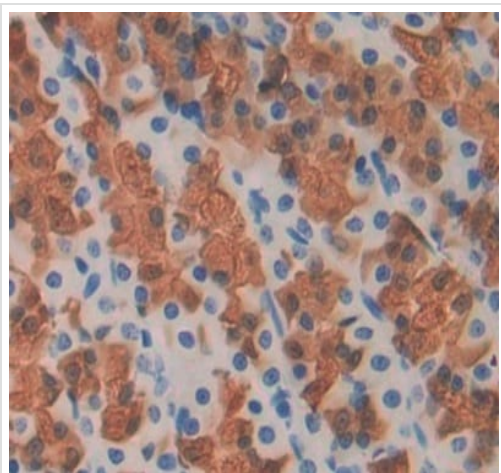
Lane 4 : Rat brain lysate

Predicted band size: 78 kDa



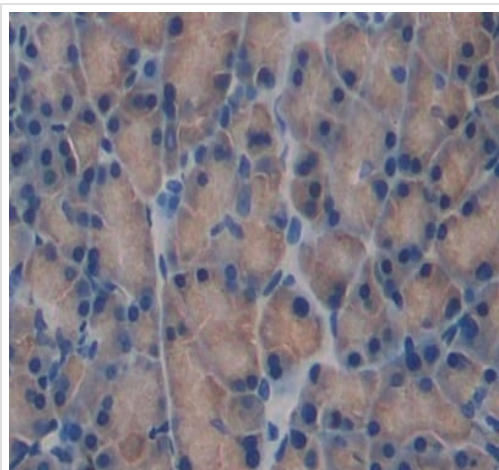
Paraffin-embedded rat testis tissue stained for Fibulin 1 using ab230994 at 20 $\mu\text{g/ml}$ in immunohistochemical analysis.

Immunohistochemistry (Formalin/PFA-fixed paraffin-embedded sections) - Anti-Fibulin 1 antibody (ab230994)



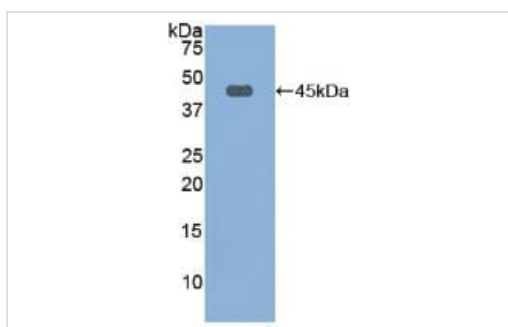
Paraffin-embedded rat stomach tissue stained for Fibulin 1 using ab230994 at 20 $\mu\text{g/ml}$ in immunohistochemical analysis.

Immunohistochemistry (Formalin/PFA-fixed paraffin-embedded sections) - Anti-Fibulin 1 antibody (ab230994)



Paraffin-embedded rat pancreas tissue stained for Fibulin 1 using ab230994 at 20 µg/ml in immunohistochemical analysis.

Immunohistochemistry (Formalin/PFA-fixed paraffin-embedded sections) - Anti-Fibulin 1 antibody (ab230994)



Anti-Fibulin 1 antibody (ab230994) at 2 µg/ml + Recombinant Rat Fibulin 1 protein

Predicted band size: 78 kDa

Western blot - Anti-Fibulin 1 antibody (ab230994)

Please note: All products are "FOR RESEARCH USE ONLY. NOT FOR USE IN DIAGNOSTIC PROCEDURES"

Our Abpromise to you: Quality guaranteed and expert technical support

- Replacement or refund for products not performing as stated on the datasheet
- Valid for 12 months from date of delivery
- Response to your inquiry within 24 hours
- We provide support in Chinese, English, French, German, Japanese and Spanish
- Extensive multi-media technical resources to help you
- We investigate all quality concerns to ensure our products perform to the highest standards

If the product does not perform as described on this datasheet, we will offer a refund or replacement. For full details of the Abpromise, please visit <https://www.abcam.com/abpromise> or contact our technical team.

Terms and conditions

- Guarantee only valid for products bought direct from Abcam or one of our authorized distributors