



Anti-Fibulin 2 antibody ab234993

3 Images

Overview

Product name	Anti-Fibulin 2 antibody
Description	Rabbit polyclonal to Fibulin 2
Host species	Rabbit
Tested applications	Suitable for: WB, IHC-P
Species reactivity	Reacts with: Human
Immunogen	Recombinant fragment corresponding to Human Fibulin 2 aa 300-450. Database link: P98095
	 Run BLAST with  Run BLAST with
Positive control	WB: HeLa, U-251 MG and A549 whole cell lysates. IHC-P: Human placenta and liver cancer tissue.
General notes	<p>The Life Science industry has been in the grips of a reproducibility crisis for a number of years. Abcam is leading the way in addressing this with our range of recombinant monoclonal antibodies and knockout edited cell lines for gold-standard validation. Please check that this product meets your needs before purchasing.</p> <p>If you have any questions, special requirements or concerns, please send us an inquiry and/or contact our Support team ahead of purchase. Recommended alternatives for this product can be found below, along with publications, customer reviews and Q&As</p>

Properties

Form	Liquid
Storage instructions	Shipped at 4°C. Store at +4°C short term (1-2 weeks). Upon delivery aliquot. Store at -20°C long term. Avoid freeze / thaw cycle.
Storage buffer	pH: 7.40 Preservative: 0.03% Proclin 300 Constituents: PBS, 50% Glycerol (glycerin, glycerine)
Purity	Protein G purified
Purification notes	Purity >95%
Clonality	Polyclonal
Isotype	IgG

Applications

The Abpromise guarantee

Our **Abpromise guarantee** covers the use of ab234993 in the following tested applications.

The application notes include recommended starting dilutions; optimal dilutions/concentrations should be determined by the end user.

Application	Abreviews	Notes
WB		1/500 - 1/5000. Detects a band of approximately 127 kDa (predicted molecular weight: 127 kDa).
IHC-P		1/500 - 1/1000.

Target

Function

Its binding to fibronectin and some other ligands is calcium dependent.

Tissue specificity

Component of both basement membranes and other connective tissues. Expressed in heart, placenta and ovary.

Sequence similarities

Belongs to the fibulin family.
Contains 3 anaphylatoxin-like domains.
Contains 11 EGF-like domains.

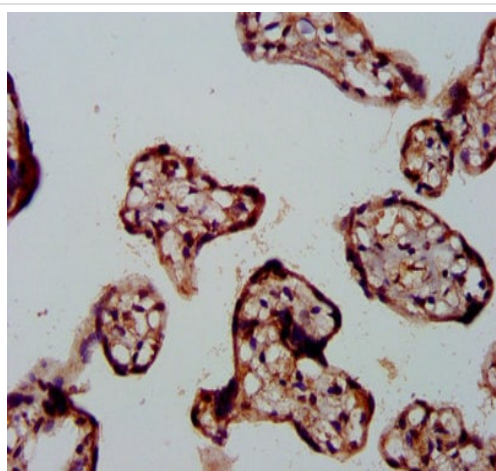
Developmental stage

Widely expressed during embryonic development. Primarily detected within the neuroepithelium, spinal ganglia and peripheral nerves.

Cellular localization

Secreted > extracellular space > extracellular matrix.

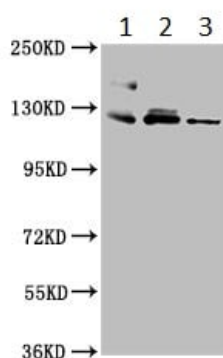
Images



Immunohistochemistry (Formalin/PFA-fixed paraffin-embedded sections) - Anti-Fibulin 2 antibody (ab234993)

Paraffin-embedded human placenta tissue stained for Fibulin 2 using ab234993 at 1/500 dilution in immunohistochemical analysis.

After dewaxing and hydration, antigen retrieval was mediated by high pressure in a citrate buffer (pH 6.0). Section was blocked with 10% normal goat serum 30 minutes at room temperature. Then primary antibody (1% BSA) was incubated at 4°C overnight. The primary is detected by a biotinylated secondary antibody and visualized tissue using an HRP conjugated SP system.



Western blot - Anti-Fibulin 2 antibody (ab234993)

All lanes : Anti-Fibulin 2 antibody (ab234993) at 1/500 dilution

Lane 1 : HeLa (human epithelial cell line from cervix adenocarcinoma) whole cell lysate

Lane 2 : U-251 MG (human brain glioma cell line) whole cell lysate

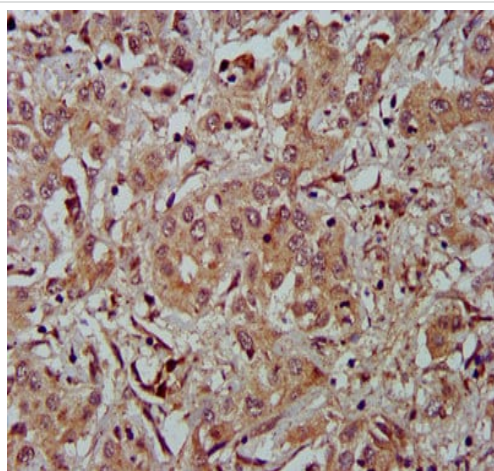
Lane 3 : A549 (human lung carcinoma cell line) whole cell lysate

Secondary

All lanes : Goat polyclonal to rabbit IgG at 1/50000 dilution

Predicted band size: 127 kDa

Observed band size: 127 kDa



Immunohistochemistry (Formalin/PFA-fixed paraffin-embedded sections) - Anti-Fibulin 2 antibody (ab234993)

Paraffin-embedded human liver cancer tissue stained for Fibulin 2 using ab234993 at 1/500 dilution in immunohistochemical analysis.

After dewaxing and hydration, antigen retrieval was mediated by high pressure in a citrate buffer (pH 6.0). Section was blocked with 10% normal goat serum 30 minutes at room temperature. Then primary antibody (1% BSA) was incubated at 4°C overnight. The primary is detected by a biotinylated secondary antibody and visualized tissue using an HRP conjugated SP system.

Please note: All products are "FOR RESEARCH USE ONLY. NOT FOR USE IN DIAGNOSTIC PROCEDURES"

Our Abpromise to you: Quality guaranteed and expert technical support

- Replacement or refund for products not performing as stated on the datasheet
- Valid for 12 months from date of delivery
- Response to your inquiry within 24 hours
- We provide support in Chinese, English, French, German, Japanese and Spanish
- Extensive multi-media technical resources to help you
- We investigate all quality concerns to ensure our products perform to the highest standards

If the product does not perform as described on this datasheet, we will offer a refund or replacement. For full details of the Abpromise, please visit <https://www.abcam.com/abpromise> or contact our technical team.

Terms and conditions

- Guarantee only valid for products bought direct from Abcam or one of our authorized distributors