




Product datasheet

Anti-Fibulin 2 antibody - N-terminal ab191039

1 Image

Overview

| | |
|----------------------------|---|
| Product name | Anti-Fibulin 2 antibody - N-terminal |
| Description | Rabbit polyclonal to Fibulin 2 - N-terminal |
| Host species | Rabbit |
| Tested applications | Suitable for: WB |
| Species reactivity | Reacts with: Rat, Human Predicted to work with: Mouse  |
| Immunogen | Synthetic peptide corresponding to Human Fibulin 2 aa 150-250 (N terminal). Database link: P98095  Run BLAST with  Run BLAST with |
| General notes | <p>The Life Science industry has been in the grips of a reproducibility crisis for a number of years. Abcam is leading the way in addressing this with our range of recombinant monoclonal antibodies and knockout edited cell lines for gold-standard validation. Please check that this product meets your needs before purchasing.</p> <p>If you have any questions, special requirements or concerns, please send us an inquiry and/or contact our Support team ahead of purchase. Recommended alternatives for this product can be found below, along with publications, customer reviews and Q&As</p> |

Properties

| | |
|-----------------------------|--|
| Form | Liquid |
| Storage instructions | Shipped at 4°C. Store at +4°C short term (1-2 weeks). Upon delivery aliquot. Store at -20°C long term. Avoid freeze / thaw cycle. |
| Storage buffer | Preservatives: 0.025% Thimerosal (merthiolate), 0.025% Sodium azide Constituents: 2.5% BSA, 0.45% Sodium chloride, 0.1% Dibasic monohydrogen sodium phosphate |
| Purity | Immunogen affinity purified |
| Clonality | Polyclonal |
| Isotype | IgG |

Applications

The Abpromise guarantee

Our **Abpromise guarantee** covers the use of ab191039 in the following tested applications.

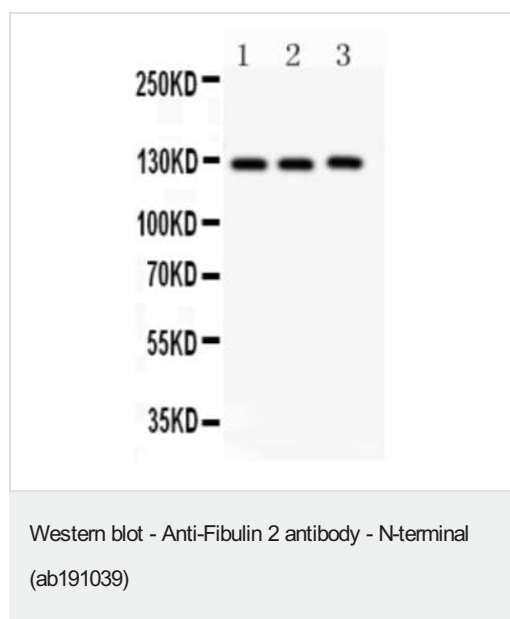
The application notes include recommended starting dilutions; optimal dilutions/concentrations should be determined by the end user.

| Application | Abreviews | Notes |
|-------------|-----------|--|
| WB | | Use a concentration of 0.1 - 0.5 µg/ml. Predicted molecular weight: 127 kDa. |

Target

| | |
|------------------------------|---|
| Function | Its binding to fibronectin and some other ligands is calcium dependent. |
| Tissue specificity | Component of both basement membranes and other connective tissues. Expressed in heart, placenta and ovary. |
| Sequence similarities | Belongs to the fibulin family. Contains 3 anaphylatoxin-like domains. Contains 11 EGF-like domains. |
| Developmental stage | Widely expressed during embryonic development. Primarily detected within the neuroepithelium, spinal ganglia and peripheral nerves. |
| Cellular localization | Secreted > extracellular space > extracellular matrix. |

Images



All lanes : Anti-Fibulin 2 antibody - N-terminal (ab191039) at 0.5 µg/ml

Lane 1 : Rat liver tissue lysate at 50 µg

Lane 2 : Rat brain tissue lysate at 50 µg

Lane 3 : HeLa cell Lysate at 40 µg

Predicted band size: 127 kDa

Please note: All products are "FOR RESEARCH USE ONLY. NOT FOR USE IN DIAGNOSTIC PROCEDURES"

Our Abpromise to you: Quality guaranteed and expert technical support

- Replacement or refund for products not performing as stated on the datasheet
- Valid for 12 months from date of delivery

- Response to your inquiry within 24 hours
- We provide support in Chinese, English, French, German, Japanese and Spanish
- Extensive multi-media technical resources to help you
- We investigate all quality concerns to ensure our products perform to the highest standards

If the product does not perform as described on this datasheet, we will offer a refund or replacement. For full details of the Abpromise, please visit <https://www.abcam.com/abpromise> or contact our technical team.

Terms and conditions

- Guarantee only valid for products bought direct from Abcam or one of our authorized distributors