

## Product datasheet

### Anti-FIF antibody ab65836

★★★★★ [1 Abreviews](#) [4 References](#) [9 Images](#)

#### Overview

---

<b>Product name</b>	Anti-FIF antibody
<b>Description</b>	Rabbit polyclonal to FIF
<b>Host species</b>	Rabbit
<b>Tested applications</b>	<b>Suitable for:</b> ICC/IF, IHC-P, WB, IHC-Fr
<b>Species reactivity</b>	<b>Reacts with:</b> Mouse, Rat, Human
<b>Immunogen</b>	Synthetic peptide corresponding to Human FIF. Database link: <a href="#">Q9BZZ5</a>
<b>Positive control</b>	WB: Rat Cardiac Muscle, Rat Brain, Rat Testis, Rat Placenta, MCF-7, HeLa, CEM, SMMC, and COLO320 Lysates. IHC-P: Rat Brain, Human placenta, Rat intestines, and Mouse intestines testis. IHC-F: Rat Cardiac Muscle. ICC/IF: HeLa cells.
<b>General notes</b>	<p>The Life Science industry has been in the grips of a reproducibility crisis for a number of years. Abcam is leading the way in addressing this with our range of recombinant monoclonal antibodies and knockout edited cell lines for gold-standard validation. Please check that this product meets your needs before purchasing.</p> <p>If you have any questions, special requirements or concerns, please send us an inquiry and/or contact our Support team ahead of purchase. Recommended alternatives for this product can be found below, along with publications, customer reviews and Q&amp;As</p>

#### Properties

---

<b>Form</b>	Liquid
<b>Storage instructions</b>	Shipped at 4°C. Upon delivery aliquot and store at -20°C. Avoid freeze / thaw cycles.
<b>Storage buffer</b>	Preservatives: 0.025% Sodium azide, 0.025% Thimerosal (merthiolate) Constituents: 0.45% Sodium chloride, 0.1% Dibasic monohydrogen sodium phosphate, 2.5% BSA
<b>Purity</b>	Immunogen affinity purified
<b>Clonality</b>	Polyclonal
<b>Isotype</b>	IgG

#### Applications

---

**The Abpromise guarantee**

Our **Abpromise guarantee** covers the use of ab65836 in the following tested applications.

The application notes include recommended starting dilutions; optimal dilutions/concentrations should be determined by the end user.

Application	Abreviews	Notes
ICC/IF		Use a concentration of 0.5 - 1 µg/ml.
IHC-P		Use a concentration of 0.5 - 1 µg/ml. Perform heat mediated antigen retrieval before commencing with IHC staining protocol.
WB	★★★★★ (1)	Use a concentration of 1 - 2 µg/ml. Detects a band of approximately 58 kDa (predicted molecular weight: 58 kDa).
IHC-Fr		Use a concentration of 0.5 - 1 µg/ml.

**Target****Function**

Antiapoptotic factor that may have a role in protein assembly. Negatively regulates ACIN1. By binding to ACIN1, it suppresses ACIN1 cleavage from CASP3 and ACIN1-mediated DNA fragmentation. Also known to efficiently suppress E2F1-induced apoptosis. Its depletion enhances the cytotoxic action of the chemotherapeutic drugs.

**Tissue specificity**

Expressed in all tissues tested, including heart, brain, placenta, lung, liver, skeletal muscle, kidney and pancreas. Highest levels in heart, pancreas and placenta. Highly expressed in several cancers. Preferentially expressed in squamous cell carcinoma versus adenocarcinoma in non-small cell lung cancer.

**Sequence similarities**

Belongs to the API5 family.

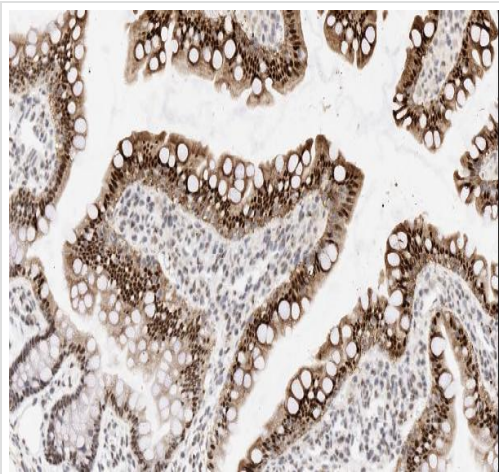
**Domain**

Two regions, an N-terminal (aa 96-107) and a C-terminal (aa 274-311) are required for binding FGF2.

**Cellular localization**

Cytoplasm and Nucleus. Cytoplasm. Mainly nuclear. Can also be cytoplasmic.

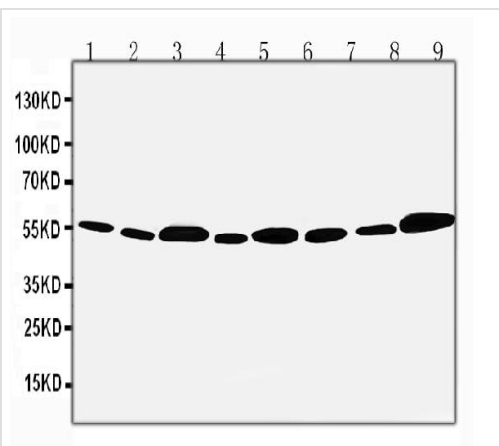
**Images**



Immunohistochemistry (Formalin/PFA-fixed paraffin-embedded sections) - Anti-FIF antibody (ab65836)

Immunohistochemistry (Formalin/PFA-fixed paraffin-embedded sections) of rat intestine tissue staining FIF using ab65836 at 1 µg/ml.

Heat mediated antigen retrieval was performed in citrate buffer (pH6, epitope retrieval solution) for 20 mins. The tissue section was blocked with 10% goat serum. The tissue section was then incubated with 1 µg/ml ab65836 overnight at 4°C. Biotinylated goat anti-rabbit IgG was used as secondary antibody and incubated for 30 minutes at 37°C. The tissue section was developed using Streptavidin-Biotin-Complex with DAB as the chromogen.

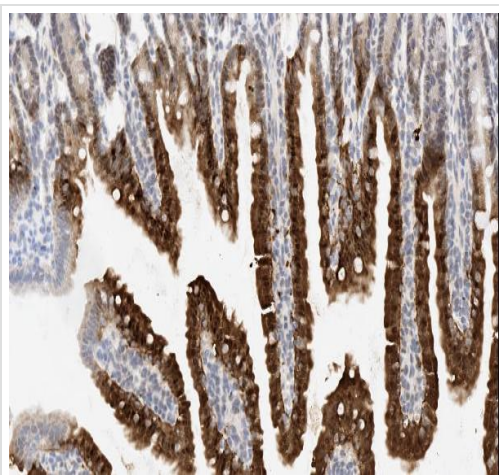


Western blot - Anti-FIF antibody (ab65836)

**All lanes :** Anti-FIF antibody (ab65836) at 0.5 µg/ml

- Lane 1 :** Rat Cardiac Muscle Tissue Lysate
- Lane 2 :** Rat Brain Tissue Lysate
- Lane 3 :** Rat Testis Tissue Lysate
- Lane 4 :** Rat Placenta Tissue Lysate
- Lane 5 :** MCF-7 Cell Lysate
- Lane 6 :** HeLa Cell Lysate
- Lane 7 :** CEM Cell Lysate
- Lane 8 :** SMMC Cell Lysate
- Lane 9 :** COLO320 Cell Lysate

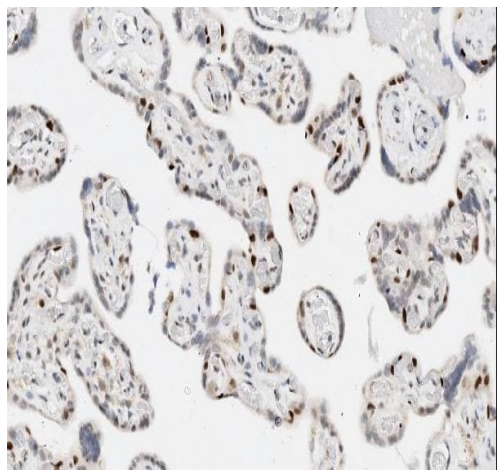
**Predicted band size:** 58 kDa



Immunohistochemistry (Formalin/PFA-fixed paraffin-embedded sections) - Anti-FIF antibody (ab65836)

Immunohistochemistry (Formalin/PFA-fixed paraffin-embedded sections) of mouse intestine tissue staining FIF using ab65836 at 1 µg/ml.

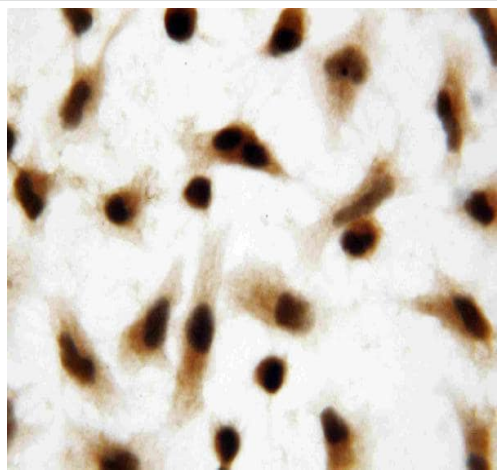
Heat mediated antigen retrieval was performed in citrate buffer (pH6, epitope retrieval solution) for 20 mins. The tissue section was blocked with 10% goat serum. The tissue section was then incubated with 1 µg/ml ab65836 overnight at 4°C. Biotinylated goat anti-rabbit IgG was used as secondary antibody and incubated for 30 minutes at 37°C. The tissue section was developed using Streptavidin-Biotin-Complex with DAB as the chromogen.



Immunohistochemistry (Formalin/PFA-fixed paraffin-embedded sections) - Anti-FIF antibody (ab65836)

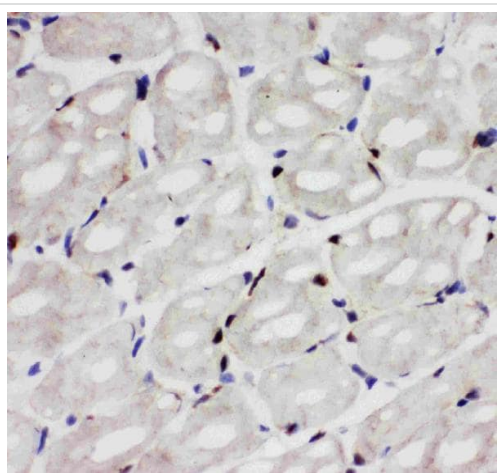
Immunohistochemistry (Formalin/PFA-fixed paraffin-embedded sections) of human placenta tissue staining FIF using ab65836 at 1 µg/ml.

Heat mediated antigen retrieval was performed in citrate buffer (pH6, epitope retrieval solution) for 20 mins. The tissue section was blocked with 10% goat serum. The tissue section was then incubated with 1µg/ml ab65836 overnight at 4°C. Biotinylated goat anti-rabbit IgG was used as secondary antibody and incubated for 30 minutes at 37°C. The tissue section was developed using Streptavidin-Biotin-Complex with DAB as the chromogen.



Immunocytochemistry/ Immunofluorescence - Anti-FIF antibody (ab65836)

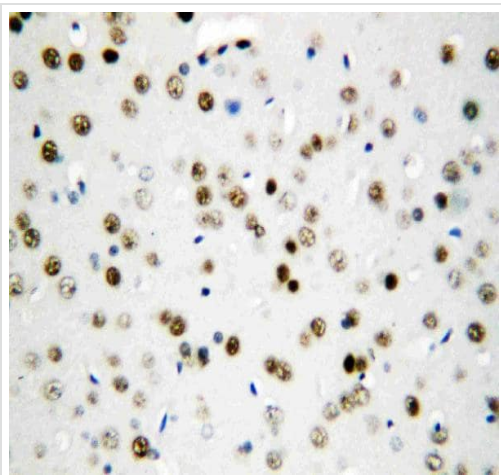
Immunocytochemistry/ Immunofluorescence of HeLa cells staining FIF using ab65836 at 1 µg/ml.



Immunohistochemistry (Frozen sections) - Anti-FIF antibody (ab65836)

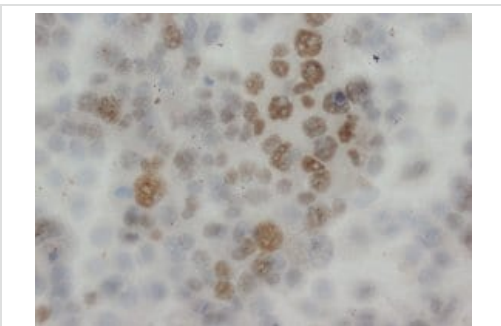
Immunohistochemistry (Frozen sections) of Rat cardiac muscle tissue staining FIF using ab65836 at 1 µg/ml.





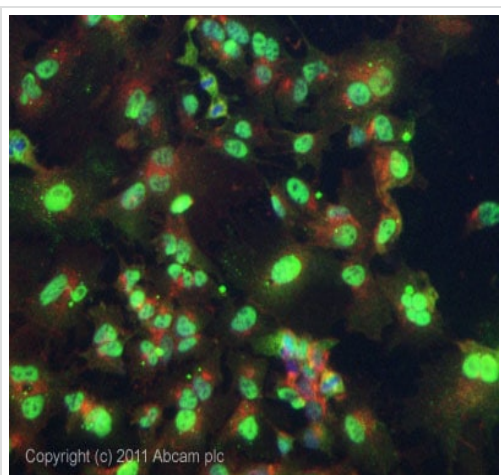
Immunohistochemistry (Formalin/PFA-fixed paraffin-embedded sections) - Anti-FIF antibody (ab65836)

Immunohistochemistry (Formalin/PFA-fixed paraffin-embedded sections) of Rat brain tissue staining FIF using ab65836 at 1 µg/ml.



Immunohistochemistry (Formalin/PFA-fixed paraffin-embedded sections) - Anti-FIF antibody (ab65836)

This image shows human epidermal carcinoma tissue stained with ab65836 at 0.5-1 µg/ml.



Immunocytochemistry/ Immunofluorescence - Anti-FIF antibody (ab65836)

ICC/IF image of ab65836 stained HepG2 cells. The cells were 4% formaldehyde fixed (10 min) and then incubated in 1%BSA / 10% normal goat serum / 0.3M glycine in 0.1% PBS-Tween for 1h to permeabilise the cells and block non-specific protein-protein interactions. The cells were then incubated with the antibody (ab65836, 5µg/ml) overnight at +4°C. The secondary antibody (green) was [ab96899](#), DyLight® 488 goat anti-rabbit IgG (H+L) used at a 1/250 dilution for 1h. Alexa Fluor® 594 WGA was used to label plasma membranes (red) at a 1/200 dilution for 1h. DAPI was used to stain the cell nuclei (blue) at a concentration of 1.43µM.

**Please note:** All products are "FOR RESEARCH USE ONLY. NOT FOR USE IN DIAGNOSTIC PROCEDURES"

## **Our Abpromise to you: Quality guaranteed and expert technical support**

---

- Replacement or refund for products not performing as stated on the datasheet
- Valid for 12 months from date of delivery
- Response to your inquiry within 24 hours
  
- We provide support in Chinese, English, French, German, Japanese and Spanish
- Extensive multi-media technical resources to help you
- We investigate all quality concerns to ensure our products perform to the highest standards

If the product does not perform as described on this datasheet, we will offer a refund or replacement. For full details of the Abpromise, please visit <https://www.abcam.com/abpromise> or contact our technical team.

## **Terms and conditions**

---

- Guarantee only valid for products bought direct from Abcam or one of our authorized distributors