


Product datasheet

Anti-FIP1L1 antibody ab80271

3 Images

Overview

Product name	Anti-FIP1L1 antibody
Description	Rabbit polyclonal to FIP1L1
Host species	Rabbit
Tested applications	Suitable for: IHC-P, WB, IP
Species reactivity	Reacts with: Human Predicted to work with: Cow, Chimpanzee, Rhesus monkey, Gorilla, Opossum, Orangutan, Elephant 
Immunogen	<p>Synthetic peptide within Human FIP1L1 aa 1-100. The exact immunogen sequence used to generate this antibody is proprietary information. If additional detail on the immunogen is needed to determine the suitability of the antibody for your needs, please contact our Scientific Support team to discuss your requirements. NP_112179.2</p> <p>Database link: Q6UN15</p>
Positive control	Whole cell lysate from HeLa and 293T cells.
General notes	<p>The Life Science industry has been in the grips of a reproducibility crisis for a number of years. Abcam is leading the way in addressing this with our range of recombinant monoclonal antibodies and knockout edited cell lines for gold-standard validation. Please check that this product meets your needs before purchasing.</p> <p>If you have any questions, special requirements or concerns, please send us an inquiry and/or contact our Support team ahead of purchase. Recommended alternatives for this product can be found below, along with publications, customer reviews and Q&As</p>

Properties

Form	Liquid
Storage instructions	Shipped at 4°C. Upon delivery aliquot and store at -20°C. Avoid freeze / thaw cycles.
Storage buffer	<p>pH: 7</p> <p>Preservative: 0.09% Sodium azide</p> <p>Constituents: 1.764% Sodium citrate, 1.815% Tris, 0.021% PBS</p>
Purity	Immunogen affinity purified
Clonality	Polyclonal
Isotype	IgG

Applications

The Abpromise guarantee

Our **Abpromise guarantee** covers the use of ab80271 in the following tested applications.

The application notes include recommended starting dilutions; optimal dilutions/concentrations should be determined by the end user.

Application	Abreviews	Notes
IHC-P		1/500 - 1/2000. Perform heat mediated antigen retrieval with citrate buffer pH 6 before commencing with IHC staining protocol.
WB		1/2000 - 1/10000. Detects a band of approximately 67 kDa (predicted molecular weight: 67 kDa).
IP		Use at 2-5 µg/mg of lysate.

Target

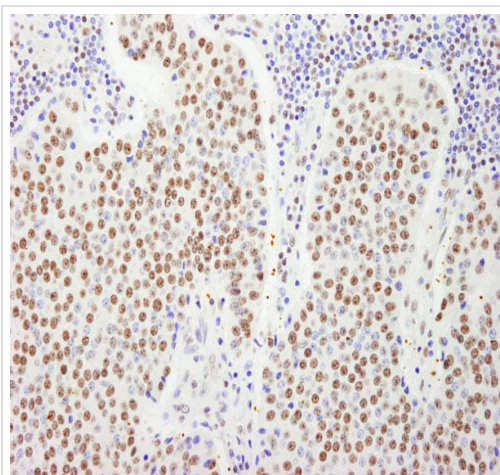
Relevance

FIP1L1 is an integral subunit of the cleavage and polyadenylation specificity factor (CPSF) complex. CPSF is a multisubunit complex that binds to the canonical AAUAAA hexamer and to U-rich upstream sequence elements on the pre-mRNA and interacts with poly(A) polymerase and other factors to bring about cleavage and poly(A) addition. FIP1L1 binds to U-rich RNA sequence elements surrounding the poly(A) site and contributes to poly(A) site recognition and stimulates poly(A) addition. FIP1L1 may act to tether poly(A) polymerase to the CPSF complex. A fusion of FIP1L1 and PDGFRA (FIP1L1-PDGFRA) is a recurrent molecular lesion in eosinophilia-associated myeloproliferative disorders.

Cellular localization

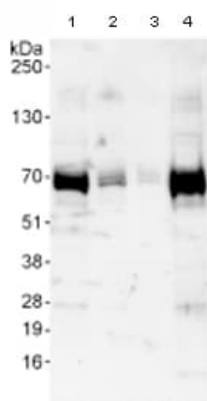
Nuclear

Images



Immunohistochemistry (Formalin/PFA-fixed paraffin-embedded sections) analysis of human pancreatic islet cell tumor tissue labelling FIP1L1 with ab80271 at 1/1000 (1µg/ml). Detection: DAB.

Immunohistochemistry (Formalin/PFA-fixed paraffin-embedded sections) - Anti-FIP1L1 antibody (ab80271)



Western blot - Anti-FIP1L1 antibody (ab80271)

All lanes : Anti-FIP1L1 antibody (ab80271) at 0.4 µg/ml

Lane 1 : Whole cell lysate from HeLa cells at 50 µg

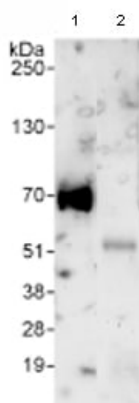
Lane 2 : Whole cell lysate from HeLa cells at 15 µg

Lane 3 : Whole cell lysate from HeLa cells at 5 µg

Lane 4 : Whole cell lysate from 293T cells at 50 µg

Predicted band size: 67 kDa

Observed band size: 67 kDa



Immunoprecipitation - Anti-FIP1L1 antibody (ab80271)

Detection of FIP1L1 in Immunoprecipitates of Whole cell lysate from HeLa cells (1 mg for IP, 20% of IP loaded) using ab80271 at 3 µg/mg lysate for IP (Lane 1) and at 1 µg/ml for subsequent WB detection. Lane 2 represents control IgG IP.

Please note: All products are "FOR RESEARCH USE ONLY. NOT FOR USE IN DIAGNOSTIC PROCEDURES"

Our Abpromise to you: Quality guaranteed and expert technical support

- Replacement or refund for products not performing as stated on the datasheet
- Valid for 12 months from date of delivery
- Response to your inquiry within 24 hours
- We provide support in Chinese, English, French, German, Japanese and Spanish
- Extensive multi-media technical resources to help you
- We investigate all quality concerns to ensure our products perform to the highest standards

If the product does not perform as described on this datasheet, we will offer a refund or replacement. For full details of the Abpromise, please visit <https://www.abcam.com/abpromise> or contact our technical team.

Terms and conditions

- Guarantee only valid for products bought direct from Abcam or one of our authorized distributors