

Product datasheet

FITC Anti-2B4 antibody [244F4] ab95805

[1 Image](#)

Overview

Product name	FITC Anti-2B4 antibody [244F4]
Description	FITC Rat monoclonal [244F4] to 2B4
Host species	Rat
Conjugation	FITC. Ex: 493nm, Em: 528nm
Tested applications	Suitable for: Flow Cyt
Species reactivity	Reacts with: Mouse
Immunogen	The details of the immunogen for this antibody are not available.
Positive control	BALB/c splenocytes.
General notes	

ab95805 was generated against cell lines expressing CD244. It reacts with the C57BL/6 but not Balb/c due to polymorphisms present in the immunoglobulin V domain of the protein.

The Life Science industry has been in the grips of a reproducibility crisis for a number of years. Abcam is leading the way in addressing this with our range of recombinant monoclonal antibodies and knockout edited cell lines for gold-standard validation. Please check that this product meets your needs before purchasing.

If you have any questions, special requirements or concerns, please send us an inquiry and/or contact our Support team ahead of purchase. Recommended alternatives for this product can be found below, along with publications, customer reviews and Q&As

Properties

Form	Liquid
Storage instructions	Shipped at 4°C. Store at +4°C.
Storage buffer	pH: 7.20 Preservative: 0.09% Sodium azide Constituent: 0.87% Sodium chloride
Purity	Protein G purified
Primary antibody notes	ab95805 was generated against cell lines expressing CD244. It reacts with the C57BL/6 but not Balb/c due to polymorphisms present in the immunoglobulin V domain of the protein.
Clonality	Monoclonal

Clone number 244F4
 Isotype IgG2a

Applications

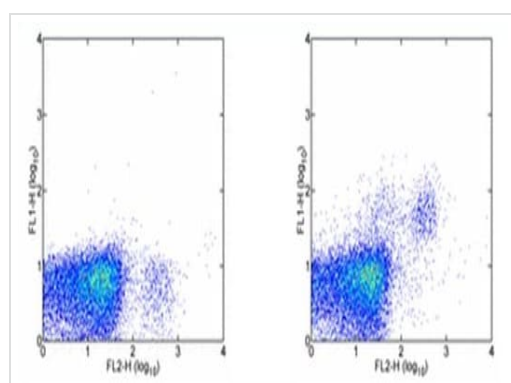
The Abpromise guarantee Our **Abpromise guarantee** covers the use of ab95805 in the following tested applications. The application notes include recommended starting dilutions; optimal dilutions/concentrations should be determined by the end user.

Application	Abreviews	Notes
Flow Cyt		Use 0.25µg for 10 ⁵⁻⁸ cells. Use final volume of 100µl. ab18446 Rat monoclonal IgG2a is suitable for use as an

Target

Function Modulate other receptor-ligand interactions to enhance leukocyte activation.
Tissue specificity Expressed in spleen, PBL, followed by lung, liver, testis and small intestine. Expressed not only in NK cells, but also on monocytes and basophils.
Sequence similarities Contains 2 Ig-like (immunoglobulin-like) domains.
Cellular localization Membrane.

Images



Staining of BALB/c splenocytes with Anti-NK1-1 PE and 0.125 µg of Rat IgG2a Isotype Control FITC (left) or 0.125 µg of ab95805 (right). Cells in the lymphocyte gate were used for analysis.

Flow Cytometry - FITC Anti-2B4 antibody [244F4] (ab95805)

Please note: All products are "FOR RESEARCH USE ONLY. NOT FOR USE IN DIAGNOSTIC PROCEDURES"

Our Abpromise to you: Quality guaranteed and expert technical support

- Replacement or refund for products not performing as stated on the datasheet
- Valid for 12 months from date of delivery
- Response to your inquiry within 24 hours

- We provide support in Chinese, English, French, German, Japanese and Spanish
- Extensive multi-media technical resources to help you
- We investigate all quality concerns to ensure our products perform to the highest standards

If the product does not perform as described on this datasheet, we will offer a refund or replacement. For full details of the Abpromise, please visit <https://www.abcam.com/abpromise> or contact our technical team.

Terms and conditions

- Guarantee only valid for products bought direct from Abcam or one of our authorized distributors