

Product datasheet

FITC Anti-ALDH1A1 antibody [03] ab275646

1 Image

Overview

Product name	FITC Anti-ALDH1A1 antibody [03]
Description	FITC Mouse monoclonal [03] to ALDH1A1
Host species	Mouse
Conjugation	FITC. Ex: 493nm, Em: 528nm
Tested applications	Suitable for: Flow Cyt (Intra)
Species reactivity	Reacts with: Human
Immunogen	Recombinant full length protein (His-tag) corresponding to Human ALDH1A1 aa 1 to the C-terminus. NP_000680.2. Polyhistidine tag at the N-terminus. Database link: P00352 Run BLAST with Run BLAST with
Positive control	Flow Cyt (Intra): A549 cells.
General notes	<p>The Life Science industry has been in the grips of a reproducibility crisis for a number of years. Abcam is leading the way in addressing this with our range of recombinant monoclonal antibodies and knockout edited cell lines for gold-standard validation. Please check that this product meets your needs before purchasing.</p> <p>If you have any questions, special requirements or concerns, please send us an inquiry and/or contact our Support team ahead of purchase. Recommended alternatives for this product can be found below, along with publications, customer reviews and Q&As</p>

Properties

Form	Liquid
Storage instructions	Shipped at 4°C. Store at +4°C. Do Not Freeze. Store In the Dark.
Storage buffer	Preservative: 0.09% Sodium azide Constituent: 0.5% BSA
Purity	Protein A purified
Clonality	Monoclonal
Clone number	03
Isotype	IgG1

Applications

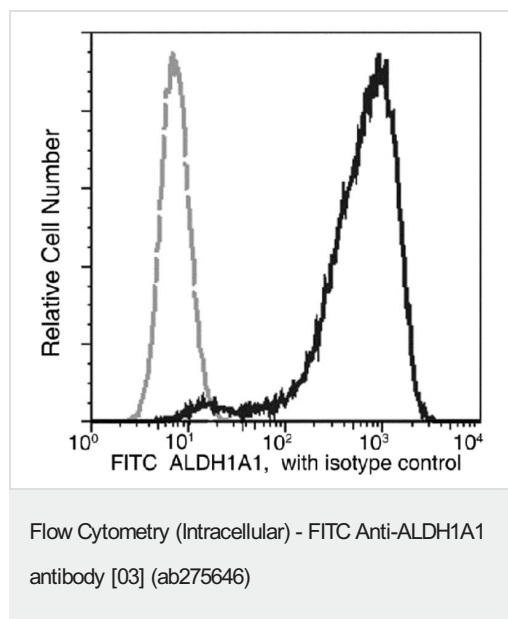
The Abpromise guarantee Our **Abpromise guarantee** covers the use of ab275646 in the following tested applications. The application notes include recommended starting dilutions; optimal dilutions/concentrations should be determined by the end user.

Application	Abreviews	Notes
Flow Cyt (Intra)		Use at an assay dependent concentration. 5 µl/Test

Target

Function	Binds free retinal and cellular retinol-binding protein-bound retinal. Can convert/oxidize retinaldehyde to retinoic acid.
Pathway	Cofactor metabolism; retinol metabolism.
Sequence similarities	Belongs to the aldehyde dehydrogenase family.
Cellular localization	Cytoplasm.

Images



Intracellular flow cytometric analysis of A549 (human lung carcinoma cell line) cells labeling Clusterin with ab275646 (Black) compared with an isotype control (Grey).

Please note: All products are "FOR RESEARCH USE ONLY. NOT FOR USE IN DIAGNOSTIC PROCEDURES"

Our Abpromise to you: Quality guaranteed and expert technical support

- Replacement or refund for products not performing as stated on the datasheet
- Valid for 12 months from date of delivery
- Response to your inquiry within 24 hours
- We provide support in Chinese, English, French, German, Japanese and Spanish
- Extensive multi-media technical resources to help you

- We investigate all quality concerns to ensure our products perform to the highest standards

If the product does not perform as described on this datasheet, we will offer a refund or replacement. For full details of the Abpromise, please visit <https://www.abcam.com/abpromise> or contact our technical team.

Terms and conditions

- Guarantee only valid for products bought direct from Abcam or one of our authorized distributors