


# FITC Anti-alpha smooth muscle Actin (acetyl E3) + ACTG2 (acetyl E3) antibody [E184] ab223920

Recombinant RabMAb

3 Images

### Overview

<b>Product name</b>	FITC Anti-alpha smooth muscle Actin (acetyl E3) + ACTG2 (acetyl E3) antibody [E184]
<b>Description</b>	FITC Rabbit monoclonal [E184] to alpha smooth muscle Actin (acetyl E3) + ACTG2 (acetyl E3)
<b>Host species</b>	Rabbit
<b>Conjugation</b>	FITC. Ex: 493nm, Em: 528nm
<b>Specificity</b>	<p>This antibody only detects actin in smooth muscle in immunohistochemistry.</p> <p>The antibody has been shown to detect P62736-ACTA (gene ACTA2): (Ac)-EEEDSTALVC and P63267-ACTH (gene ACTG2): (Ac)-EEETTALVC in indirect ELISA.</p>
<b>Tested applications</b>	<b>Suitable for:</b> Flow Cyt (Intra), ICC/IF
<b>Species reactivity</b>	<p><b>Reacts with:</b> Rat, Human</p> <p><b>Predicted to work with:</b> Mouse </p>
<b>Immunogen</b>	<p>Synthetic peptide within Human alpha smooth muscle Actin (N terminal). The exact sequence is proprietary.</p> <p>Database link: <a href="#">P62736</a></p> <p>(Peptide available as <a href="#">ab211918</a>)</p>
<b>Positive control</b>	Flow Cyt (intra): SV40LT-SMC cells. ICC/IF: SV40LT-SMC cells
<b>General notes</b>	<p>This product is a recombinant monoclonal antibody, which offers several advantages including:</p> <ul style="list-style-type: none"> <li>- High batch-to-batch consistency and reproducibility</li> <li>- Improved sensitivity and specificity</li> <li>- Long-term security of supply</li> <li>- Animal-free production</li> </ul> <p>For more information <a href="#">see here</a>.</p> <p>Our RabMAb<sup>®</sup> technology is a patented hybridoma-based technology for making rabbit monoclonal antibodies. For details on our patents, please refer to <a href="#">RabMAb<sup>®</sup> patents</a>.</p>

### Properties

<b>Form</b>	Liquid
<b>Storage instructions</b>	Shipped at 4°C. Store at +4°C short term (1-2 weeks). Upon delivery aliquot. Store at -20°C long

term. Avoid freeze / thaw cycle. Store In the Dark.

#### Storage buffer

pH: 7.40

Preservative: 0.02% Sodium azide

Constituents: PBS, 30% Glycerol (glycerin, glycerine), 1% BSA

#### Purity

Protein A purified

#### Clonality

Monoclonal

#### Clone number

E184

#### Isotype

IgG

### Applications

#### The Abpromise guarantee

Our **Abpromise guarantee** covers the use of ab223920 in the following tested applications.

The application notes include recommended starting dilutions; optimal dilutions/concentrations should be determined by the end user.

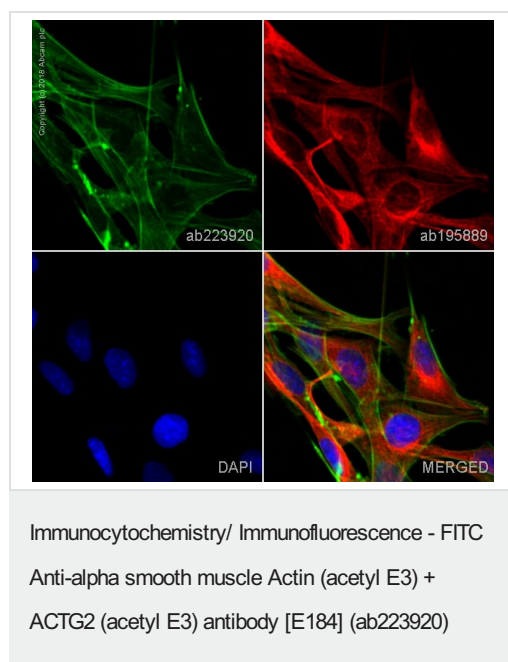
Application	Abreviews	Notes
Flow Cyt (Intra)		1/500.
ICC/IF		1/100. This product gave a positive signal in SV40LT-SMC cells fixed with 4% formaldehyde (10 min) and 100% methanol (5 min)

### Target

#### Cellular localization

alpha smooth muscle Actin: Cytoplasm > cytoskeleton. ACTG2: Cytoplasm > cytoskeleton.

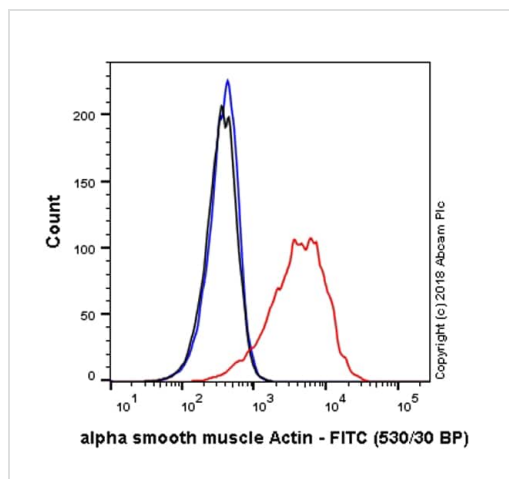
### Images



ab223920 staining alpha smooth muscle Actin in SV40LT-SMC cells. The cells were fixed with 4% formaldehyde (10 min), permeabilized with 0.1% Triton X-100 for 5 minutes and then blocked with 1% BSA/10% normal goat serum/0.3M glycine in 0.1% PBS-Tween for 1h. The cells were then incubated overnight at +4°C with ab223920 at 1/100 dilution (shown in green) and **ab195889**, Mouse monoclonal to alpha Tubulin (Alexa Fluor® 594), at 1/250 dilution (shown in red). Nuclear DNA was labelled with DAPI (shown in blue).

Image was taken with a confocal microscope (Leica-Microsystems, TCS SP8).

This product also gave a positive signal under the same testing conditions in SV40LT-SMC cells fixed with 100% methanol (5 min).



Flow Cytometry (Intracellular) - FITC Anti-alpha smooth muscle Actin (acetyl E3) + ACTG2 (acetyl E3) antibody [E184] (ab223920)

Overlay histogram showing SV40LT-SMC cells stained with ab223920 (red line). The cells were fixed with 4% formaldehyde (10 min) and then permeabilized with 0.1% PBS-Triton X-100 for 15 min. The cells were then incubated in 1x PBS / 10% normal goat serum to block non-specific protein-protein interactions followed by the antibody (ab223920, 1/500 dilution) for 30 min at 22°C.

Isotype control antibody (black line) was Rabbit IgG (monoclonal) FITC (**ab223339**) used at the same concentration and conditions as the primary antibody. Unlabelled sample (blue line) was also used as a control.

Acquisition of >5,000 events were collected using a 50 mW Blue laser (488nm) and 530/30 bandpass filter.

This antibody gave a positive signal in SV40LT-SMC cells fixed with 80% methanol (5 min)/permeabilized with 0.1% PBS-Triton X-100 for 15 min used under the same conditions.

Why choose a recombinant antibody?

**Research with confidence**  
Consistent and reproducible results

**Long-term and scalable supply**  
Recombinant technology

**Success from the first experiment**  
Confirmed specificity

**Ethical standards compliant**  
Animal-free production

FITC Anti-alpha smooth muscle Actin (acetyl E3) + ACTG2 (acetyl E3) antibody [E184] (ab223920)

**Please note:** All products are "FOR RESEARCH USE ONLY. NOT FOR USE IN DIAGNOSTIC PROCEDURES"

### Our Abpromise to you: Quality guaranteed and expert technical support

- Replacement or refund for products not performing as stated on the datasheet
- Valid for 12 months from date of delivery
- Response to your inquiry within 24 hours
- We provide support in Chinese, English, French, German, Japanese and Spanish
- Extensive multi-media technical resources to help you
- We investigate all quality concerns to ensure our products perform to the highest standards

If the product does not perform as described on this datasheet, we will offer a refund or replacement. For full details of the Abpromise,

please visit <https://www.abcam.com/abpromise> or contact our technical team.

#### **Terms and conditions**

---

- Guarantee only valid for products bought direct from Abcam or one of our authorized distributors