

Product datasheet

Anti-FITC antibody [F4/1] ab112511

[3 References](#) [3 Images](#)

Overview

Product name	Anti-FITC antibody [F4/1]
Description	Mouse monoclonal [F4/1] to FITC
Host species	Mouse
Tested applications	Suitable for: IP, IHC-Fr, Flow Cyt
Species reactivity	Reacts with: Species independent
Immunogen	FITC conjugated to KLH
General notes	<p>The Life Science industry has been in the grips of a reproducibility crisis for a number of years. Abcam is leading the way in addressing this with our range of recombinant monoclonal antibodies and knockout edited cell lines for gold-standard validation. Please check that this product meets your needs before purchasing.</p> <p>If you have any questions, special requirements or concerns, please send us an inquiry and/or contact our Support team ahead of purchase. Recommended alternatives for this product can be found below, along with publications, customer reviews and Q&As</p>

Properties

Form	Liquid
Storage instructions	Shipped at 4°C. Upon delivery aliquot and store at -20°C. Avoid freeze / thaw cycles.
Storage buffer	Preservative: 0.02% Sodium azide Constituent: 99% PBS
Purity	Protein G purified
Purification notes	Purified from tissue culture supernatant
Clonality	Monoclonal
Clone number	F4/1
Myeloma	Sp2/0-Ag14
Isotype	IgG1
Light chain type	kappa

Applications

The Abpromise guarantee

Our **Abpromise guarantee** covers the use of ab112511 in the following tested applications.

The application notes include recommended starting dilutions; optimal dilutions/concentrations should be determined by the end user.

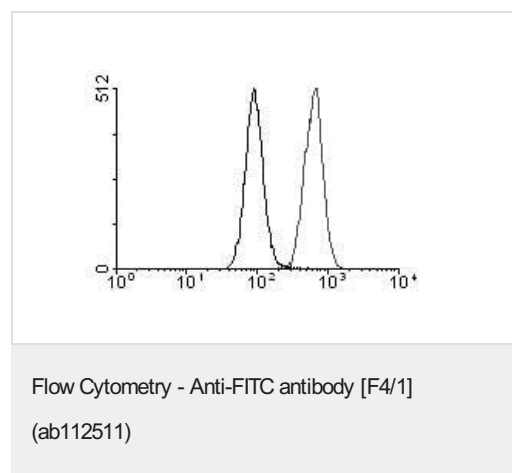
Application	Abreviews	Notes
IP		Use at an assay dependent concentration.
IHC-Fr		Use at an assay dependent concentration. acetone-fixed
Flow Cyt		Use at an assay dependent concentration. ab170190 - Mouse monoclonal IgG1, is suitable for use as an isotype control with this antibody.

Target

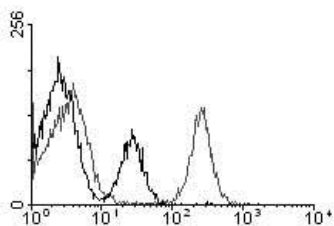
Relevance

FITC (fluorescein isothiocyanate) is a fluorochrome dye that absorbs ultraviolet or blue light causing molecules to become excited and emit a visible yellow-green light. This emission ceases upon removal of the light causing the excitation. Fluorochrome labeling provides rapid, accurate localization of antigen-antibody interaction when one of the reactants is part of a cell, tissue or other biological structure. FITC is a commonly used marker for antibodies in immunofluorescent techniques since the conjugation of FITC to proteins is relatively easy and does not, in general, destroy the biological activity of the labeled protein. FITC is widely used as a hapten to label different proteins.

Images

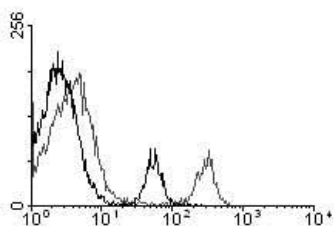


Fluorescence quenching of FITC-labelled CD45 antibody using ab112511 at 10 µg/ml. Control IgG1



Flow Cytometry - Anti-FITC antibody [F4/1]
(ab112511)

Fluorescence quenching of FITC-labelled B220 antibody using
ab112511 at 10 µg/ml. Control IgG1



Flow Cytometry - Anti-FITC antibody [F4/1]
(ab112511)

Fluorescence quenching of FITC-labelled CD8 antibody using
ab112511 at 10 µg/ml. Control IgG1

Please note: All products are "FOR RESEARCH USE ONLY. NOT FOR USE IN DIAGNOSTIC PROCEDURES"

Our Abpromise to you: Quality guaranteed and expert technical support

- Replacement or refund for products not performing as stated on the datasheet
- Valid for 12 months from date of delivery
- Response to your inquiry within 24 hours
- We provide support in Chinese, English, French, German, Japanese and Spanish
- Extensive multi-media technical resources to help you
- We investigate all quality concerns to ensure our products perform to the highest standards

If the product does not perform as described on this datasheet, we will offer a refund or replacement. For full details of the Abpromise, please visit <https://www.abcam.com/abpromise> or contact our technical team.

Terms and conditions

- Guarantee only valid for products bought direct from Abcam or one of our authorized distributors