



## Product datasheet

# FITC Anti-Carbonic Anhydrase 12/CA12 antibody [11] ab275576

[1 Image](#)

### Overview

<b>Product name</b>	FITC Anti-Carbonic Anhydrase 12/CA12 antibody [11]
<b>Description</b>	FITC Mouse monoclonal [11] to Carbonic Anhydrase 12/CA12
<b>Host species</b>	Mouse
<b>Conjugation</b>	FITC. Ex: 493nm, Em: 528nm
<b>Tested applications</b>	<b>Suitable for:</b> Flow Cyt
<b>Species reactivity</b>	<b>Reacts with:</b> Human
<b>Immunogen</b>	Recombinant fragment (His-tag) corresponding to Human Carbonic Anhydrase 12/CA12 aa 1-300 (extracellular). Database link: <a href="#">O43570</a>
	<div>  <a href="#">Run BLAST with</a> </div> <div>  <a href="#">Run BLAST with</a> </div>
<b>Positive control</b>	Flow Cyt: MCF7 cells.
<b>General notes</b>	<p>The Life Science industry has been in the grips of a reproducibility crisis for a number of years. Abcam is leading the way in addressing this with our range of recombinant monoclonal antibodies and knockout edited cell lines for gold-standard validation. Please check that this product meets your needs before purchasing.</p> <p>If you have any questions, special requirements or concerns, please send us an inquiry and/or contact our Support team ahead of purchase. Recommended alternatives for this product can be found below, along with publications, customer reviews and Q&amp;As</p>

### Properties

<b>Form</b>	Liquid
<b>Storage instructions</b>	Shipped at 4°C. Store at +4°C. Do Not Freeze. Store In the Dark.
<b>Storage buffer</b>	Preservative: 0.09% Sodium azide Constituent: 0.5% BSA
<b>Purity</b>	Protein A purified
<b>Clonality</b>	Monoclonal
<b>Clone number</b>	11
<b>Isotype</b>	IgG1

## Applications

### The Abpromise guarantee

Our **Abpromise guarantee** covers the use of ab275576 in the following tested applications.

The application notes include recommended starting dilutions; optimal dilutions/concentrations should be determined by the end user.

Application	Abreviews	Notes
Flow Cyt		Use at an assay dependent concentration. 5 µl/Test

## Target

### Function

Reversible hydration of carbon dioxide.

### Tissue specificity

Highly expressed in colon, kidney, prostate, intestine and activated lymphocytes. Expressed at much higher levels in the renal cell cancers than in surrounding normal kidney tissue. Moderately expressed in pancreas, ovary and testis.

### Involvement in disease

Defects in CA12 are the cause of hyperchlorhidrosis isolated (HCHLH) [MIM:143860]. HCHLH is a disorder characterized by excessive sweating and increased sweat chloride levels. Affected individuals suffer from episodes of hyponatremic dehydration and report increased amounts of visible salt precipitates in sweat.

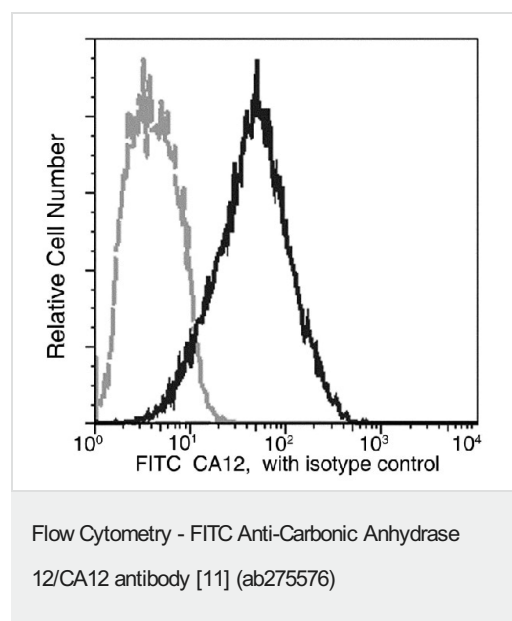
### Sequence similarities

Belongs to the alpha-carbonic anhydrase family.

### Cellular localization

Membrane.

## Images



Flow cytometric analysis of Carbonic Anhydrase 12/CA12 on MCF7 (Human breast adenocarcinoma cell line) cells using ab275576 at 5 µl/Test.

**Please note:** All products are "FOR RESEARCH USE ONLY. NOT FOR USE IN DIAGNOSTIC PROCEDURES"

### **Our Abpromise to you: Quality guaranteed and expert technical support**

---

- Replacement or refund for products not performing as stated on the datasheet
- Valid for 12 months from date of delivery
- Response to your inquiry within 24 hours
  
- We provide support in Chinese, English, French, German, Japanese and Spanish
- Extensive multi-media technical resources to help you
- We investigate all quality concerns to ensure our products perform to the highest standards

If the product does not perform as described on this datasheet, we will offer a refund or replacement. For full details of the Abpromise, please visit <https://www.abcam.com/abpromise> or contact our technical team.

### **Terms and conditions**

---

- Guarantee only valid for products bought direct from Abcam or one of our authorized distributors