

FITC Anti-CD103 antibody [2E7] ab24938

[1 References](#) [1 Image](#)

Overview

Product name	FITC Anti-CD103 antibody [2E7]
Description	FITC Armenian hamster monoclonal [2E7] to CD103
Host species	Armenian hamster
Conjugation	FITC. Ex: 493nm, Em: 528nm
Specificity	ab24938 recognises the CD103 complex (115 and 160 kDa subunits).
Tested applications	Suitable for: Flow Cyt
Species reactivity	Reacts with: Mouse
Immunogen	Tissue, cells or virus corresponding to Mouse CD103. C57BL/6J mouse intestinal intraepithelial lymphocytes (IEL)
Positive control	Flow Cyt: Mouse mesenteric lymph node cells.
General notes	<p>The Life Science industry has been in the grips of a reproducibility crisis for a number of years. Abcam is leading the way in addressing this with our range of recombinant monoclonal antibodies and knockout edited cell lines for gold-standard validation. Please check that this product meets your needs before purchasing.</p> <p>If you have any questions, special requirements or concerns, please send us an inquiry and/or contact our Support team ahead of purchase. Recommended alternatives for this product can be found below, along with publications, customer reviews and Q&As</p>

Properties

Form	Liquid
Storage instructions	Shipped at 4°C. Store at +4°C. Store In the Dark.
Storage buffer	pH: 7.4 Preservative: 0.1% Sodium azide Constituent: PBS
Purity	Affinity purified
Clonality	Monoclonal
Clone number	2E7
Isotype	IgG

Applications

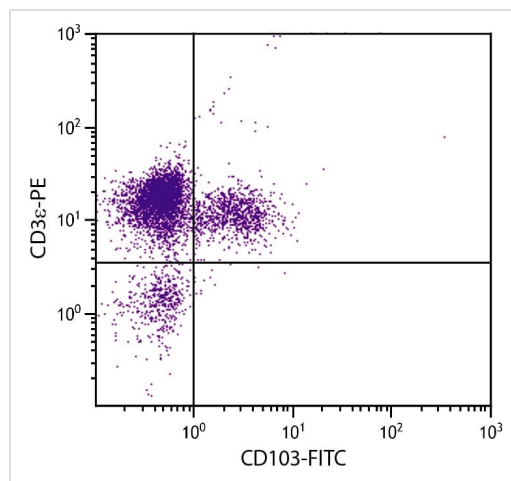
The Abpromise guarantee Our **Abpromise guarantee** covers the use of ab24938 in the following tested applications. The application notes include recommended starting dilutions; optimal dilutions/concentrations should be determined by the end user.

Application	Abreviews	Notes
Flow Cyt		Use at an assay dependent concentration.

Target

Function	Integrin alpha-E/beta-7 is a receptor for E-cadherin. It mediates adhesion of intra-epithelial T-lymphocytes to epithelial cell monolayers.
Tissue specificity	Expressed on a subclass of T-lymphocytes known as intra-epithelial lymphocytes which are located between mucosal epithelial cells.
Sequence similarities	Belongs to the integrin alpha chain family. Contains 7 FG-GAP repeats. Contains 1 VWFA domain.
Domain	The integrin I-domain (insert) is a VWFA domain. Integrins with I-domains do not undergo protease cleavage.
Cellular localization	Membrane.

Images



Flow Cytometry - FITC Anti-CD103 antibody [2E7]
(ab24938)

Mouse mesenteric lymph node cells were costained using CD103-FITC and CD3ε-PE to distinguish cell subpopulations. Cells were incubated with anti-CD103 antibody [2E7] (FITC) (ab24938) at 1 µg/10⁶ cells.

Please note: All products are "FOR RESEARCH USE ONLY. NOT FOR USE IN DIAGNOSTIC PROCEDURES"

Our Abpromise to you: Quality guaranteed and expert technical support

- Replacement or refund for products not performing as stated on the datasheet
- Valid for 12 months from date of delivery
- Response to your inquiry within 24 hours

- We provide support in Chinese, English, French, German, Japanese and Spanish
- Extensive multi-media technical resources to help you
- We investigate all quality concerns to ensure our products perform to the highest standards

If the product does not perform as described on this datasheet, we will offer a refund or replacement. For full details of the Abpromise, please visit <https://www.abcam.com/abpromise> or contact our technical team.

Terms and conditions

- Guarantee only valid for products bought direct from Abcam or one of our authorized distributors