


Product datasheet

FITC Anti-CD11b antibody [ICRF44] ab269333

2 Images

Overview

Product name	FITC Anti-CD11b antibody [ICRF44]
Description	FITC Mouse monoclonal [ICRF44] to CD11b
Host species	Mouse
Conjugation	FITC. Ex: 493nm, Em: 528nm
Tested applications	Suitable for: Flow Cyt
Species reactivity	Reacts with: Human Predicted to work with: Non human primates 
Immunogen	Tissue, cells or virus corresponding to Human CD11b. Rheumatoid synovial cells and human monocytes.
Positive control	Flow cyt: Human peripheral whole blood.
General notes	<p>The Life Science industry has been in the grips of a reproducibility crisis for a number of years. Abcam is leading the way in addressing this with our range of recombinant monoclonal antibodies and knockout edited cell lines for gold-standard validation. Please check that this product meets your needs before purchasing.</p> <p>If you have any questions, special requirements or concerns, please send us an inquiry and/or contact our Support team ahead of purchase. Recommended alternatives for this product can be found below, along with publications, customer reviews and Q&As</p>

Properties

Form	Liquid
Storage instructions	Shipped at 4°C. Store at +4°C. Store In the Dark.
Storage buffer	pH: 7.4 Preservative: 0.1% Sodium azide Constituent: PBS
Purity	Size exclusion
Purification notes	The purified antibody is conjugated with fluorescein isothiocyanate (FITC) under optimum conditions. The conjugate is purified by size-exclusion chromatography.
Clonality	Monoclonal
Clone number	ICRF44

Isotype

IgG1

Applications

The Abpromise guarantee

Our **Abpromise guarantee** covers the use of ab269333 in the following tested applications.

The application notes include recommended starting dilutions; optimal dilutions/concentrations should be determined by the end user.

Application	Abreviews	Notes
Flow Cyt		Use 4µl for 10 ⁶ cells. Or 100 µL of whole blood.

Target

Function

Integrin alpha-M/beta-2 is implicated in various adhesive interactions of monocytes, macrophages and granulocytes as well as in mediating the uptake of complement-coated particles. It is identical with CR-3, the receptor for the iC3b fragment of the third complement component. It probably recognizes the R-G-D peptide in C3b. Integrin alpha-M/beta-2 is also a receptor for fibrinogen, factor X and ICAM1. It recognizes P1 and P2 peptides of fibrinogen gamma chain.

Tissue specificity

Predominantly expressed in monocytes and granulocytes.

Involvement in disease

Genetic variations in ITGAM has been associated with susceptibility to systemic lupus erythematosus type 6 (SLEB6) [MIM:609939]. Systemic lupus erythematosus (SLE) is a chronic, inflammatory and often febrile multisystemic disorder of connective tissue. It affects principally the skin, joints, kidneys and serosal membranes. It is thought to represent a failure of the regulatory mechanisms of the autoimmune system.

Sequence similarities

Belongs to the integrin alpha chain family.
Contains 7 FG-GAP repeats.
Contains 1 VWFA domain.

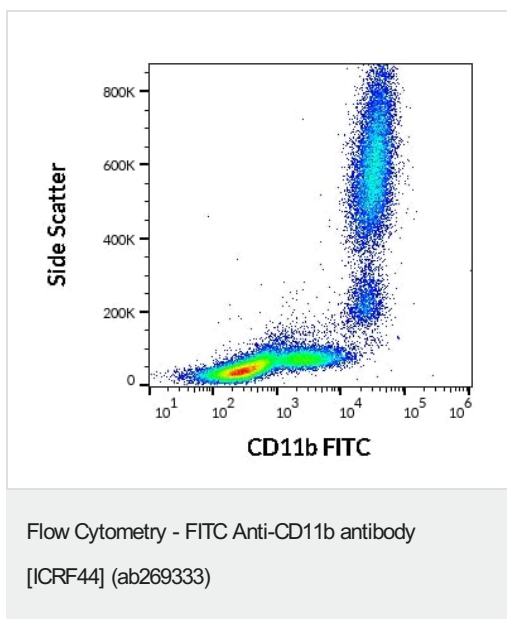
Domain

The integrin I-domain (insert) is a VWFA domain. Integrins with I-domains do not undergo protease cleavage.

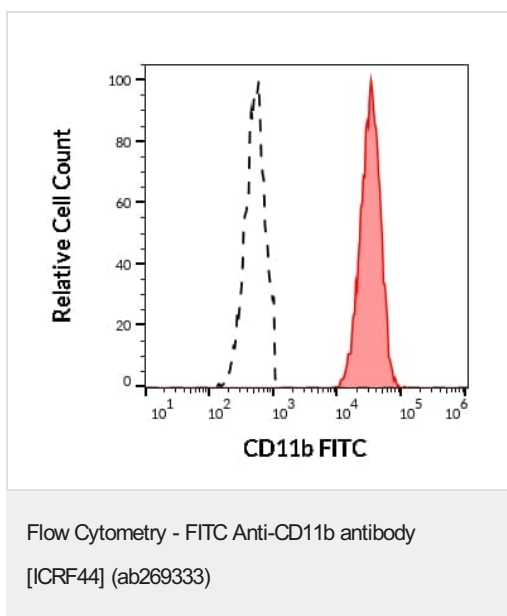
Cellular localization

Membrane.

Images



Flow cytometry surface staining pattern of human peripheral whole blood labeling CD11b with ab269333.



Separation of human neutrophil granulocytes (red-filled) from CD11b negative lymphocytes (black-dashed) in flow cytometry analysis (surface staining) of human peripheral whole blood stained using ab269333 (4µl reagent / 100 µl of peripheral whole blood).

Please note: All products are "FOR RESEARCH USE ONLY. NOT FOR USE IN DIAGNOSTIC PROCEDURES"

Our Abpromise to you: Quality guaranteed and expert technical support

- Replacement or refund for products not performing as stated on the datasheet
- Valid for 12 months from date of delivery
- Response to your inquiry within 24 hours
- We provide support in Chinese, English, French, German, Japanese and Spanish
- Extensive multi-media technical resources to help you
- We investigate all quality concerns to ensure our products perform to the highest standards

If the product does not perform as described on this datasheet, we will offer a refund or replacement. For full details of the Abpromise, please visit <https://www.abcam.com/abpromise> or contact our technical team.

Terms and conditions

- Guarantee only valid for products bought direct from Abcam or one of our authorized distributors