


## Product datasheet

### FITC Anti-CD11b antibody [M1/70] ab24874

★★★★★ [3 Abreviews](#) [14 References](#) [1 Image](#)

#### Overview

<b>Product name</b>	FITC Anti-CD11b antibody [M1/70]
<b>Description</b>	FITC Rat monoclonal [M1/70] to CD11b
<b>Host species</b>	Rat
<b>Conjugation</b>	FITC. Ex: 493nm, Em: 528nm
<b>Specificity</b>	Alpha M subunit (Mr 170 kDa) of the CD11b/CD18 heterodimer.
<b>Tested applications</b>	<b>Suitable for:</b> Flow Cyt
<b>Species reactivity</b>	<b>Reacts with:</b> Mouse <b>Predicted to work with:</b> Human 
<b>Immunogen</b>	Tissue/ cell preparation (Mouse): C57BL/10 mouse splenic T cells and concanavaline A-activated C57BL/10 splenocytes.
<b>Positive control</b>	Flow Cyt: Mouse C57BL/6 bone marrow cells.
<b>General notes</b>	<p>The Life Science industry has been in the grips of a reproducibility crisis for a number of years. Abcam is leading the way in addressing this with our range of recombinant monoclonal antibodies and knockout edited cell lines for gold-standard validation. Please check that this product meets your needs before purchasing.</p> <p>If you have any questions, special requirements or concerns, please send us an inquiry and/or contact our Support team ahead of purchase. Recommended alternatives for this product can be found below, along with publications, customer reviews and Q&amp;As</p>

#### Properties

<b>Form</b>	Liquid
<b>Storage instructions</b>	Shipped at 4°C. Store at +4°C. Do Not Freeze. Store undiluted.
<b>Storage buffer</b>	<p>pH: 7.20</p> <p>Preservative: 0.09% Sodium azide</p> <p>Constituents: 0.14% Monobasic dihydrogen sodium phosphate, 0.87% Sodium chloride, 0.1% Gelatin</p>
<b>Purity</b>	Affinity purified
<b>Clonality</b>	Monoclonal
<b>Clone number</b>	M1/70

Isotype	IgG2b
Light chain type	kappa

## Applications

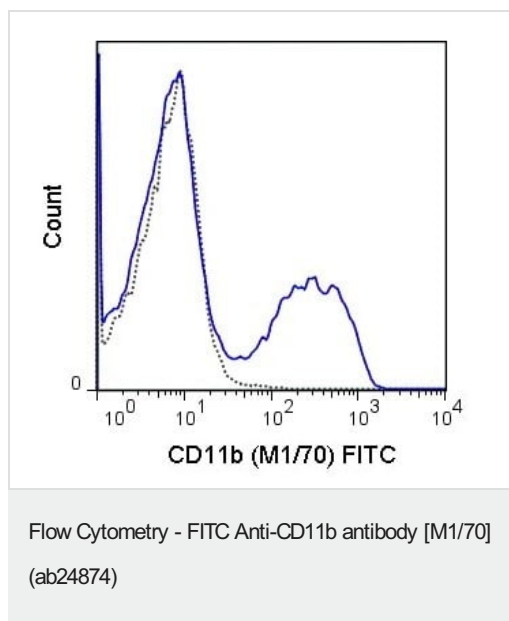
**The Abpromise guarantee** Our **Abpromise guarantee** covers the use of ab24874 in the following tested applications. The application notes include recommended starting dilutions; optimal dilutions/concentrations should be determined by the end user.

Application	Abreviews	Notes
Flow Cyt	★★★★★ (1)	Use at an assay dependent concentration. <b>ab136125</b> - Rat monoclonal IgG2b, is suitable for use as an isotype control with this antibody.

## Target

<b>Function</b>	Integrin alpha-M/beta-2 is implicated in various adhesive interactions of monocytes, macrophages and granulocytes as well as in mediating the uptake of complement-coated particles. It is identical with CR-3, the receptor for the iC3b fragment of the third complement component. It probably recognizes the R-G-D peptide in C3b. Integrin alpha-M/beta-2 is also a receptor for fibrinogen, factor X and ICAM1. It recognizes P1 and P2 peptides of fibrinogen gamma chain.
<b>Tissue specificity</b>	Predominantly expressed in monocytes and granulocytes.
<b>Involvement in disease</b>	Genetic variations in ITGAM has been associated with susceptibility to systemic lupus erythematosus type 6 (SLEB6) [MIM:609939]. Systemic lupus erythematosus (SLE) is a chronic, inflammatory and often febrile multisystemic disorder of connective tissue. It affects principally the skin, joints, kidneys and serosal membranes. It is thought to represent a failure of the regulatory mechanisms of the autoimmune system.
<b>Sequence similarities</b>	Belongs to the integrin alpha chain family. Contains 7 FG-GAP repeats. Contains 1 VWFA domain.
<b>Domain</b>	The integrin I-domain (insert) is a VWFA domain. Integrins with I-domains do not undergo protease cleavage.
<b>Cellular localization</b>	Membrane.

## Images



Flow Cytometry analysis of Mouse C57BL/6 bone marrow cells labeling CD11b with ab24874 at 0.5µg (solid line), Rat IgG2b (FITC) isotype control (dashed line) at 0.5µg concentration.

**Please note:** All products are "FOR RESEARCH USE ONLY. NOT FOR USE IN DIAGNOSTIC PROCEDURES"

### Our Abpromise to you: Quality guaranteed and expert technical support

- Replacement or refund for products not performing as stated on the datasheet
- Valid for 12 months from date of delivery
- Response to your inquiry within 24 hours
- We provide support in Chinese, English, French, German, Japanese and Spanish
- Extensive multi-media technical resources to help you
- We investigate all quality concerns to ensure our products perform to the highest standards

If the product does not perform as described on this datasheet, we will offer a refund or replacement. For full details of the Abpromise, please visit <https://www.abcam.com/abpromise> or contact our technical team.

### Terms and conditions

- Guarantee only valid for products bought direct from Abcam or one of our authorized distributors