

FITC Anti-CD16 antibody [KD1] ab124042

[3 References](#) [1 Image](#)

Overview

Product name	FITC Anti-CD16 antibody [KD1]
Description	FITC Mouse monoclonal [KD1] to CD16
Host species	Mouse
Conjugation	FITC. Ex: 493nm, Em: 528nm
Specificity	A number of studies have demonstrated the clone KD1 can be used to identify CD16 in a range of species including bovine and ovine. ab124042 reacts weakly with Horse and Pig.
Tested applications	Suitable for: Flow Cyt
Species reactivity	Reacts with: Human Does not react with: Rat, Dog
Immunogen	Tissue, cells or virus corresponding to Human CD16. A polyclonal population of NK cells.
Positive control	Human peripheral blood lymphocytes
General notes	<p>The Life Science industry has been in the grips of a reproducibility crisis for a number of years. Abcam is leading the way in addressing this with our range of recombinant monoclonal antibodies and knockout edited cell lines for gold-standard validation. Please check that this product meets your needs before purchasing.</p> <p>If you have any questions, special requirements or concerns, please send us an inquiry and/or contact our Support team ahead of purchase. Recommended alternatives for this product can be found below, along with publications, customer reviews and Q&As</p>

Properties

Form	Liquid
Storage instructions	Shipped at 4°C. Store at +4°C.
Storage buffer	Preservative: 0.09% Sodium azide Constituents: 98% PBS, 1% BSA
Purity	Protein G purified
Purification notes	ab124042 was prepared by affinity chromatography on Protein G from tissue culture supernatant.
Clonality	Monoclonal
Clone number	KD1

Applications

The Abpromise guarantee

Our **Abpromise guarantee** covers the use of ab124042 in the following tested applications.

The application notes include recommended starting dilutions; optimal dilutions/concentrations should be determined by the end user.

Application	Abreviews	Notes
Flow Cyt		Use 10µl for 10 ⁶ cells. ab91362 - Mouse monoclonal IgG2a, is suitable for use as an isotype control with this antibody.

Target

Function

Receptor for the Fc region of IgG. Binds complexed or aggregated IgG and also monomeric IgG. Mediates antibody-dependent cellular cytotoxicity (ADCC) and other antibody-dependent responses, such as phagocytosis.

Tissue specificity

Expressed on natural killer cells, macrophages, subpopulation of T-cells, immature thymocytes and placental trophoblasts.

Sequence similarities

Contains 2 Ig-like C2-type (immunoglobulin-like) domains.

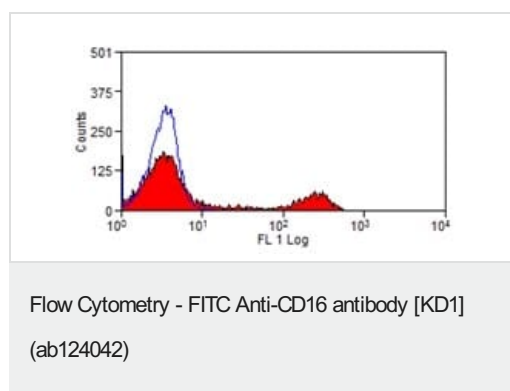
Post-translational modifications

Glycosylated. Contains high mannose- and complex-type oligosaccharides. The soluble form is produced by a proteolytic cleavage.

Cellular localization

Cell membrane. Secreted. Exists also as a soluble receptor.

Images



ab124042, undiluted, staining CD16 in Human peripheral blood lymphocytes by Flow cytometry.

Please note: All products are "FOR RESEARCH USE ONLY. NOT FOR USE IN DIAGNOSTIC PROCEDURES"

Our Abpromise to you: Quality guaranteed and expert technical support

- Replacement or refund for products not performing as stated on the datasheet

- Valid for 12 months from date of delivery
- Response to your inquiry within 24 hours
- We provide support in Chinese, English, French, German, Japanese and Spanish
- Extensive multi-media technical resources to help you
- We investigate all quality concerns to ensure our products perform to the highest standards

If the product does not perform as described on this datasheet, we will offer a refund or replacement. For full details of the Abpromise, please visit <https://www.abcam.com/abpromise> or contact our technical team.

Terms and conditions

- Guarantee only valid for products bought direct from Abcam or one of our authorized distributors