


FITC Anti-CD161 antibody [HP-3G10] ab210285

[1 Image](#)

Overview

Product name	FITC Anti-CD161 antibody [HP-3G10]
Description	FITC Mouse monoclonal [HP-3G10] to CD161
Host species	Mouse
Conjugation	FITC. Ex: 493nm, Em: 528nm
Tested applications	Suitable for: Flow Cyt
Species reactivity	Reacts with: Human Predicted to work with: Chimpanzee, Baboon, Rhesus monkey 
Immunogen	The details of the immunogen for this antibody are not available.
Positive control	Human peripheral blood lymphocytes.
General notes	<p>The Life Science industry has been in the grips of a reproducibility crisis for a number of years. Abcam is leading the way in addressing this with our range of recombinant monoclonal antibodies and knockout edited cell lines for gold-standard validation. Please check that this product meets your needs before purchasing.</p> <p>If you have any questions, special requirements or concerns, please send us an inquiry and/or contact our Support team ahead of purchase. Recommended alternatives for this product can be found below, along with publications, customer reviews and Q&As</p>

Properties

Form	Liquid
Storage instructions	Shipped at 4°C. Store at +4°C. Store In the Dark.
Storage buffer	pH: 7.20 Preservative: 0.09% Sodium azide Constituents: 0.87% Sodium chloride, 0.1% Gelatin, 0.12% Monobasic dihydrogen sodium phosphate
Purity	Protein G purified
Purification notes	ab210285 was purified from tissue culture supernatant via affinity chromatography. The purified antibody was conjugated under optimal conditions, with unreacted dye removed from the preparation.
Clonality	Monoclonal

Clone number	HP-3G10
Isotype	IgG1
Light chain type	kappa

Applications

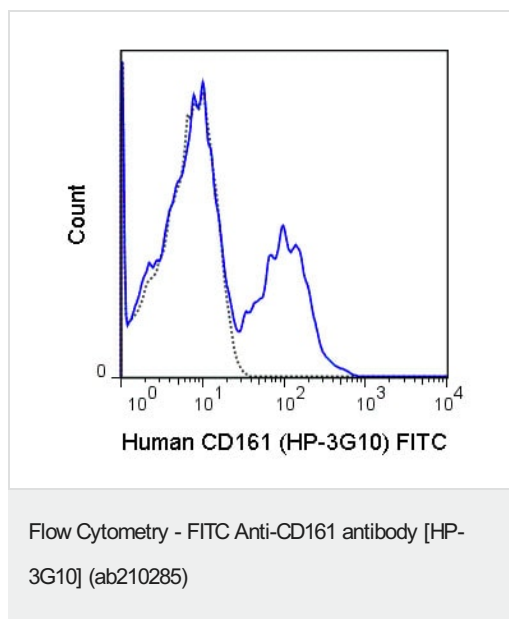
The Abpromise guarantee Our **Abpromise guarantee** covers the use of ab210285 in the following tested applications. The application notes include recommended starting dilutions; optimal dilutions/concentrations should be determined by the end user.

Application	Abreviews	Notes
Flow Cyt		Use 5µl for 10 ⁵⁻⁸ cells. The antibody has been diluted for use at 5 µl (0.5 µg) per test, defined as the amount of antibody that will stain a cell sample in a final volume of approximately 100 µl.

Target

Function	Plays an inhibitory role on natural killer (NK) cells cytotoxicity. Activation results in specific acid sphingomyelinase/SMPD1 stimulation with subsequent marked elevation of intracellular ceramide. Activation also leads to AKT1/PKB and RPS6KA1/RSK1 kinases stimulation as well as markedly enhanced T-cell proliferation induced by anti-CD3. Acts as a lectin that binds to the terminal carbohydrate Gal-alpha(1,3)Gal epitope as well as to the N-acetyllactosamine epitope. Binds also to CLEC2D/LLT1 as a ligand and inhibits NK cell-mediated cytotoxicity as well as interferon-gamma secretion in target cells.
Tissue specificity	Expressed in a subset of NK cells predominantly in intestinal epithelium and liver. Detected in peripheral blood T-cells and preferentially in adult T-cells with a memory antigenic phenotype.
Sequence similarities	Contains 1 C-type lectin domain.
Post-translational modifications	N-glycosylated. Contains sialic acid residues.
Cellular localization	Membrane.

Images



Flow cytometric analysis of Human peripheral blood lymphocytes labeling CD161 with 5 μ l (0.5 μ g) ab210285 (solid line), compared with 0.5 μ g of FITC Mouse IgG1 isotype control (dashed line).

Please note: All products are "FOR RESEARCH USE ONLY. NOT FOR USE IN DIAGNOSTIC PROCEDURES"

Our Abpromise to you: Quality guaranteed and expert technical support

- Replacement or refund for products not performing as stated on the datasheet
- Valid for 12 months from date of delivery
- Response to your inquiry within 24 hours
- We provide support in Chinese, English, French, German, Japanese and Spanish
- Extensive multi-media technical resources to help you
- We investigate all quality concerns to ensure our products perform to the highest standards

If the product does not perform as described on this datasheet, we will offer a refund or replacement. For full details of the Abpromise, please visit <https://www.abcam.com/abpromise> or contact our technical team.

Terms and conditions

- Guarantee only valid for products bought direct from Abcam or one of our authorized distributors