

# FITC Anti-CD1a antibody [NA1/34-HLK] ab27992

[1 References](#) [1 Image](#)

### Overview

<b>Product name</b>	FITC Anti-CD1a antibody [NA1/34-HLK]
<b>Description</b>	FITC Mouse monoclonal [NA1/34-HLK] to CD1a
<b>Host species</b>	Mouse
<b>Conjugation</b>	FITC. Ex: 493nm, Em: 528nm
<b>Tested applications</b>	<b>Suitable for:</b> Flow Cyt
<b>Species reactivity</b>	<b>Reacts with:</b> Human, Cynomolgus monkey
<b>Immunogen</b>	Tissue, cells or virus corresponding to Human CD1a. Human thymocytes
<b>Positive control</b>	MOLT4 cells
<b>General notes</b>	<p>The Life Science industry has been in the grips of a reproducibility crisis for a number of years. Abcam is leading the way in addressing this with our range of recombinant monoclonal antibodies and knockout edited cell lines for gold-standard validation. Please check that this product meets your needs before purchasing.</p> <p>If you have any questions, special requirements or concerns, please send us an inquiry and/or contact our Support team ahead of purchase. Recommended alternatives for this product can be found below, along with publications, customer reviews and Q&amp;As</p>

### Properties

<b>Form</b>	Liquid
<b>Storage instructions</b>	Shipped at 4°C. Store at +4°C.
<b>Storage buffer</b>	<p>pH: 7.40</p> <p>Preservative: 0.09% Sodium azide</p> <p>Constituents: PBS, 1% BSA</p>
<b>Purity</b>	Protein G purified
<b>Clonality</b>	Monoclonal
<b>Clone number</b>	NA1/34-HLK
<b>Myeloma</b>	NS1/1-Ag4-1
<b>Isotype</b>	IgG2a

## Applications

### The Abpromise guarantee

Our **Abpromise guarantee** covers the use of ab27992 in the following tested applications.

The application notes include recommended starting dilutions; optimal dilutions/concentrations should be determined by the end user.

Application	Abreviews	Notes
Flow Cyt		

### Application notes

Flow Cyt: Use 10µl of the suggested working dilution (neat - 1/10) for  $10^6$  cells in 100µl.

Not yet tested in other applications.

Optimal dilutions/concentrations should be determined by the end user.

## Target

### Function

Antigen-presenting protein that binds self and non-self lipid and glycolipid antigens and presents them to T-cell receptors on natural killer T-cells.

### Tissue specificity

Expressed on cortical thymocytes, epidermal Langerhans cells, dendritic cells, on certain T-cell leukemias, and in various other tissues.

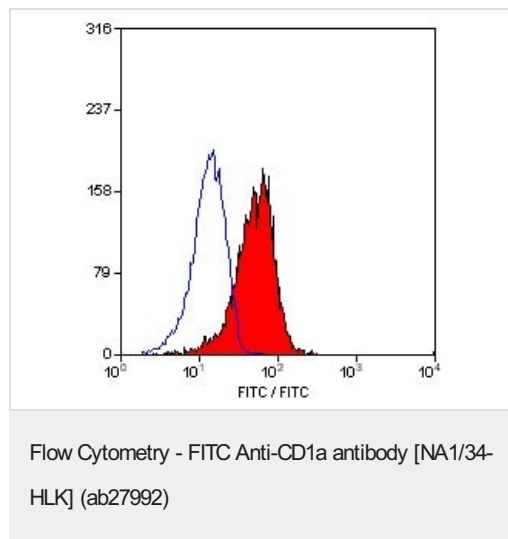
### Sequence similarities

Contains 1 Ig-like (immunoglobulin-like) domain.

### Cellular localization

Cell membrane. Endosome membrane. Subject to intracellular trafficking between the cell membrane and endosomes. Localizes to cell surface lipid rafts.

## Images



FACS analysis of CD1a expression in MOLT4 cells using FITC conjugated ab27992 at 10µl for  $10^6$  cells in 100µl.

**Please note:** All products are "FOR RESEARCH USE ONLY. NOT FOR USE IN DIAGNOSTIC PROCEDURES"

## Our Abpromise to you: Quality guaranteed and expert technical support

- Replacement or refund for products not performing as stated on the datasheet

- Valid for 12 months from date of delivery
- Response to your inquiry within 24 hours
- We provide support in Chinese, English, French, German, Japanese and Spanish
- Extensive multi-media technical resources to help you
- We investigate all quality concerns to ensure our products perform to the highest standards

If the product does not perform as described on this datasheet, we will offer a refund or replacement. For full details of the Abpromise, please visit <https://www.abcam.com/abpromise> or contact our technical team.

#### **Terms and conditions**

---

- Guarantee only valid for products bought direct from Abcam or one of our authorized distributors