

## Product datasheet

# FITC Anti-CD2 antibody [LT2] ab27995

[2 References](#) [1 Image](#)

### Overview

---

<b>Product name</b>	FITC Anti-CD2 antibody [LT2]
<b>Description</b>	FITC Mouse monoclonal [LT2] to CD2
<b>Host species</b>	Mouse
<b>Conjugation</b>	FITC. Ex: 493nm, Em: 528nm
<b>Specificity</b>	ab27995 recognises CD2 expressed by T cells, NK cells and thymocytes.
<b>Tested applications</b>	<b>Suitable for:</b> Flow Cyt
<b>Species reactivity</b>	<b>Reacts with:</b> Human
<b>Immunogen</b>	Tissue, cells or virus corresponding to Human CD2. Normal human peripheral blood lymphocytes.
<b>General notes</b>	<p>ab27995 inhibits NK cell mediated cytotoxicity, and ConA and PHA mediated blast transformation.</p> <p>The Life Science industry has been in the grips of a reproducibility crisis for a number of years. Abcam is leading the way in addressing this with our range of recombinant monoclonal antibodies and knockout edited cell lines for gold-standard validation. Please check that this product meets your needs before purchasing.</p> <p>If you have any questions, special requirements or concerns, please send us an inquiry and/or contact our Support team ahead of purchase. Recommended alternatives for this product can be found below, along with publications, customer reviews and Q&amp;As</p>

### Properties

---

<b>Form</b>	Liquid
<b>Storage instructions</b>	Shipped at 4°C. Store at +4°C.
<b>Storage buffer</b>	pH: 7.40 Preservative: 0.09% Sodium azide Constituents: PBS, 1% BSA
<b>Purity</b>	Protein A purified
<b>Primary antibody notes</b>	ab27995 inhibits NK cell mediated cytotoxicity, and ConA and PHA mediated blast transformation.
<b>Clonality</b>	Monoclonal

<b>Clone number</b>	LT2
<b>Myeloma</b>	x63-Ag8.653
<b>Isotype</b>	IgG2b

## Applications

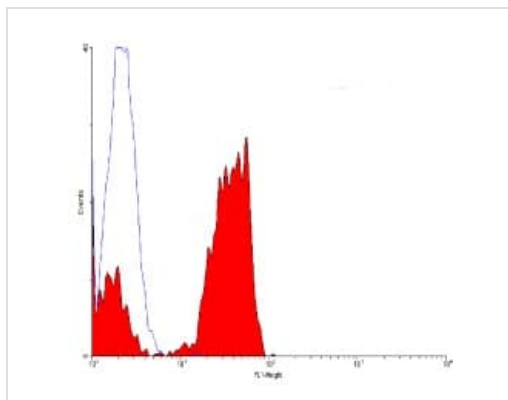
**The Abpromise guarantee** Our **Abpromise guarantee** covers the use of ab27995 in the following tested applications. The application notes include recommended starting dilutions; optimal dilutions/concentrations should be determined by the end user.

Application	Abreviews	Notes
Flow Cyt		Use 10µl for 10 <sup>6</sup> cells. Use 10µl for 10 <sup>6</sup> cells, or 100µl of whole blood.

## Target

<b>Function</b>	CD2 interacts with lymphocyte function-associated antigen (LFA-3) and CD48/BCM1 to mediate adhesion between T-cells and other cell types. CD2 is implicated in the triggering of T-cells, the cytoplasmic domain is implicated in the signaling function.
<b>Sequence similarities</b>	Contains 1 Ig-like C2-type (immunoglobulin-like) domain. Contains 1 Ig-like V-type (immunoglobulin-like) domain.
<b>Cellular localization</b>	Membrane.

## Images



FACS analysis of CD2 expression in human lymphocytes using FITC conjugated ab27995 at 10µl for 10<sup>6</sup> cells.

Flow Cytometry - FITC Anti-CD2 antibody [LT2]  
(ab27995)

**Please note:** All products are "FOR RESEARCH USE ONLY. NOT FOR USE IN DIAGNOSTIC PROCEDURES"

## **Our Abpromise to you: Quality guaranteed and expert technical support**

---

- Replacement or refund for products not performing as stated on the datasheet
- Valid for 12 months from date of delivery
- Response to your inquiry within 24 hours
  
- We provide support in Chinese, English, French, German, Japanese and Spanish
- Extensive multi-media technical resources to help you
- We investigate all quality concerns to ensure our products perform to the highest standards

If the product does not perform as described on this datasheet, we will offer a refund or replacement. For full details of the Abpromise, please visit <https://www.abcam.com/abpromise> or contact our technical team.

## **Terms and conditions**

---

- Guarantee only valid for products bought direct from Abcam or one of our authorized distributors