

## Product datasheet

### FITC Anti-CD226 antibody [DX11] ab33335

[1 References](#) [1 Image](#)

#### Overview

---

<b>Product name</b>	FITC Anti-CD226 antibody [DX11]
<b>Description</b>	FITC Mouse monoclonal [DX11] to CD226
<b>Host species</b>	Mouse
<b>Conjugation</b>	FITC. Ex: 493nm, Em: 528nm
<b>Tested applications</b>	<b>Suitable for:</b> Flow Cyt
<b>Species reactivity</b>	<b>Reacts with:</b> Human
<b>Immunogen</b>	Tissue, cells or virus corresponding to Human CD226. Human cytotoxic T lymphocyte clone.
<b>Positive control</b>	Human peripheral blood lymphocytes.
<b>General notes</b>	<p>Clone DX11 is reported to inhibit T and NK cell mediated cytotoxicity against tumour cell targets and to block TNF alpha and IFN gamma secretion by alloantigen specific T cells.</p> <p>The Life Science industry has been in the grips of a reproducibility crisis for a number of years. Abcam is leading the way in addressing this with our range of recombinant monoclonal antibodies and knockout edited cell lines for gold-standard validation. Please check that this product meets your needs before purchasing.</p> <p>If you have any questions, special requirements or concerns, please send us an inquiry and/or contact our Support team ahead of purchase. Recommended alternatives for this product can be found below, along with publications, customer reviews and Q&amp;As</p>

#### Properties

---

<b>Form</b>	Liquid
<b>Storage instructions</b>	Shipped at 4°C. Store at +4°C.
<b>Storage buffer</b>	pH: 7.40 Preservative: 0.09% Sodium azide Constituents: PBS, 1% BSA
<b>Purity</b>	Protein G purified
<b>Purification notes</b>	This antibody was purified from tissue culture supernatant.
<b>Primary antibody notes</b>	Clone DX11 is reported to inhibit T and NK cell mediated cytotoxicity against tumour cell targets and to block TNF alpha and IFN gamma secretion by alloantigen specific T cells.

<b>Clonality</b>	Monoclonal
<b>Clone number</b>	DX11
<b>Myeloma</b>	Sp2/0
<b>Isotype</b>	IgG1

## Applications

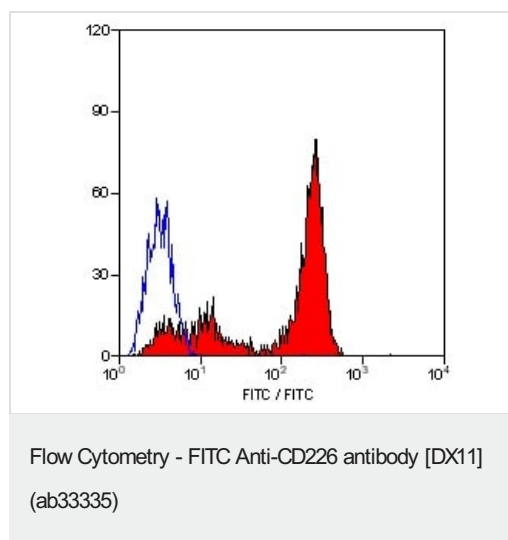
**The Abpromise guarantee** Our **Abpromise guarantee** covers the use of ab33335 in the following tested applications. The application notes include recommended starting dilutions; optimal dilutions/concentrations should be determined by the end user.

Application	Abreviews	Notes
Flow Cyt		1/10 - 1/20. Use 10µl of the suggested working dilution to label 10 <sup>6</sup> cells in 100µl.

## Target

<b>Function</b>	Receptor involved in intercellular adhesion, lymphocyte signaling, cytotoxicity and lymphokine secretion mediated by cytotoxic T-lymphocyte (CTL) and NK cell.
<b>Tissue specificity</b>	Expressed by peripheral blood T-lymphocytes.
<b>Sequence similarities</b>	Contains 2 Ig-like C2-type (immunoglobulin-like) domains.
<b>Cellular localization</b>	Membrane.

## Images



Ab33335, at a dilution of 10µl for labeling 10<sup>6</sup> cells in 100µl, staining CD226 in human peripheral blood lymphocytes by Flow Cytometry.

## **Our Abpromise to you: Quality guaranteed and expert technical support**

---

- Replacement or refund for products not performing as stated on the datasheet
- Valid for 12 months from date of delivery
- Response to your inquiry within 24 hours
  
- We provide support in Chinese, English, French, German, Japanese and Spanish
- Extensive multi-media technical resources to help you
- We investigate all quality concerns to ensure our products perform to the highest standards

If the product does not perform as described on this datasheet, we will offer a refund or replacement. For full details of the Abpromise, please visit <https://www.abcam.com/abpromise> or contact our technical team.

## **Terms and conditions**

---

- Guarantee only valid for products bought direct from Abcam or one of our authorized distributors