


### FITC Anti-CD28 antibody [CD28.2] ab134472

1 Image

#### Overview

<b>Product name</b>	FITC Anti-CD28 antibody [CD28.2]
<b>Description</b>	FITC Mouse monoclonal [CD28.2] to CD28
<b>Host species</b>	Mouse
<b>Conjugation</b>	FITC. Ex: 493nm, Em: 528nm
<b>Tested applications</b>	<b>Suitable for:</b> Flow Cyt
<b>Species reactivity</b>	<b>Reacts with:</b> Human <b>Predicted to work with:</b> Chimpanzee, Baboon, Cynomolgus monkey, Rhesus monkey 
<b>Immunogen</b>	DC28.1.3.3 hybridoma cells.
<b>General notes</b>	<p>The Life Science industry has been in the grips of a reproducibility crisis for a number of years. Abcam is leading the way in addressing this with our range of recombinant monoclonal antibodies and knockout edited cell lines for gold-standard validation. Please check that this product meets your needs before purchasing.</p> <p>If you have any questions, special requirements or concerns, please send us an inquiry and/or contact our Support team ahead of purchase. Recommended alternatives for this product can be found below, along with publications, customer reviews and Q&amp;As</p>

#### Properties

<b>Form</b>	Liquid
<b>Storage instructions</b>	Shipped at 4°C. Store at +4°C. Do Not Freeze. Store undiluted.
<b>Storage buffer</b>	<p>pH: 7.20</p> <p>Preservative: 0.09% Sodium azide</p> <p>Constituents: 0.14% Monobasic dihydrogen sodium phosphate, 0.87% Sodium chloride, 0.1% Gelatin</p>
<b>Purity</b>	Affinity purified
<b>Clonality</b>	Monoclonal
<b>Clone number</b>	CD28.2
<b>Isotype</b>	IgG1

#### Applications

## Applications

### The Abpromise guarantee

Our **Abpromise guarantee** covers the use of ab134472 in the following tested applications.

The application notes include recommended starting dilutions; optimal dilutions/concentrations should be determined by the end user.

Application	Abreviews	Notes
Flow Cyt		Use at an assay dependent concentration. <b>ab91356</b> - Mouse monoclonal IgG1, is suitable for use as an isotype control with this antibody.

## Target

### Function

Involved in T-cell activation, the induction of cell proliferation and cytokine production and promotion of T-cell survival.

### Tissue specificity

Expressed in T-cells and plasma cells, but not in less mature B-cells.

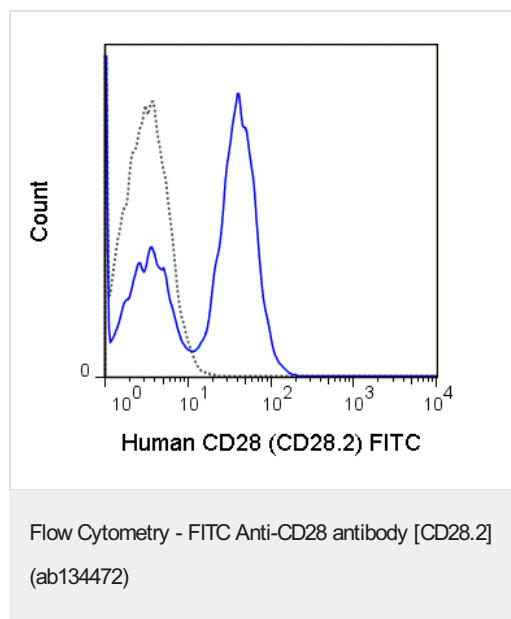
### Sequence similarities

Contains 1 Ig-like V-type (immunoglobulin-like) domain.

### Cellular localization

Membrane.

## Images



Flow Cytometry analysis of human peripheral blood

lymphocytes labeling CD28 with ab134472 at  $0.5 \mu\text{g}$  (solid line) or Mouse IgG1 (FITC) isotype control at  $0.5 \mu\text{g}$  (dashed line).

**Please note:** All products are "FOR RESEARCH USE ONLY. NOT FOR USE IN DIAGNOSTIC PROCEDURES"

## Our Abpromise to you: Quality guaranteed and expert technical support

- Replacement or refund for products not performing as stated on the datasheet
- Valid for 12 months from date of delivery
- Response to your inquiry within 24 hours

- We provide support in Chinese, English, French, German, Japanese and Spanish
- Extensive multi-media technical resources to help you
- We investigate all quality concerns to ensure our products perform to the highest standards

If the product does not perform as described on this datasheet, we will offer a refund or replacement. For full details of the Abpromise, please visit <https://www.abcam.com/abpromise> or contact our technical team.

#### **Terms and conditions**

---

- Guarantee only valid for products bought direct from Abcam or one of our authorized distributors