

Product datasheet

FITC Anti-CD28 antibody [PV-1] ab24844

[1 Image](#)

Overview

Product name	FITC Anti-CD28 antibody [PV-1]
Description	FITC Armenian hamster monoclonal [PV-1] to CD28
Host species	Armenian hamster
Conjugation	FITC. Ex: 493nm, Em: 528nm
Tested applications	Suitable for: Flow Cyt
Species reactivity	Reacts with: Mouse, Human
Immunogen	Tissue, cells or virus corresponding to Mouse CD28. C57BL/6N mouse T cell lymphoma EL4 cell line
General notes	<p>The Life Science industry has been in the grips of a reproducibility crisis for a number of years. Abcam is leading the way in addressing this with our range of recombinant monoclonal antibodies and knockout edited cell lines for gold-standard validation. Please check that this product meets your needs before purchasing.</p> <p>If you have any questions, special requirements or concerns, please send us an inquiry and/or contact our Support team ahead of purchase. Recommended alternatives for this product can be found below, along with publications, customer reviews and Q&As</p>

Properties

Form	Liquid
Storage instructions	Shipped at 4°C. Store at +4°C. Store In the Dark.
Storage buffer	<p>pH: 7.4</p> <p>Preservative: 0.1% Sodium azide</p> <p>Constituent: PBS</p>
Purity	Affinity purified
Clonality	Monoclonal
Clone number	PV-1
Isotype	IgG

Applications

The Abpromise guarantee

Our **Abpromise guarantee** covers the use of ab24844 in the following tested applications.

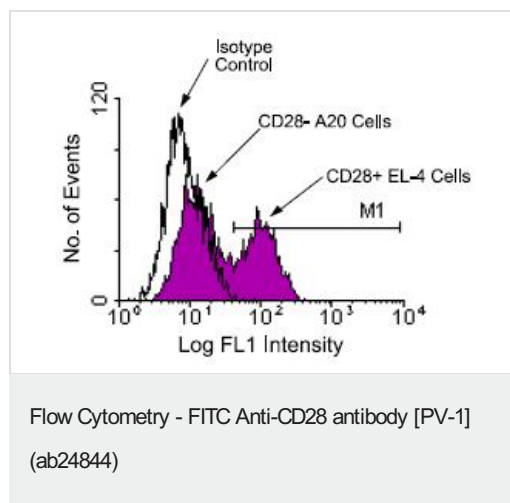
The application notes include recommended starting dilutions; optimal dilutions/concentrations should be determined by the end user.

Application	Abreviews	Notes
Flow Cyt		Use 3µg for 10 ⁶ cells. ab18473 - Armenian Hamster monoclonal IgG, is suitable for use as an isotype control with this antibody.

Target

Function	Involved in T-cell activation, the induction of cell proliferation and cytokine production and promotion of T-cell survival.
Tissue specificity	Expressed in T-cells and plasma cells, but not in less mature B-cells.
Sequence similarities	Contains 1 Ig-like V-type (immunoglobulin-like) domain.
Cellular localization	Membrane.

Images



ab24844 at a concentration of 3 µg/10⁶ cells staining human A 20 (B cell lymphoma cells) and EL-4 cells by flow cytometry. A 50:50 mixture of the A20 B-cell lymphoma and the EL-4 T-cell lymphoma was stained with ab24844. Large cells were gated and analyzed by flow cytometry.

Please note: All products are "FOR RESEARCH USE ONLY. NOT FOR USE IN DIAGNOSTIC PROCEDURES"

Our Abpromise to you: Quality guaranteed and expert technical support

- Replacement or refund for products not performing as stated on the datasheet
- Valid for 12 months from date of delivery
- Response to your inquiry within 24 hours
- We provide support in Chinese, English, French, German, Japanese and Spanish
- Extensive multi-media technical resources to help you
- We investigate all quality concerns to ensure our products perform to the highest standards

If the product does not perform as described on this datasheet, we will offer a refund or replacement. For full details of the Abpromise,

please visit <https://www.abcam.com/abpromise> or contact our technical team.

Terms and conditions

- Guarantee only valid for products bought direct from Abcam or one of our authorized distributors