


Product datasheet

FITC Anti-CD3 antibody [UCHT1] ab34275

★★★★☆ [5 Abreviews](#) [11 References](#) [3 Images](#)

Overview

Product name	FITC Anti-CD3 antibody [UCHT1]
Description	FITC Mouse monoclonal [UCHT1] to CD3
Host species	Mouse
Conjugation	FITC. Ex: 493nm, Em: 528nm
Tested applications	Suitable for: Flow Cyt
Species reactivity	Reacts with: Human Predicted to work with: Chimpanzee 
Immunogen	Tissue/ cell preparation (Human) -infant thymocytes and lymphocytes from a patient with Sezary Syndrome.
Positive control	human peripheral blood lymphocytes
General notes	<p>The Life Science industry has been in the grips of a reproducibility crisis for a number of years. Abcam is leading the way in addressing this with our range of recombinant monoclonal antibodies and knockout edited cell lines for gold-standard validation. Please check that this product meets your needs before purchasing.</p> <p>If you have any questions, special requirements or concerns, please send us an inquiry and/or contact our Support team ahead of purchase. Recommended alternatives for this product can be found below, along with publications, customer reviews and Q&As</p>

Properties

Form	Liquid
Storage instructions	Shipped at 4°C. Store at +4°C. Do Not Freeze. Store undiluted.
Storage buffer	pH: 7.20 Preservative: 0.09% Sodium azide Constituents: 0.1% Gelatin, 0.14% Monobasic dihydrogen sodium phosphate, 0.87% Sodium chloride
Purity	Affinity purified
Purification notes	Purified from tissue culture supernatant
Clonality	Monoclonal
Clone number	UCHT1

Myeloma

P3-NS1/1-Ag4-1

Isotype

IgG1

Applications

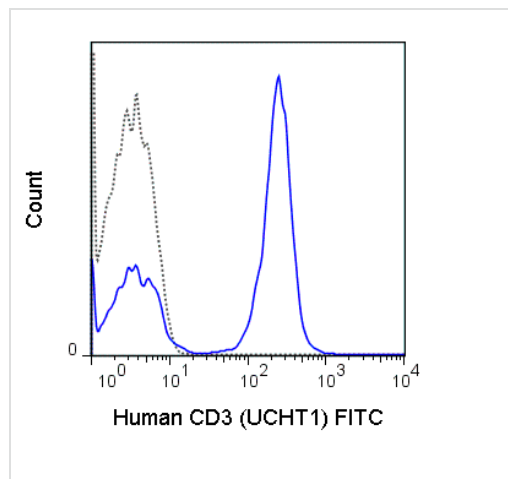
The Abpromise guarantee

Our **Abpromise guarantee** covers the use of ab34275 in the following tested applications.

The application notes include recommended starting dilutions; optimal dilutions/concentrations should be determined by the end user.

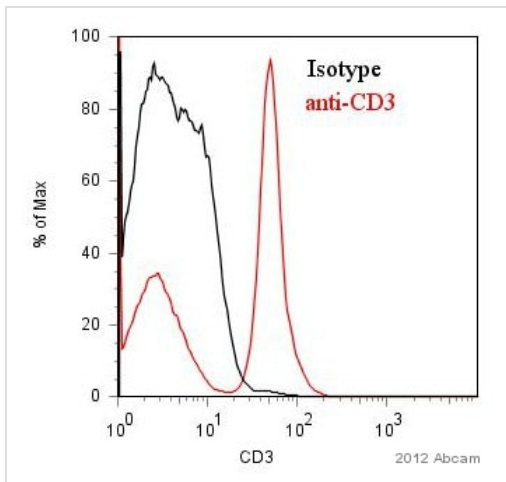
Application	Abreviews	Notes
Flow Cyt	★★★★☆ (5)	Use at an assay dependent concentration. ab91356 - Mouse monoclonal IgG1, is suitable for use as an isotype control with this antibody.

Images



Flow Cytometry analysis of Human peripheral blood lymphocytes staining CD3 with ab34275 at 5 μ L (1.0 μ g) concentration (solid line), and isotype control Mouse IgG1 (FITC) at 1.0 μ g (dotted line).

Flow Cytometry - FITC Anti-CD3 antibody [UCHT1]
(ab34275)

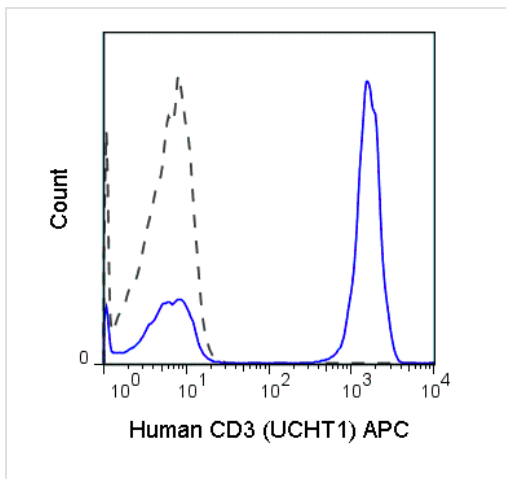


Flow Cytometry - FITC Anti-CD3 antibody [UCHT1]
(ab34275)

This image is courtesy of an anonymous Abreview

ab34275 staining CD3 in Human PBMCs by Flow Cytometry. PBMCs were isolated from buffy coat after Ficoll preparation in PBS + 1% BSA and 0.01% sodium azide. The sample was incubated with the primary antibody (1/100 in PBS + 1% BSA and 0.01% sodium azide) for 1 hour at 4°C.

Gating Strategy: Live Lymphocytes.



Flow Cytometry - FITC Anti-CD3 antibody [UCHT1]
(ab34275)

FACS analysis of CD3 expression in human peripheral blood lymphocytes stained with ab34275 (solid line) at 0.25 ug and 0.25 ug isotype control (dashed line).

Please note: All products are "FOR RESEARCH USE ONLY. NOT FOR USE IN DIAGNOSTIC PROCEDURES"

Our Abpromise to you: Quality guaranteed and expert technical support

- Replacement or refund for products not performing as stated on the datasheet
- Valid for 12 months from date of delivery
- Response to your inquiry within 24 hours
- We provide support in Chinese, English, French, German, Japanese and Spanish
- Extensive multi-media technical resources to help you
- We investigate all quality concerns to ensure our products perform to the highest standards

If the product does not perform as described on this datasheet, we will offer a refund or replacement. For full details of the Abpromise, please visit <https://www.abcam.com/abpromise> or contact our technical team.

Terms and conditions

- Guarantee only valid for products bought direct from Abcam or one of our authorized distributors